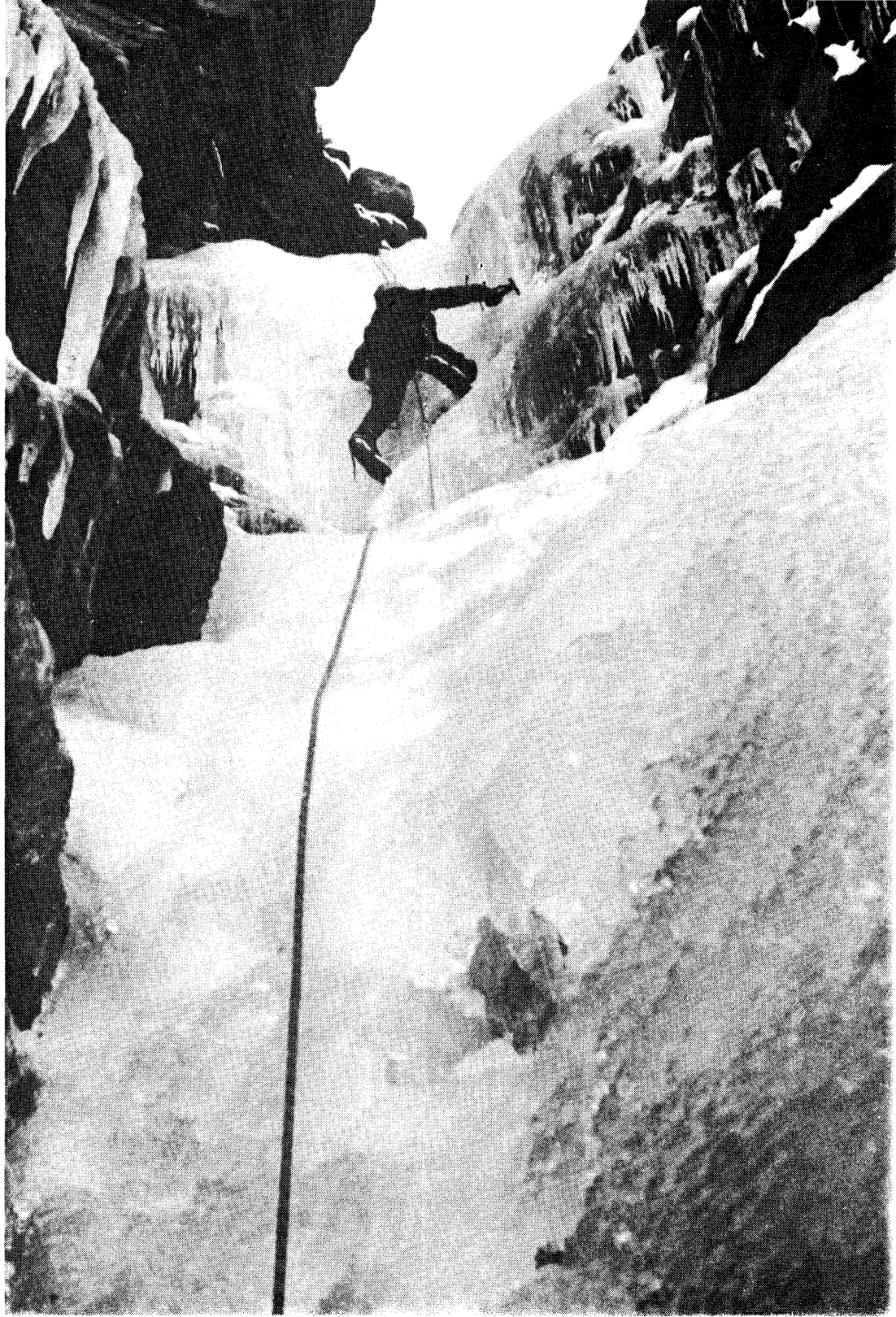


ARIZONA MOUNTAINEER

JANUARY 2000

Susan Morris makes short work of pitch two, rated WI 4, of Campground Couloir near Durango, Colorado last November. Photo by Eric Filsinger



THE ARIZONA MOUNTAINEERING CLUB

MEETINGS: The AMC meets the 4th Mon. of each month (Nov. and Dec. meetings are usually the 3rd Mon.) at 7:00 pm at:

Los Olivos Senior Center
2802 E. Devonshire Ave.
Phoenix, Az.

(28th St. just north of Indian School Rd.)

BOARD MEETINGS: Board meetings are open to all members and are held two Mondays prior to the Club meeting at Los Olivos Center.

DUES: Dues cover January through December. A single membership is \$15.00 per year; \$20.00 for a family. Those joining after June 30 pay 50% of the yearly rates. Members joining after October 31 who pay for a full year will have dues credited through the end of the following year. Dues must be given to the treasurer or sent to:

Arizona Mountaineering Club
P. O. Box. 1695
Phoenix, Az. 85001-1695

SCHOOLS: The AMC conducts several rock climbing, mountaineering and other outdoor skills schools each year. Contact the Training & Safety Committee for schedules and costs.

FOR MORE INFORMATION:

Call (623) 878-2485

email info@AzMountaineeringClub.org

Web www.AzMountaineeringClub.org

BOARD OF DIRECTORS:

President	Sue Goins	480-821-0535
Vice-President	Tim Medlock	480-807-4920
Secretary	Penny Medlock	480-807-4920
Treasurer	Alisa Reinhardt	623-825-1415
Director-1yr	Sherrie Holbrook	602-564-6683
Director-1yr	Frank Vers	480-947-9435
Director-1yr	Don Thomas	480-892-9513
Director-2yr	Jeff Nagel	602-721-1968
Director-2yr	Scott Hoffman	623-580-8909

COMMITTEES:

Access	Wayne Schroeter	623-878-3914
Classification	Tim Medlock	480-807-4920
Conservation	Charlene Todd	480-917-5354
Elections	Don Thomas	480-892-9513
Equip Rental	Paul Norberg	602-808-9244
Email	Penny Medlock	480-807-4920
Co-Librarian	Mark Fleming	480-423-5064
Co-Librarian	Ingrid McCarthy	480-423-5064
Membership	Rogil Schroeter	623-878-3914
Mntneering	Erik Filsinger	480-314-1089
Mntneering	Dan Bolin	480-948-5630
Newsletter	Wally Vegors	602-246-9341
NL Distribution	Lisa Wolf	480-831-7565
Outings	Sally Borg	602-788-3552
Co-Programs	Lisa Barnes	623-931-6721
Co-Programs	Donna Forst	602-866-2877
Public Relations	Kim Huenecke	602 569-0790
Trail Maint.	Jutta Ulrich	602-234-3579
Training; Safety	Wayne Schroeter	623-878-3914
T-shirts	Jeff Nagel	480-968-2020
WebSite	Jim Sumrall	480-966-4525

THE AMC ACCESS COMMITTEE: The Committee works by itself and with the national Access Fund to maintain public access to climbing areas. If you know of areas that are threatened with closures or climbing restrictions, please notify the Access Committee Chair, Wayne Schroeter, at 878-3914, or wshroeter@sprintmail.com.

THE ACCESS FUND: This is a national, non-profit, climber's organization that works to maintain access to climbing areas nationwide. Climbers can join The Access Fund by mailing an annual, tax-deductible donation of any amount to: The Access Fund, P.O. Box 17010, Boulder, CO 80308, or giving it to the AMC Club Treasurer to be sent to The Access Fund in your name. A donation of \$15 or more is needed to receive Access Notes, The Access Fund newsletter.

THIS MONTH IN THE AMC

IN THIS ISSUE

- 1.....Index, Club Info.; Birthdays this month
- 2.....Board Meeting Report; Newbies
- 3.....Discounts, Treasurer's Report, Equipment
- 4.....Mia Axon Show in January
- 5.....Access Issues
- 6.....J-Tree Report; Banff Films Here Again
- 7.....Supes Climb; Pinnacle Peak Trail Work
- 8.....Outing Leaders Committees; Emergency
.....Medical Class Offered Again
- 9.....Phoenix Bouldering Lives; AARS Class
- 10....Proposed Y2K Budget; Millennial Moon
- 11....Billboard; Lost and Found
- 12....Outing Calendar; Leaders

NOT STUFF!!!

Take Heart—

Rock Is Y2K Compliant!

**Pinnacle Peak trail
work
Saturday, Jan 8**

AMC NEWSLETTER

The *Arizona Mountaineer* is published monthly by the AMC. Items for publication, subject to approval, should be sent to the editor at the AMC P. O. Box. Cover photos and other mountaineering photos are welcome (please submit prints). Climb write-ups ARE welcome. For info call the editor at 602-246-9341. Address e-mail to vegors@worldnet.att.net. Advertising in the *Arizona Mountaineer* is accepted, subject to approval, at the following rates:
Personal ads: free to members.

Business ads: \$5.00 for business card; \$10.00 for half page; \$20.00 for full page \$25.00 for inserts/mo

February Deadline: 18 January 2000

AMC LIBRARY

You must be an AMC member; i. e., your name must be on the most current membership list.

The circulation period is 1 month. Materials are due at the next general club meeting. The overdue fine is \$2 per title per month. Please contact the librarian if you are unable to return your books and tapes.

The circulation limit is three titles per person. One of these may be a videotape, for which a \$50 deposit is required. Each guidebook requires a \$25 deposit.

AMC JANUARY BIRTHDAYS

Patty Warren 3, Patrick Gavin 4, Matt Greenman 4, Alisa Reinhardt 5, Bill Stinson 5, Cathy Wise 5, Lisa Barnes 6, Bill Fallon 6, Susan Zulch 6, Stephen Ashbrook 10, Jack Carlson 10, Donald Rubin 10, Bob Zimering 10, Emily Theobald 11, Rich Kocher 18, Mick Strole 18, Jared Gilmore 20, John Glass 20, Baldev Sangha 22, John Lyons 25, Rich Landers 26, Janel Razook 26, Kevin Ryan 30, Carol Chan 31, Dave Eckles 31, Mark Foisy 31, Aki Pickens 31

MINUTES OF THE AMC BOARD MEETING: 12/06/99

BOARD MEMBERS PRESENT: Sue Goins, Penny Medlock, Jeff Nagel, Sherrie Holbrook, Frank Vers, Don Thomas, Scott Hoffman

COMMITTEE MEMBERS PRESENT: Jutta Ulrich, Erik Filsinger, Wally Vegors, Wayne Schroeter, Kim Huenecke, Mick Strole

MEMBERS PRESENT: Bill Stinson, Ted Gartner, Michael Nevels, Fred Padgett

Sue called the meeting to order at 7:08 p.m.

ACCESS: Wayne will have a write up for the newsletter.

CLASSIFICATION: Bill Stinson, Chris Query, and Kevin Kozup are up for leadership. The email format doesn't seem to be working out, so we will most likely go back to mailing everything.

CONSERVATION: Amy Day will be renewing the permit for our adopt a mile.

ELECTIONS: There is still an opening for someone to run for vice president. Ballots will be available to be mailed, if requested. The vote takes place at the January members meeting.

EQUIPMENT RENTAL: NR

EMAIL: Penny will talk to Jim again about having the phone numbers removed from the web site.

LIBRARY: NR

MEMBERSHIP: NR

MOUNTAINEERING: the class over Thanksgiving weekend went very well! Both upcoming classes are full but Erik is accepting names for the waiting list.

NEWSLETTER: Wally is looking for anything!!! Submit your stories, accounts of outings, pictures, etc.

OUTINGS: Mick has set up another Wilderness First Responder Class to be held Feb 25,26,27. There is a 15 person minimum and the class will cost \$130 per person.

PROGRAMS: NR

PUBLIC RELATIONS: The brochure and Access pamphlet are complete. REI club day is coming up in January. Also, Kim needs slides to borrow for a Tempe Library day presentation. She will need them by early January in order to get things together. Contact her if you have slides to lend.

TRAIL MAINTENANCE: We will be helping with Pinnacle Peak trail work. We are still considering adopting the area. Jutta will get with Sally to set a date for the trail work..

TRAINING AND SAFETY: NR

TREASURER: NR

T-SHIRTS: we gave opinions on a new shirt idea.

WEBSITE: NR

OLD BUSINESS: No old business was discussed.

NEW BUSINESS: Michael Nevels answered risk and liability related questions related to club outings, club outings leaders, classes, club equipment, etc. until approximately 8:30 PM. The meeting was adjourned at 8:56 PM

NEED A BALLOT?

If you will be unable to attend the January Annual Meeting (and if your membership is paid for 2,000) you can still vote. Call Don Thomas at 480-892-9513 to have a ballot mailed to you.

Elections take place at the January Membership Meeting on the 24th.

NEW AMC MEMBERS

Tina Bickel

Jeff Bryant

Vicki Bryant

Dave FranECKi

Micah Lauer

Curtis Storlie

Elinor Winn

Jeremy Winn

DISCOUNT DIRECTORY

The following merchants currently offer a discount to AMC members.

Arizona Climbing Center - 1911 West Cheryl Drive, Phoenix, AZ 85021, 997-4171. Show your AMC membership card and get a 10% discount at gym and shop, special orders 20%..

Arizona Hiking Shack - 11645 N. Cave Creek Rd., Phoenix, AZ 85020, 944-7723

Show your AMC membership card and get a 10% discount; special orders 15%.

Desert Mountain Sports - 2824 E. Indian School #4, Phoenix, AZ 955-2875

Show your AMC membership card and get a 10% discount - ask at DMS for further details.

AMC RENTAL EQUIPMENT:

EQUIPMENT	Lb-Oz	Qty	Cost/Wk
Tents:			
4-season 2-3 man7-6		1	10.00
4-season 2 man	6-0	1	6.00
3-season 2 man	5-0	3	5.00
4-season 1 man bivy	1-15	1	7.00
Sherpa Snowshoes		8	5.00
Ski poles (var. sizes).....		4	0.50
Crampons (sizes 6-14).....		10	2.00
In-step crampons		1	2.00
Gaitors (Goretex)		2 pr	2.00
Ice axes (70-90 cm)		12	2.00
Snow shovel	1-10	2	3.00
Snow pickets;flukes		10 @	1.00
MSR Multifuel Stove		1	3.00
Yates Big Dudes. #6, #7			5.00
Haul bag.....		1	10.00
PortaLedge		1	Call
Climbing shoes	Various sizes		Call

EQUIPMENT RENTAL GUIDELINES: Your name must be on the most current membership list. Deposit required; varies by item; generally \$20-\$50. The two-personal-checks system works best. Advance reservation suggested. If not using the reserved equipment, please call and cancel. Call Linda Locke at 602-997-4235 for shoes. For everything else, call Paul Norberg at 602-808-9244 .

TREASURER'S REPORT

Statement of Operations
01/01/99 Through 12/06/99
Category Description

Amount

INCOME	
Access Income.....	500.00
Advertising	125.00
Book Sale & fines.....	18.00
Equipment Rental.....	412.50
Fines	18.00
Interest.....	100.92
Membership Dues.....	4,153.00
Program Income.....	87.00
Rental Income	412.50
Tee Shirts.....	190.00
Training & Safety.....	12,890.50
Uncategorized	4,794.00

TOTAL INCOME 22,270.992

EXPENSES

Access	100.00
Administration	18753.10
Conservation	92.51
Equipment Maintenance.....	588.66
Library	286.76
Newsletter	3,401.63
Outings	280.00
Programs.....	4,655.92
Bank Charge	88.91
Training & Safety.....	8,290.09
Uncategorized outflows	2,708.50

TOTAL EXPENSES 22,979.08

OVERALL FOR PERIOD -708.16

ACCOUNT BALANCES

CD 8608-6895.....	4,174.89
Checking.....	.00

TOTAL ASSETS \$13,234.04

=====

Mia Axon

Climbing, Community and Conservation

Join Mia Axon as she tells her story of becoming a world-class climber.

Mia shares her tales of climbing adventures and hard routes, and talks about the commitment and focus it takes to climb 5.14.

From being a weekend warrior to climbing full-time, Mia describes how climbing has fit into her whole life, has enabled her to push her limits, and has led her into a career with the conservation community. Her descriptions of years of travel that range from desert cracks in Utah to World Cups in Russia, and the eccentric climbing community she is a part of, are full of camaraderie and laughter.

The meeting will be held on Monday, January 24, from 7:00 - 9:00 p.m. at the Los Olivos Senior Center, 2802 East Devonshire Avenue, one block north of Indian School on the east side of 28th Street.

ACCESS

On Dec. 4, I spent a beautiful, sunny Saturday driving around in vans with about 20 people who are members of either the McDowell Sonoran Preserve Commission or the Planning Committee. These groups have been charged by the Scottsdale City Council with making recommendations to the Council regarding the Preserve.

We drove up Pima and back down to Rio Verde, then east to 136th Street and up to the Little Granite Mountain access point. I pointed out all the climbers on the Loaf (Mick's conveniently scheduled outing) and pointed out the other climbing areas we use at LGM. Then we drove south on 128th Street to the future Preserve boundary and I pointed out Tom's Thumb, Sven Slab and Morrell's Wall.

The purpose of this trip was to show the members of these committees where we do our recreation, and to give them a feel for what we may need in the way of access facilities, etc. An equestrian representative accompanied us, also. A mountain biker was supposed to come along, but she apparently had previous commitments.

I also met Claire Miller, the new Preserve Coordinator. She came from the Phoenix City Parks Department, where she worked with Kathi Reichert. She will probably be taking our Basic Climbing School in October, after her knee - arthroscopically repaired - heals up.

Scottsdale City Council

Scottsdale will be holding elections in March to elect a new mayor and council. Sam Campana is not running for re-election, but current councilwoman Mary Manross is. There have been several other names mentioned in connection with the mayor's race, mostly business people in Scottsdale.

Because no one else has declared, I don't know what the preservation commitments are from any other candidate. Mary, however, has been instrumental in pushing for the Preserve. She has voted to go ahead with all Preserve purchases that have come before the City Council in the year I have been following the meetings.

I don't have a handle yet on who else may be running for re-election or vacated seats, but I should after the holidays.

- Wayne

PINNACLE PEAK TRAIL WORK

The time has come to show Scottsdale we mean business. Scott Hamilton is the Trails Coordinator for the City of Scottsdale. He has been working closely with Paul Dief to schedule trail work sessions. Paul prefers to do the cementing and filling in on Fridays with small groups to avoid giving the impression to passersby that the Park is open for use. But, we need to haul supplies to the work area.

The work on the Cactus Flower trail we did last Thanksgiving held up nicely. There is not much left to do on it. The summit trail is where we will concentrate our efforts. This involves cementing rocks into place to reduce the wear and tear on the slope itself. We need more water. We also need to haul rocks up to fill in the trail. The ones we hauled up last year were used by Estancia to repair the main trail.

We may schedule another Saturday where we can actually do some of the stabilization work. It will involve training first, possibly in the morning for an afternoon of work. The trail work will be done according to the new Scottsdale City standards, which Scott Hamilton has been working on. (Scott will probably take our Basic Climbing School in March.)

So, the time has come. **I have checked the weather forecast. Saturday, January 8, will be too cold for climbing but just right for trail work.** Trust me on this. We will reschedule the planned outing leader outing from this date. Mark your calendars. This is a good chance for us to show the city of Scottsdale how much we care about this peak.

So:

**Pinnacle Peak trail work
Saturday, Jan 8
All day, starting at 9:00 am**

Bring gloves, drinking water, lunch, empty plastic water jugs, and an old pack that can haul rocks. We got a bunch of work to do.

SO MUCH TO BE THANKFUL FOR AT JOSHUA TREE!

Every year, my co-workers come by just before they leave for their Thanksgiving holidays. "What are you doing for Thanksgiving, Charlene?", they ask. I'm sure they are anticipating some adventure – seeing as how my office is decked out in climbing calendars, photos, and posters. "Why I'm going out to Joshua Tree," I reply. They walk away shaking their heads and mumbling, "Why would anyone want to spend their holiday in the *desert*?"

The answer: ROCKS! Everywhere you look: ROCKS! Lovely rocks, just looking to chew up your finger-tips on tiny crimpers. ROCKS! Yea, ROCKS! Oh, and Joshua Trees. The Joshua Trees add such a mystical air to the *desert*. (And, as those of you who attended the Ranger Talk already know, Joshua Trees are part of the Yucca Family and are some of the first plants to flower in the spring – see, Ranger Talks can be fun AND educational!).

And so, sixty or seventy (or more?) climbers from the AMC descended on the *desert*...

... We climbed. Some of us climbed on the many top-ropes that the AMC had set up; some of us ventured off to explore more remote settings.

... We hiked. In fact a contingent of AMCs hiked all 4 days – finding new canyons and rock formations to explore. And, everyone agreed that on a hike through J-Tree, you'll see some of the most spectacular scenery around.

... We ate. The Turkey Dinner was unsurpassed! Including the "Chocolate-Raspberry Wowchawunga Dessert" (a la Jeff Nagle). Dress for the evening was "casual plaid" – of course some of us were decked out more than others (Mick).

... And we danced. Yes, that's right. The "Super-Ledge onto the Mantle" was invented right at the J-Tree bonfire; along with the accompanying glow-stick light show.

And so, thanks to everyone for fantastic climbing and great friendship! Thanks to the belayers that keep us safe. Thanks to those who work on Access issues – your work helps keep beautiful areas,

like J-Tree, open for us all to enjoy. Thanks to the outing leaders – you are the BEST – sacrificing your own climbing time to set up anchors and keep us SAFE! Thanks to Sue, Sherrie, and all the rest of you that prepared the Turkey and fixin's ahead of time.

And, after all, isn't that what Thanksgiving is all about? Even if it is in the *desert*... :-)

Charlene Todd

BANFF MOUNTAIN FILM FESTIVAL

REI is once again honored to bring back to Phoenix, the 24th annual Banff Mountain Film Festival World Tour on Friday, March 17 from 6:30 to 10:00pm at the Arizona Science Center's IMAX Theater. You don't want to miss this charity event of the world's top awarded mountain, cultural and extreme films.

November of '99 the Banff Mountain Film Festival viewed over 300 films and videos from around the world. The World Tour brings to you the winning films from every category.

Besides the films, there will be local authors and publishers as well as local wilderness groups (including AMC), the Phoenix Zoo exhibiting animals that are seen in some of the films, a cash bar, food and lots of free door prizes.

You can purchase your tickets at either the Paradise Valley or Tempe REI stores starting February 1st. Tickets are limited to 300 seats so don't wait! The cost for the festival is \$20.00 for REI and Phoenix Zoo members and \$25.00 for non-members. All profits will be going to the Phoenix Zoo's Night Camp Program for kids. Help make a difference in a child's life.

FLATIRON AU'NATURAL

The Superstition Mountains have always been a great source of adventure and the range's massive western escarpment an attractive focal point in which to thrust ones energy. Several years ago I moved to East Mesa and the "Supes" filled my living room window. Daily the "Flatiron" seduced me.

For those unfamiliar, the Flatiron is the most recognized landmark on the western escarpment. It looks like the bow of a large ship and sits below the summit. It has a band of whitish colored rock running horizontally across its midsection. When viewed from the south, the top appears very flat and it got its name because it resembles an upside down clothes iron, a 500-foot tall iron.

Flatiron is a popular destination for hikers who follow a trail out of Lost Dutchman State Park, called the Siphon Draw trail, to its summit.

My first attempt at climbing its sheer face was to repeat the two climbs documented in the now out of print "Phoenix Rock" guidebook. Extremely weak rock and a love of life thwarted these efforts.

What I learned from these initial forays was that the rock on the north facing aspect (climber's left) was much cleaner and harder than that on the south side. I spied a natural line just to the climber's left of the prow. With the help of Perry Teeters, we established a well-protected, 5.10c, 450-foot, four-pitch route that we named "Field of Dreams." Back then, before the bolting ban, we used bolts liberally to protect the transitions between natural gear placements as well as crux sections.

Almost nine years has elapsed since that first ascent. I've enjoyed going back, annually, to repeat it but since the bolting ban I have harbored a feeling of disappointment. Disappointed that future adventures of pioneering new routes weren't going to happen.

Eventually, after staring at the north side long enough, I visually linked up three crack systems that I thought might go without fixed gear. To be sure I rappelled the route and top-roped it in sections. The intended line was about 260 feet long and closer to the ascent gully than the prow.

Now, I am excited to report a new all natural route that Manny Rangel and I established in April 1999. We named the route "Sidewinder" and rated it 5.10. Most of the climbing is in a long clean dihedral with a 5.8 hand crack.

I have made up some topos for "Sidewinder" and "Field of Dreams." I will leave them at the Arizona Hiking Shack and Desert Mountain Sports.

Even though I am excited about establishing a route without fixed gear, I am still hopeful that we, as climbers, can convince land managers not to make it illegal to place fixed gear in Wilderness areas. I hope all of you are members of the Access Fund and are actively working towards that goal. Disappointment is a terrible thing.

—Mark Trainor

PINNACLE PEAK TRAIL WORK SCHEDULE

Here's the work dates for December and January. Please let me know what days you can make. Most days we will be working at about 4 hours (come on by even if you can't stay the entire time).

What to bring: gloves, water and munchies.

Friday 12/31	9am
Friday 1/7	9am
Saturday 1/8	9am (needs lot of folks for this - rock hauling)
Friday 1/14	9am
Friday 1/21	9am
Friday 1/28	9am

Paul Dief - Access Fund - Friends of Pinnacle Peak
dief@phoenixrockgym.com
480 488-1235

OUTING LEADER'S MEETING

A meeting of about 15 outing leaders was recently held to network about common concerns encountered on outings, discuss continuing training and outing leader standards and begin a review of potential legal issues AMC faces as a volunteer organization. This is the beginning of an ongoing process of evaluating the way AMC conducts its activities and the formulation of a risk management plan. There were a number of good suggestions brought out at the meeting and the results was that three committees have been formed to put together proposals on their respective topics and report back to the full outing leader group and the board. As proposals are introduced they will be published to the full membership.

The three committees are as follows:

1. Criteria/Standards for becoming an outing leader and remaining an outing leader: Scott Hoffman, Tim Medlock and Chris Query.
2. Guidelines for outings: Rogil Schroeter, David Larimer and Jef Sloat.
3. Special guidelines for high risk outings - such as multi-pitch, wilderness, alpine and mountaineering outings: Tim Schneider, Erik Filsinger and Jeff Nagel.

As time goes along we will develop a formal risk management plan incorporating these guidelines and adding things such as an emergency evacuation plan.

It was also agreed that outing leaders need to keep their skills updated and should receive continuing training in safety, rescue, leadership, first aid and other topics. We will hold at least two outings a year designed specifically for the current outing leaders. The first one will be held in January to work on safety skills and rescuing an injured climber. Eventually some of these topics will be offered in AMC seminars to the general membership.

Any member wishing to add input can contact one of the committee members, outing leaders or board members. Your comments are valuable. After all we ARE a club of volunteer members.

WILDERNESS AID CLASS

BACK COUNTRY EMERGENCY CARE (offered by Summit Emergency Wilderness Seminars)

For those of you who took last year's 22 hour Wilderness Medical Training Class with Laurie & Bugeye, you know what a great education it was.

Bugeye being a climber himself geared the class toward climbing-related injuries. At the same time Laurie & Bugeye gave a great overview of the proper steps in handling wilderness emergencies. The class will start with the basics of first aid. The different skills build on each other. Then the class culminates with the "Grand Scenario" on Sunday which helps to evaluate hard and soft skills.

The class fee of \$130.00 is a bargain for the information learned. The class includes a wilderness emergency syllabus and a certification of completion card for a 22 hour wilderness medical training that meets the National Safety Council requirements for Level 2 first aid training and adheres to the Wilderness Medical Society's practice guidelines for wilderness emergency care. 15 hours of C.E.U.s are available for EMTs.

The class will be held on February 25, 26th & 27th. Class begins at 6 PM on Friday and goes until about 10 PM. Saturday runs 9 AM to 5 PM with an hour lunch. Sunday begins at 8 AM and ends at about 6 PM. There is a limit of 20 students and the class is expected to fill up. Due to getting burned in the past - the \$130 fee MUST be paid in full to reserve your spot, and is NOT refundable without a substitute.

Please call Mick Strole for further info or to reserve your spot (602) 788-4031

THE PHOENIX BOULDERING CONTEST NEEDS . . . YOU!

Yes, the Phoenix Bouldering Contest is alive and well and going on this year - our 17th competition! This is the world's largest natural rock bouldering competition and well known throughout the USA and foreign countries as a great time to climb, compete and party. We had over 550 contestants in 1998 plus some of the world's best on an artificial wall erected at the site at Oak Flat Camp Ground.

You know what this means! We will be looking for lots of volunteers. The competition will be held Saturday, April 15, with the rainout day being April 16. As always, we will be looking for volunteers to be officials, help with the party, security, registration, setup, teardown and lots of other tasks. After the beginning of the year I will start contacting people to commit to the weekend. Even if you decide to compete, there is plenty you can still do to help us out. This is a non-profit event run by volunteers. It requires commitment but is a lot of fun too. You meet the top climbers from all over and have a chance to see them climb.

I am also looking for a few dedicated people to head up specific jobs: registration, security and signage. You must be able to take charge of a group of volunteers, be committed to the time involved (meaning months before the contest) and have good organizational skills

If you are interested in being a PBC committee person, please contact me. I am also looking for several people to do lots of phoning to enlist volunteers. We will probably need about 150 volunteers to help on the weekend and days leading up to the contest.

You will be hearing more soon. Please contact me at (home) 480-821-0535, (work) 480-966-5227, or (email) skgoins@primenet.com.

Sue Goins

ANCHORS AND ETYMOLOGY

My idea for a lead in to this list of names has come to naught. I thought that the term "anchorite" might be appropriate in introducing the latest AARS graduates and their instructors. I confess that "anchorette" even briefly sounded usable. But 'tis not to be. The word refers to someone who goes off into the wilderness (OK so far) in order to be alone in his meditations. That spoiled it since there is nothing anti-social or reclusive about an anchors class.— *Ed*

Instructors for last Anchors school

Lynn Alexander
Michael Baker
Sally Borg
Joel Breshin
Debby Brown
Jennifer Davies
Bruce Donaldson
Bill Fallon
Daniel Gonzales
Kurt Korpong
Kevin Kozup
Tim Lange
Penny Medlock
Tim Medlock
Jeffry Nagel
PJ O'Connell
Al Potter
Chris Query
Sharon Regen
Bruce Robbins
Brad Sanders
Rogil Schroeter
Wayne Schroeter
Kathy Sharp
Bill Stinson
Mick Strole
Dave Tanton
Clay Vollmer
Mark Wachtman
Tim Ward
Gary Youngblood
Bob Zimering

Students for last Anchor school

Eric Ball
Richard Balland
Jesus Cecena
Dave Eckles
Connie Gartner
Wendy Gaynor
James Gillette
Jeff Harvey
Jeff Hatfield
Susan Hatfield
Mark Hubble
James Iverson
Gary Johnson
Perry Kearney
George Krall
Kurt Krause
Janet Krisinski
Susan Krolicki
Ronald Logan
John Lyons
Fred Padgett
Pete Petersen
Melissa Rivers
Rick Rybarczyk
Curtis Storlie
Paul Sylvia

*Group outings: The campsite, where possible, is reserved by the AMC. There is no designated leader, although there may be a leader to work with non-leaders (call to find out). Call to find car-poolers. Parking is first-come, first-served in some cases. To request outings: Call Outings Chairperson Sally Borg, 602-788-3552. To cancel: Please call the outing leader to cancel as soon as possible: there may be a waiting list. Also, the leader will know not to wait for you on outing day.

**COMMERCIALLY PROVIDED TRAINING AND SERVICES
ESPECIALLY FOR AMC MEMBERS#**

- Jan 15-17 **Beginning Ice Climbing School** including avalanche safety training. \$160. Avalanche school alone is \$50. Coord by Erik Filsinger, 480-443-2621
- Feb 19-21 **Beginning Ice Climbing School** — as above.
- Feb 25, 26, 27 - **Back Country Emergency Care** by Summit Wilderness Emergency Seminars 22 hour course, \$130. (One scholarship available) Mick Strole (602) 788-4031
- Apr 9 - May 3 **Manaslu Trek, Nepal.** Off the beaten track in Nepal. Jim Sumrall, 480-966-4525
- May 4-Jun 2 **Annapurna Circuit** (essentially) plus attempts on two 6,200m. peaks at bargain rates. Jim Sumrall, 480-966-4525.

BILLBOARD — Other Scheduled Events #

- Jan 15 **REI Club Day** 11:00 a.m. to 4:00 p.m., Tempe store at Priest and Southern.
- Feb 5 **Superstition Ridgeline Hike.** 11 miles. Moderately strenuous. Will be split into 2 parties: Faster hikers contact Bill Fallon 602-996-9790 or email to: bfallon@goodnet.com; Slower hikers contact Rogil Schroeter 623-878-3914 or email to: Rogil.Schroeter@CAS.Honeywell.com.
- Mar 17 **Banff Film Festival Road Show** Arizona Science Center 6:30-11:00. Story page 6.
- Tuesdays **North Mountain Hikes** Evening. Rogil Schroeter, 623- 878-3914
- Wednesdays **Arizona Climbing Center** - 6:00 p.m., Rogil Schroeter, 623-878-3914st

Outings listed in these sections are not AMC sanctioned outings. Any AMC member can list an event he or she is planning and which is open to other AMC members. The member does not have to be an approved AMC Outing Leader. If you wish to participate you should be physically and mentally prepared and equipped with the appropriate gear and should contact the member planning the outing. You are responsible for your own safety, not the person leading the outing. You should always be aware of the risks involved in outdoor activities and conduct yourself accordingly.

FOUND DEPARTMENT aka "THE PREZ"

One fluorescent yellow rain jacket in stuff sack. and one blue rain jacket in stuff sack from Brad Sander's Mt. Eldon outing.

Yellow Tupperware colander/strainer from Grand Canyon cleanup.

From JT: pair fingerless gloves, Corelle serving platter, foam beer can/soda can cool holder, red plastic dishpan/tub, blue oven mitt, white hand towel.

Geez! Why don't you guys leave pro behind for me? Sue Goins

Found at Joshua Tree: Blue woman's North Face long sleeve shirt. Call Rogil 623-878-3914

Lost: Yellow Motorola radio. Believed lent out for a grad climb. Please return to Wayne or Rogil Schroeter 623-878-3914.

Found Petzl head lamp. Lynn Alexander. 480-396-1055

AMC CALENDAR OF EVENTS

Participation in AMC outings requires club membership. Outings vary in degree of danger. When you participate in an outing you should be both physically and mentally prepared and equipped with the appropriate gear. You should always be aware of the risks involved in outdoor activities and conduct yourselves accordingly. The outing leader is not responsible for your safety; you are. Please contact the outing leader before going on an outing, discussing your capabilities with the outing leader. You must be over 18 years of age to participate, or must be accompanied by a parent or responsible adult, and obtain prior consent from the outing leader. Those accompanying minors are responsible for the minor's safety.

WHEN WHERE & WHAT & WHO

- Jan 9 **Magma Gardens** No Limit, Toproping. Meet at Maricopa CC parking lot at 8:00 Jeff Sloat, 602-843-2490.
- Jan 22 **Easy Quartzite Climbs** "Scorpion Ridge" between Sunflower and Payson. up to 5.8. Limit 8 climbers. Jeff Nagel, 480-968-2020.
- Jan 23 **Queen Creek** "Wherever the weather is good". Details from Brad Sanders 480-961-3674.
- Jan 24 **Mia Axon Program** AMC Regular Meeting, 7:00 p.m., Los Olivos Center
- Jan 29 **King Dome at Crown King** Beautiful granite face climbs on south facing wall. 5.9-5.10. Limit 10. David Larimer 602-604-0532
- Feb 3 **Lead School Instructor Meeting** Wayne S.
- Feb 8 **Lead School** Feb. 8, 9, 10, 12, 13. \$65 (\$50 if already a member) Rogil S. 623-878-3914.
- Mar 2 **Basic School Instructor Meeting**. Mick Strole 602-788-4031.
- Mar 7 **Basic Climbing School**. Mar. 7, 9, 11, 14, 16, 18. \$150. Rogil S. 623-878-3914.
- Mar 25 **Queen Creek Cleanup and Climb**. ¹²
- Mar 30 **Anchors School Instructors Meeting**. Tim Medlock, 480-807-4920.
- Apr 4 **Anchors School** Apr 4, 6, 8, 9. \$65 (\$50 if already a member). Rogil S. 623-878-3914.
- Apr 14-16 **Bouldering contest** near Oak Flats. (Not an official AMC outing but most of the troops will be there to compete or help as a volunteer.) More details elsewhere..
- Apr 22-23 **Glacier Travel, Crevasse Rescue Skills**. \$30. Erik Filsinger. 480-443-2621.
- Jul 25-Aug 5 **Wind Rivers BYOL Summer Camp** (???) Date firm. Plans to come
(Continued on page 11)

AMC OUTING LEADERS

Requirements for becoming a leader: take the basic, AARS and Lead classes (or equivalents), be a member for at least one year, complete a basic first aid and CPR class (8 hours or more), and be approved for leadership by at least five current leaders through formal application process. Contact Tim Medlock at (480) 807-4920.

Lisa Barnes..... 623-931-6721	Richard Horst 602-971-5738	Rogil Schroeter..... 623-878-3914
Bill Berkley 480-945-4346	David Larimer 602-604-0532	Wayne Schroeter 623-878-3914
Sally Borg..... 602-788-3552	Tim Medlock 480-807-4920	Jef Sloat 602-843-2490
Tom Conner..... temp inactive	Jeff Nagel 480-968-2020	Mick Strole 602-788-4031
Mark Donahue..... 602-866-0133	Paul Norberg 602-808-9244	Frank Vers 480-947-9435
John Ficker..... 602-867-1487	Paul Paonessa 602-493-7356	Allan Watts..... 602-866-9933
Sue Goins 480-821-0535	Brad Sanders 480-961-3674	Gary Youngblood 602-508-9696
Scott Hoffman..... 623-580-8909	Tim Schneider 480-497-8377	

January 2000

AMC Calendar of Events

Sunday	Monday	Tuesday	Wednesday	Thursday	Friday	Saturday																																																																																																	
						1																																																																																																	
2	3	4 CAMRA Meeting	5 Sunrise 7:33 Sunset 5:34	6 New Moon	7	8 Pinnacle Peak Trail Day																																																																																																	
9 Magma Gardens	10 AMC Board Meeting, Los Olivos, 7:00 p.m.	11	12 Sunrise 7:33 Sunset 5:40	13	14 Sunrise 7:00 Sunset 5:25	15 Beginning Ice; Avalan- che School																																																																																																	
16 Beginning Ice; Avalan- che School	17 Beginning Ice; Avalan- che School	18	19 Sunrise 7:31 Sunset 5:47	20 Sunrise 7:07 Sunset 5:22	21	22 Payson Road Quartzite																																																																																																	
23 Queen Creek	24 AMC Meet- ing, Mia Axon Show	25	26 Sunrise 7:28 Sunset 5:53	27	28 Last Quarter	29 King's Dome																																																																																																	
30	31	<table border="1" style="margin: auto; border-collapse: collapse;"> <tr><td colspan="7" style="text-align: center;">December 99</td></tr> <tr><td style="text-align: center;">S</td><td style="text-align: center;">M</td><td style="text-align: center;">T</td><td style="text-align: center;">W</td><td style="text-align: center;">T</td><td style="text-align: center;">F</td><td style="text-align: center;">S</td></tr> <tr><td></td><td></td><td style="text-align: center;">1</td><td style="text-align: center;">2</td><td style="text-align: center;">3</td><td style="text-align: center;">4</td><td></td></tr> <tr><td style="text-align: center;">5</td><td style="text-align: center;">6</td><td style="text-align: center;">7</td><td style="text-align: center;">8</td><td style="text-align: center;">9</td><td style="text-align: center;">10</td><td style="text-align: center;">11</td></tr> <tr><td style="text-align: center;">12</td><td style="text-align: center;">13</td><td style="text-align: center;">14</td><td style="text-align: center;">15</td><td style="text-align: center;">16</td><td style="text-align: center;">17</td><td style="text-align: center;">18</td></tr> <tr><td style="text-align: center;">19</td><td style="text-align: center;">20</td><td style="text-align: center;">21</td><td style="text-align: center;">22</td><td style="text-align: center;">23</td><td style="text-align: center;">24</td><td style="text-align: center;">25</td></tr> <tr><td style="text-align: center;">26</td><td style="text-align: center;">27</td><td style="text-align: center;">28</td><td style="text-align: center;">29</td><td style="text-align: center;">30</td><td style="text-align: center;">31</td><td></td></tr> </table>		December 99							S	M	T	W	T	F	S			1	2	3	4		5	6	7	8	9	10	11	12	13	14	15	16	17	18	19	20	21	22	23	24	25	26	27	28	29	30	31		<table border="1" style="margin: auto; border-collapse: collapse;"> <tr><td colspan="7" style="text-align: center;">February 00</td></tr> <tr><td style="text-align: center;">S</td><td style="text-align: center;">M</td><td style="text-align: center;">T</td><td style="text-align: center;">W</td><td style="text-align: center;">T</td><td style="text-align: center;">F</td><td style="text-align: center;">S</td></tr> <tr><td></td><td></td><td style="text-align: center;">1</td><td style="text-align: center;">2</td><td style="text-align: center;">3</td><td style="text-align: center;">4</td><td style="text-align: center;">5</td></tr> <tr><td style="text-align: center;">6</td><td style="text-align: center;">7</td><td style="text-align: center;">8</td><td style="text-align: center;">9</td><td style="text-align: center;">10</td><td style="text-align: center;">11</td><td style="text-align: center;">12</td></tr> <tr><td style="text-align: center;">13</td><td style="text-align: center;">14</td><td style="text-align: center;">15</td><td style="text-align: center;">16</td><td style="text-align: center;">17</td><td style="text-align: center;">18</td><td style="text-align: center;">19</td></tr> <tr><td style="text-align: center;">20</td><td style="text-align: center;">21</td><td style="text-align: center;">22</td><td style="text-align: center;">23</td><td style="text-align: center;">24</td><td style="text-align: center;">25</td><td style="text-align: center;">26</td></tr> <tr><td style="text-align: center;">27</td><td style="text-align: center;">28</td><td style="text-align: center;">29</td><td></td><td></td><td></td><td></td></tr> </table>		February 00							S	M	T	W	T	F	S			1	2	3	4	5	6	7	8	9	10	11	12	13	14	15	16	17	18	19	20	21	22	23	24	25	26	27	28	29				
December 99																																																																																																							
S	M	T	W	T	F	S																																																																																																	
		1	2	3	4																																																																																																		
5	6	7	8	9	10	11																																																																																																	
12	13	14	15	16	17	18																																																																																																	
19	20	21	22	23	24	25																																																																																																	
26	27	28	29	30	31																																																																																																		
February 00																																																																																																							
S	M	T	W	T	F	S																																																																																																	
		1	2	3	4	5																																																																																																	
6	7	8	9	10	11	12																																																																																																	
13	14	15	16	17	18	19																																																																																																	
20	21	22	23	24	25	26																																																																																																	
27	28	29																																																																																																					

ARIZONA MOUNTAINEERING CLUB
P. O. BOX 1695
PHOENIX, ARIZONA 85001-1695

DI APPT 1 ADDI LUDEE

