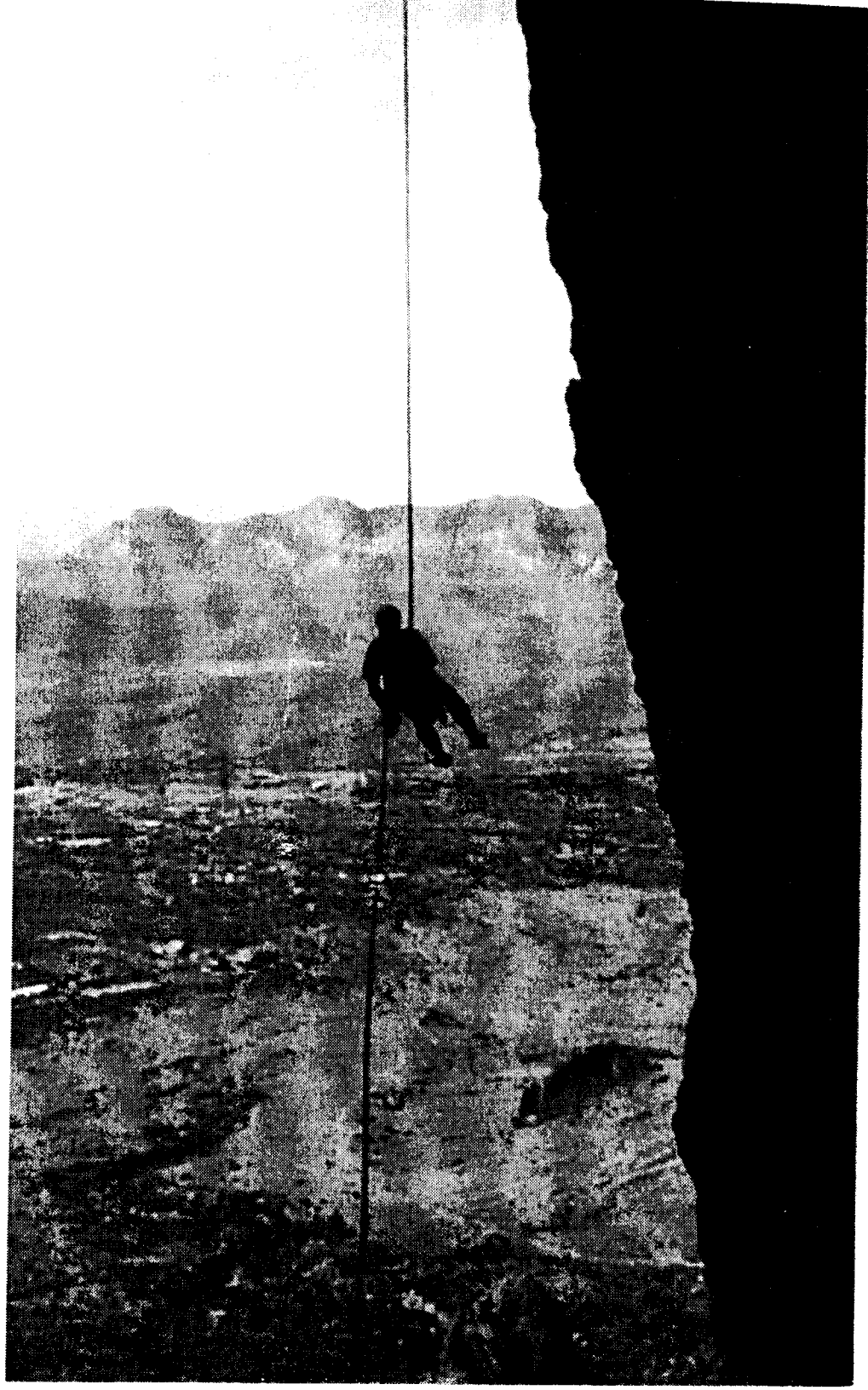


# ARIZONA MOUNTAINEER

DECEMBER 2001

*Here is the quintessential "Look Ma! I'm a crazy mountaineer" shot that is available to anyone at the cost of a 45-minute walk, a 4 pitch 5.5 climb — The Crying Dinosaur in the Superstitions. Charlene Todd took this classic photo of Jeff Hatfield in mid-flight during her group's recent basic school grad climb. Even if you have many frequent rappeller miles, this 150-foot free beastie is always a thrill.*



# THE ARIZONA MOUNTAINEERING CLUB

**MEETINGS:** The AMC normally meets the 4th Mon. each month (Nov. & Dec. meetings are usually the 3rd Mon.) at 7:00 pm at:

Los Olivos Senior Center  
2802 E. Devonshire Ave.  
Phoenix, Az.  
(28th St. just north of Indian School Rd.)

**BOARD MEETINGS:** Board meetings are open to all members and are held two Mondays prior to the Club meeting at Los Olivos Center.

**DUES:** Dues cover January through December. A single membership is \$25.00 per year. \$30.00 for a family. Those joining after June 30 pay 50% of the yearly rates. Members joining after October 31 who pay for a full year will have dues credited through the end of the following year. Dues must be sent to:

AMC Membership Committee  
6519 W. Aire Libre Ave.  
Glendale, Az. 85306

## **OTHER CORRESPONDENCE:**

Arizona Mountaineering Club  
P. O. Box. 1695  
Phoenix, Az. 85001-1695

**SCHOOLS:** The AMC conducts several rock climbing, mountaineering and other outdoor skills schools each year. Contact the Training & Safety Committee for schedules and costs.

## **NEWSLETTER**

Send stories and photos to Wally Vegors,  
6151 N. 8th Ave., Phoenix, Az. 85013  
or e-mail <vegors@worldnct.att.net>

## **BOARD OF DIRECTORS:**

President	Erik Filsinger	480-314-1089
Vice-President	Jeff Hatfield	480-783-8779
Secretary	John Keedy	623-412-1452
Treasurer	Bill Stinson	602-547-2560
Director-1yr	Chris Query	480-987-0900
Director-1yr	Tim Ward	602-212-1929
Director-1yr	Scott Hoffman	623-580-8909
Director-2yr	Bruce McHenry	602-952-1379
Director-2yr	Dave Larimer	480-425-9689

## **COMMITTEES:**

Access	Jen Davies	480-473-3742
Classification	Scott Hoffman	623-580-8909
Conservation	Charlene Todd	480-917-5354
Elections	Don Thomas	480-892-9513
Equip Rental	Paul Norberg	602-808-9244
Email	Penny Medlock	719-494-1171
Librarian	Richard Kocher	480-966-5568
Membership	Rogil Schroeter	623-878-3914
Mntneering	Erik Filsinger	480-314-1089
Newsletter	Wally Vegors	602-246-9341
NL Distribution	Robert England	480-821-4243
Outings	Bruce McHenry	602-952-1379
Programs	Steven Tillery	602-224-9003
Public Relations	Kim Huenecke	602 569-0790
Trail Maint.	Jutta Ulrich	602-234-3579
Training; Safety	Wayne Schroeter	623-878-3914
Basic Class	Sally Larimer	480-425-9689
Anchors Class	Tom Conner	480-897-7623
Lead Class	Mick Strole	602-788-4031
T-shirts	Wendy Gaynor	602-547-2560
WebSite	Kirra	.....
.....	webadmin@azmountaineeringclub.org	.....

## **FOR MORE INFORMATION:**

Call	(623) 878-2485
Email	info@azmountaineeringclub.org president@azmountaineeringclub.org board@azmountaineeringclub.org
Web	www.azmountaineeringclub.org

**THE AMC ACCESS COMMITTEE:** The Committee works by itself and with the national Access Fund to maintain public access to climbing areas. If you know of areas that are threatened with closures or climbing restrictions, please notify the Access Committee Chair, Jen Davies, 480-473-7342.

**THE ACCESS FUND:** This is a national, non-profit, climber's organization that works to maintain access to climbing areas nationwide. Climbers can join The Access Fund by mailing an annual, tax-deductible donation of \$20 or more to: The Access Fund, P.O. Box 17010, Boulder, CO 80308, or giving it to the AMC Club Treasurer to be sent to The Access Fund in your name. A donation of \$20 or more is needed to receive Vertical Times, The Access Fund newsletter. One can also join electronically — <<http://www.accessfund.org/Join.html>>

- 1 Index, Club Info.; Birthdays this month
- 2 Board Meeting Minutes
- 3 Discounts, Treasurer, Equipment, Newbies
- 4 Member Slides Program
- 5 President's Corner; PARTY; PR Help
- 6 Crying Dyno; Pinnacle Peak Trail Project
- 7 Queen Cr. Report; Lead Class; Kittens
- 8 Prescott Report; Ice and Snow Coming
- 9 Jacuzzi, Smith Rock, Trash Rappel
- 10 Dues Due; Budget: You?!! Why Not?
- 11 Basic School Report
- 12 PBC Date Set; Minutes continue
- 13 Outings, Contd.
- 14 Outing Calendar; Leaders

Yes, the days are short...  
But it's COOOOL!

So wrap your holiday shopping  
up early and go climb a rock.  
(Some are listed in this month's  
calendar – or find your own.)  
And don't forget the  
PARTY!

### AMC NEWSLETTER

The *Arizona Mountaineer* is published monthly by the AMC. Items for publication, subject to approval, should be sent to the editor at 6151 N. 8th Ave., Phoenix, 85013. Photos and other mountaineering photos are welcome (please submit prints). Climb write-ups ARE welcome. For info call the editor at 602-246-9341. Address e-mail to [vegors@worldnet.att.net](mailto:vegors@worldnet.att.net). Advertising in the *Arizona Mountaineer* is accepted, subject to approval, at the following rates:

Personal ads: free to members.  
Business ads: \$5.00 for business card; \$10.00 for half page; \$20.00 for full page \$25.00 for inserts/  
mo

**January Deadline: 8 December 2001**

### AMC LIBRARY

You must be an AMC member; i. e., your name must be on the most current membership list.

The circulation period is 1 month. Materials are due at the next general club meeting. The overdue fine is \$2 per title per month. Please contact the librarian if unable to return your books and tapes.

The circulation limit is three titles per person. One of these may be a videotape, for which a \$50 deposit is required. Each guidebook requires a \$25 deposit.

---

### DECEMBER BIRTHDAYS

Sally Larimer 1, Tu Pham 1, Kathleen Granger 2, Kawena Cushingham 4, Lionel Materassi 4, Wendy Gaynor 6, Kate Tillery 6, Shane Justice 7, Brian McHenry 8, Robert England 9, Jon Fallon 9, Leonard Dick 11, Perry Kearney 11, Keith Jendricks 13, Brian Sullivan 13, Carl Schwendler 14, Sherrie Holbrook 16, Dan Langmade 16, Al Weikel 16, Lenn Zazula 16, Al Potter 18, Mark Church 20, John Keedy 20, Philip Goebel 21, Paul Paonessa 21, Stuart Burns 22, Susan Peplow 22, Jan Ballard 23, Samantha Digard 23, Wallace Vegors 25, Christopher Ward 25, Bob Wirth 26, Alec Digard 27, Andrew Horst 27, Sarah McGiffert 27, Scott Yee 28, John Benson 29, Karin Callan 30, Mark Hubble 30, Paul Wenz 31

# MINUTES OF THE AMC BOARD MEETING: 12 November 2001

Board Members Present – Filsinger, Hatfield, Hoffman, McHenry, Keedy,

Larimer, Query, Ward

Committee Chairs Present – Conner, Huenecke, Vegors

Members Present – Kirra, Schneider

I. A quorum being present, the meeting was called to order at 6:10 PM.

II. Minutes of the October Board Meeting were approved.

III. Treasurers Report was tabled.

#### IV. President's Update

A. Ropes and Equipment – Fifteen new 60 meter ropes were purchased because of the great discount we got from REI. Ten of these ropes will be held in reserve pending review of equipment policies and/or they are needed for our normal gear rotation. The need for biners was discussed. Motion made, seconded and carried for Jeff Hatfield to be authorized to purchase 100 biners (60 lockers, 40 non lockers) and two gear packs at the best price he can obtain from local retailers or the Web.

B. 2002 Budget – Several amendment proposals were discussed for presentation at the Membership Meeting on Nov 26, 2001.

a. A line item for Public Relations for \$300 was inadvertently left off of the published draft budget.

b. The Mountaineering Committee would like to reallocate the published dollar amounts but maintain the total budget for expenses at \$500. Specifically they would like to allocate \$400 to capital expenditures and \$100 to operational expenses to replace the split of \$250 each.

c. T&S would like to increase its equipment budget to \$5,500 from \$5,000 for the classes to reflect projected needs. It would also like to increase it facilities' costs to \$800 from \$400. In addition it would like to reflect increasing publishing costs by showing \$1,100 rather than \$1,000.

d. In order to take advantage of national conferences that may occur in our region, a line item for "conferences" should be added and funded as a \$500 expense.

e. Adding line item of \$500 for Conservation to be balanced with REI Grant if received.

f. Reduce Cash Reserve by \$2000.

C. Motion made, seconded and carried to approve Scott Hoffman to spend up to \$500 for Outing Leader First Aid renewals at \$42.50 per renewal.

D. Motion made, seconded and carried to approve the appointment of Richard Kocher as AMC Club Librarian.

E. Motion made, seconded and carried to approve the appointment of Robert England as Newsletter Distribution Chair.

F. Motion made, seconded and carried to replace Standing Rule 11-13-73-11 with new Standing Rule 11-12-01-01 which reads:

**Resolution** of the Board of Directors of the Arizona Mountaineering Club, setting the procedure and policy pertaining to the participation of non-members in club activities.

1. Non-members may participate in club outings only as guests of members in good standing. It will be the responsibility of the member who invites a guest to obtain prior approval of the outing leader who is in charge of the outing, to obtain a waiver letter for that guest and have that waiver letter available for the leader of the outing on or before the event takes place. It will also be the member's responsibility to see that the guest is supplied with adequate equipment to facilitate his participation with comfort and safety. It will be the responsibility of the member and the outing leader to maintain close observation of the guest to insure he adheres to the proper procedures and safety factors so as to eliminate any possibility of accident or injury to himself and/or member of the party. In the final analysis, however, it will be the leaders decision as to whether or not guests will be allowed on his particular outing. Under no circumstances will a non-member be allowed to participate unless he is a guest of a member and has furnished the leader of the outing with a waiver letter.

2. It is also resolved by the Board of Directors of the Arizona Mountaineering Club that the club gain membership in the American Mountaineering Club to allow reciprocity with other climbing clubs that have a similar association. We, in turn, can then expect members of other clubs to participate in some of our outings. In this case, it will be the responsibility of the outing leader to obtain the waiver letter.

G. Electronic Newsletter Procedure – Every member gets a link notification from Belay Queen each month if their email address is on file. Rogil is to gather the information and will have the list of people who want hard copy of the Newsletter or for whom we do not have email addresses on file.

*(Continued on page 12)*

## DISCOUNT DIRECTORY

The following merchants currently offer a discount to AMC members.

**Arizona Climbing Center** - 1911 West Cheryl Drive, Phoenix, AZ 85021, 997-4171. Show your AMC membership card and get a 10% discount at gym and shop, special orders 20%.

**Arizona Hiking Shack** - 11645 N. Cave Creek Rd., Phoenix, AZ 85020, 944-7723  
Show your AMC membership card and get a 10% discount; special orders 15%.

### AMC RENTAL EQUIPMENT:

EQUIPMENT	Lb-Oz	Qty	Cost/Wk
Tents:			
4-season 2-3 man 7-6		1	10.00
4-season 2 man	6-0	1	6.00
3-season 2 man	5-0	3	5.00
4-season 1 man bivy	1-15	1	7.00
Sherpa Snowshoes		8	5.00
Ski poles (var. sizes)		4	0.50
Ice Crampons			15.00
Snow Crampons (sizes 6-14)		10	2.00
In-step crampons		1	2.00
Gaitors (Goretex)		2 pr	2.00
Ice axes (70-90 cm)		12	2.00
Snow shovel	1-10	2	5.00
Snow pickets; flukes		10 @	5.00
MSR Multifuel Stove		1	3.00
Yates Big Dudes #6, #7			5.00
Haul bag		1	10.00
PortaLedge		1	50.00
Jumars		3	5.00
Climbing shoes	Various sizes		Call

**EQUIPMENT RENTAL GUIDELINES:** Your name must be on the most current membership list. Deposit required; varies by item; generally \$20-\$50. The two-personal-checks system works best. Advance reservation suggested. If not using the reserved equipment, please call and cancel. Call Linda Locke at 602-997-4235 for shoes. For everything else, call Paul Norberg at 602-808-9244.

## TREASURER'S REPORT

### Statement of Operations

01/01/01 Thru 11/10/01

Category Description	Amount
<b>INCOME</b>	
Advertising	40.00
Equipment Rental (incl shoes)	526.00
Interest	127.39
Membership Dues	6,953.00
Mountaineering Schools	670.00
Program Income	10.00
Tee Shirts & Etc	962.00
Training & Safety	15,207.50
<b>TOTAL INCOME</b>	<b>24,495.89</b>

### EXPENSES

Access	905.53
Access Committee	200.00
Administration	1,498.98
Bouldering Contest	300.00
Capital Exp.	322.47
Equipment Maint	117.12
Insurance	877.51
Library	196.28
Merchandise Exp	1,517.86
Mountaineering	717.94
Newsletter	3,220.10
Outings	196.00
Programs	2,550.34
Service/Bank Charge	28.88
Training & Safety	8,780.57
<b>TOTAL EXPENSES</b>	<b>21,029.58</b>

**OVERALL FOR YEAR TO DATE**.....3,466.31

### ACCOUNT BALANCES

CD Account	5,116.93
Savings	525.22
Checking	6,159.46
<b>TOTAL ASSETS</b>	<b>\$11,802.61</b>

### NEW MEMBERS

Ronald Auerbach	Lynette Jones
Mark Carter	Juan Martinez
Scot Diskin	Lisa Modafferi
Kathleen Hendry	Shantala Ramaiah
Morgan Howard	Mischa Sumrall

# Slides, Casey, SLIDES!

The December meeting is going to be a Members "Open Projector Night." Each member is invited to bring a dozen of their best slides from their past travels and climbs.

*Members are also invited to bring munchies to share with the group.*

The meeting will be held on Monday, December 17th, from 7:00 - 9:00 p.m. at the Los Olivos Senior Center, 2802 East Devonshire Avenue, one block north of Indian School on the east side of 28th Street.

## **Sierramar Adventures in 2001**



**Jim Sumrall, Sierramar Adventures**  
**Web:** <http://www.jimsumrall.com>  
**E-mail:** [jim@jimsumrall.com](mailto:jim@jimsumrall.com)  
**Tel:** 480-894-9307 [888-241-2668]

**Join AMC member Jim Sumrall  
with adventures in Nepal and  
around the world.**

- |                      |   |
|----------------------|---|
| Mar 18 – Mar 31      | Springtime in the Annapurnas, with the Sierra Club      |
| Apr 10 – May 5       | Around Manaslu  |
| May 8 – Jun 9        | Annapurna Circuit – Summit attempt on Chulu West        |
| Sep 14 – Sep 28      | Iran Unveiled, with the Sierra club                     |
| Oct 6 – Nov 10       | "The Home Town Tour" Badel to Gokyo, the Everest region |
| Nov 13 – Dec 15      | Kanchenjunga Base Camp                                  |
| Dec 23 – Jan 5, 2002 | Guatemala: Land of the Maya, with the Sierra Club       |

The AMC has been around now for over 37 years. During that time a lot of good and some bad things have happened. What is for certain, however, is that the folks who volunteer their time are trying to do the best job they can on behalf of the club. We may disagree on specific topics, but those disagreements should not be characterized by malice. We have gone through changes and will go through more. Whatever your passion, please join me this Holiday Season in giving thanks not only for the great country we live in and the freedom's we enjoy.

Please also to devote a moment to thank all of those volunteers who make the club work for you. We should thank all those folks who regularly come back to help teach our rock climbing classes. Let us also give a special thanks to the fearless Outing Leaders who take those trips that so many of you go on. Also, however, let's thank those current and past committee chairs who are out arranging speakers, working on behalf of Access issues, guiding electronic communications, and looking after the club's budget and governance.

Hopefully this past year has been a good one for your life. I am painfully aware of the challenges to some of you caught in a downsizing economy and the resultant lay-offs. While some folks may enjoy the "government sponsored climbing grants", i.e., unemployment benefits, my wish for them is to find meaningful employment, but with plenty of vacation time. We all are probably adjusting to life in which terror may be a recognizable entity, but let us live and love to the best of our abilities.

Happy Holidays to your and yours... and be safe out there —*Erik Filsinger*

---

## **BASIC INSTRUCTORS PLUCKED**

We drew names for the instructor lotto from Basic School at the board meeting. Here are the winners of \$20 checks from the AMC:

Rich Kocher  
David Johnson  
Debby Brown  
Sherrie Holbrook  
Ray Steiner

—*Sally Borg Larimer*

## **PAR-Ty PAR-Ty PAR-Ty**

---

The AMC Annual holiday party will be held on Friday December 7 at Dave and Sally Larimer's. This is THE holiday event you do not want to miss. BYOB and bring a dish to share for the potluck dinner. AMC will provide for a main dish and some non-alcoholic beverages. After dinner will be the annual gift exchange.

The gift exchange is the highlight of the party. Please bring a gift item valued up to \$15, if you want to participate. Climbing and camping items are always appreciated and of course gag gifts (in good taste please) are tons of fun. Everyone opens a gift, then the trading and swapping begins. When time runs out you may be the lucky owner of a biner or quikdraw. And if not, well you might end up with the stuffed fish that made the rounds last year.

Party starts at 6 PM and lasts until 10 PM or Dave and Sally throw you out. The address is 5617 E. Windsor Ave, Scottsdale. That is 1 block south of Thomas Rd, just east of 56th Street. From the 202 take the McDowell exit. Go east on McDowell to 52nd St. Go north to Thomas. East on Thomas to the light at 56th St. Go south on 56th St and take the first left turn onto Windsor. It is a white house on SE corner of 56 Pl. and Windsor.

Since we all want to climb together for a long time, please bring a designated driver and drink responsibly.

— *Bruce McHenry*

---

## **KIM SEEKS SUCCOR**

---

The public relations arm of the club needs some help. We were invited to participant in the Holiday Harmony - Celebrate the World event at the Civic Center Mall in Scottsdale. The date is Saturday, December 1, 2001 and the time of this event is 3pm to 7:30pm.

This is a family friendly festival (bring the famly). I will need help running the booth at this event. If you love to talk about rock climbing and enjoy the outdoors - you are the person I am looking for! I really need help with this event because I will need to go to the bathroom and do not want to leave gear unattended at our table. Please come out and promote the club and spread some holiday cheer!

I REALLY need the help. For more information, please contact via email [khuencke@prodigy.net](mailto:khuencke@prodigy.net) or call me at 602-569-0790.

— *Kim*

## Crying Dyno Report

It was Saturday, October 27<sup>th</sup>, and the Fall 2001 Basics School students were ready for their graduation climb. Our team included our leader: Jeff Hatfield; instructors: Susan Hatfield, Phil Goebel, John Keedy, and myself; students: Robert England, Ron Hendricks, Linda Prideaux, and Nicole Soares. And our objective was the 3 pitch rhyolite pinnacle, called the Crying Dinosaur.

The Crying Dinosaur (or the Dino for short) is one of the multi-pitch classics in the Superstitions. And, having not yet added this climb to my tick list, I was quite excited to have an opportunity to help out on this fabled route. (This is a good way to get out and climb one of the classics around town – just show up and help out with class, and get on the list – who knows?)

After a short approach up the Siphon Draw trail, a bit of cat-claw bush-bashing occurred. The Dinosaur goes at 5.5, but the first move sure seemed considerably tougher than a 5.5. move, and many of us struggled getting off the ground. After that, it was mostly smooth sailing, with one or two tricky moves along the way to keep us honest. One of these moves was a narrow chimney that required most people to remove their packs in order to squeeze through. The chimney provided good entertainment and joking about leaving people in there, if their butt was too big to fit through. Of course, everyone made it through the chimney in grand style! ☺

Jeff did an incredible job leading the climb – with safety, efficiency, and fun all in mind. It takes a brave leader to take the sharp end (lead climb) on Superstition rock – with long run outs (a long distance between placements) and crumbly rock all around.

It did not take long before the objective was reached: the top of the Dino. But that is only ½ of this classic climb, as another journey was about to start, with the two rappels off of the Dino. The first rap, is a tricky 50 footer, with the fall of the rock wanting to take you right into the thorny needles of a Saguaro cactus. After that rappel, the BIIIIG free-hanging 150-footer had to be tackled. This second rap is really what makes the Dino a classic. The feeling of exposure, as the land slopes away out of Siphon Draw and out towards Apache Junction makes it seem like you have much more than 150 feet to go! And the free-hanging nature – well, it made for spectacular photo opportunities.

After everyone was safely back on the ground, we sorted gear, and headed back out through the cat-claw jungle. And, back at the cars, we were all able to chalk up the Dino as another good day out on the rock.

*Charlene Todd*

## Help Get Pinnacle Peak Ready

Just what you wanted to hear! The work on the Pinnacle Peak Trailhead is proceeding and the City of Scottsdale is attempting to get everything finished for a mid-January opening. They are serious about this, though they recognize their credibility with respect to opening dates is far into the negative range.

The climbing area at Y-Crack needs some additional work. There are a few stretches of approach trail that need some work to get water to move off the trail rather than along the trail. The serious work is along behind the Y-Crack climb where there are 8 or 9 additional climbs. There the grade is similar to what was encountered in developing the trails to the peak. However, there is even less of the pretending rock (rapidly decomposing granite) in some sections. Paul Dief, Wayne Schroeter, and Michael Baker met with City trails staff to reviewed conditions on site. We are working on a design for stabilizing these areas given the sever restrictions. The city refuses to consider air—a helicopter lift of materials (timbers, re-bar, cement, water).

Here is the plan:

### **December 1 - Mule and footing-pour day**

Depending on how much of the materials are air-lifted and where, we may need arms and legs (actually, bring your entire body) to pre-position materials at the work area. We will also set some anchors for a "staircase" based on an ingenious design offered by Paul D. (Lets give him credit now so we can blame him if it doesn't work.) We want to pour some concrete and let it cure well before we load it on December 8. This should take about a half-day.

### **December 8 - Trail and hillside stabilization day.**

We will need about 15 people to complete the work. At least half should plan to stay for most of the day.

Work on both dates will start at 8:30 AM both dates. Bring work gloves and boots, hat (sun protection), water, and snacks.

We'll meet at the entrance to the Pinnacle Peak Trail, just beyond the Pinnacle Peak Patio off Alma School Road (between Dynamite / Rio Verde and Happy Valley Road).

There are some uncertainties with all of this, so the best thing is for people to get on the list for either or both dates. Email addresses are best. Then we can keep you up to date, if there are any changes. We are counting on AMC and Phoenix Rock Gym members to do this work. (VOA will have another small project in a different location on the 8th as well.)

Send email to: michaelb@dgccenter

If you need to leave a phone message, call Jutta at 602.234.3579



## Queen Creek Clean-up and Climb

Several years ago, we were leaving the Queen Creek climbing area. Shortly after turning onto US60, heading towards Phoenix, AMCer Rick Taylor exclaimed: "We live in a post card!" Those words ring true, every time I travel that section of road. And I am proud that the AMC does their part to keep that scenic road worthy of a post card, by picking up the litter strewn along the way.

This year was no different. A crew of 17 people showed up to do their part. They picked up 22 bags of trash and part of a mobile home. (I'll bet the owners of that mobile home were bummed, when their home showed up at its final destination!)

And then the fun started. Chris Query and Tim Ward were our outing leaders, and they set up several great climbs in the Mine Area. Once we all arrived at the Mine Area, the climbers took to the rocks, and didn't stop climbing until the sun was about to set, and it was time to tear down. Many, many thanks to Chris and Tim!!!!

The Clean-up and Climb outing is always the weekend after Basics School, so that new students have an opportunity to participate in a club community service activity. It also serves to introduce the Basics Students to a local crag, with absolutely fantastic routes. I especially enjoy the fall Clean-up and Climb outing. It is usually my first time back to Queen Creek, at the end of a long hot summer – and I am always refreshed and find myself happily looking forward to a good winter, with many trips to the area.

Thanks again to all of the AMCers for their help in removing the trash, and for the good camaraderie on the rocks!

The following AMCers participated:  
Outing Leaders Extraordinaire and Climbers:  
Tim Ward and Chris Query

Trash picker-uppers and Climbers:

Joel Arbic	Shantala Ramaiah
Nancy Birdwell	Juan Restrepo
Isabel Brady	Evan Smith
Bill Campbell	Joan Smith
Karol Harvey	Charlene Todd
John Keedy	Gina Ishida
Tim Lange	Kirra
John Perlman	

## Leaders Proliferate

If faced with a demand that they "Either lead, follow or get the #@!! out of the way," the latest class to go through AMC's Lead School will be able to do any of the three, including the first option which may not have been possible for them before attending the September class. Congrats to grads and thanks to the volunteer instructors.

Lead school instructors for 9/2001:

Debby Brown  
Erik Filsinger  
Sue Goins  
Daniel Gonzales  
Sherrie Holbrook  
James Iverson  
Ron Jachimowicz  
David Johnson  
David Larimer  
Sally Larimer  
Bruce McHenry  
Jeffry Nagel  
Bruce Robbins  
Rogil Schroeter  
Wayne Schroeter  
Kathy Sharp  
Jef Sloat  
Mick Strole  
JuttaUlrich

Lead school students for 9/2001:

John Ainlay  
Bill Demlong  
Ana Franco  
Philip Goebel  
Justin Hall  
Mark Hubble  
Perry Kearney  
Kurt Korpong  
Carolyn Lim  
Maryann McKessy  
Melody Moses  
Heather Ryan  
Mary Sauve  
Beatriz Schnee  
David Smith  
Brian Sullivan  
Al Weikel  
—Wayne S.

## HELP!

### I'm Surrounded; OUTNUMBERED!

A few months ago I got adopted by a really special cat who was just a little bit pregnant at the time. She had four remarkable babies, all very smart and unusually beautiful. They are now 17 weeks old and we're all in a 1-bedroom place. OY!

I have had several leads for adoptions fall through as the weeks have rolled by so I need to find homes for 3 of these kids while they're still fairly small and adorable to strangers. (After 5 minutes in your lap they'll be adorable for life.)

Please take on 1 or 2 if you can or at least check with your non-AMC friends for possibilities. I'd really like to know they are going to sweet homes. Call me any evening or just hit my phone machine so we can arrange a viewing.

Thanks, Gumby.

## Recent Basic School Grads in Prescott

On November 4<sup>th</sup>, 15 of us headed north for a day of climbing at the Granite Dells at Watson Lake, outside of Prescott. Our original plan had been to go to the Nursery area of Lower Sullivan Canyon, but the recent high temperatures and the southern exposure of that area changed our minds. The outing was a chance for recent Basic School graduates to practice what they'd learned in an environment of their peers.

The AMC has long used Watson Lake, and particularly Time Zone Wall, as a training ground for Lead School. The easy accessibility, beautiful view, and fun climbing also make it a good choice for climbers looking to work on their technique.

We set up 6 climbs ranging from 5.6 to 5.9; easy enough on the low end to boost the ego, but difficult enough on the high end to provide some challenge. One nice thing about the routes at Time Zone is that once you've climbed a particular route, you can move a few feet left or right of your original line, and it feels like you're on a different climb. That was especially helpful since the climbers far outnumbered the available climbs.

Everyone seemed to have a good time, climbing as much or as little as he or she desired. If we'd had a

contest for the most climbs in a day, Kathy Granger would have taken the top prize with an impressive 9-1/2 climbs. It was enjoyable to see all of the recent students expand their repertoire of skills and continue to develop their confidence.

Thanks to everyone who participated: Lee and Sheryl Bennett, Markita Martinez, Vicki Kooney, Robert England, Jodie Ainlay, Kathy Granger, Lionel and Ira Materassi, Melissa Spiath, Aaron Ewing, and Kelly Hiatt. Thanks also to John Ainlay and Susan Hatfield for their great work setting up and tearing down climbs.

*-Jeff Hatfield*

### **'TIS THE SEASON**

...to scrape the rust off your vorple crampons and frumious ice tools and pilgrimage to the land of frozen waterfalls and steep snowfields. Check out the classes for which AMC has arranged special group rates. They are listed under "Commercially Available" on page 13.

**Looking for a Financial Advisor? It's always a good time to start your personal financial plan and investment portfolio.**

**Financial Planning  
Investment Management  
Financial Services and Tax Planning**

**Bruce A. McHenry  
Senior Financial Advisor**

**Slaysman McHenry & Associates  
7702 E. Doubletree Ranch Rd.  
Suite 230  
Scottsdale, Az 85258  
602-776-9181**

**Securities offered through W. B. McKee Securities, Inc.  
Member NASD & SIPC**

## JACUZZI SPIRE – Grad Climb Report

---

*Instructors: David & Sally Larimer, Bryan & Carrie Howell, Kurt Korpong*

*Students: Sheryl & Lee Bennett, Scott Yee, Kevin Pugh*

A few years ago, climbing "Don't Bug Me" on Jacuzzi Spire with David, the bugs were so thick, I swore I'd never go back. But a multi-pitch grad climb is always fun, and I've been told by lots of climbers that they've never seen more than a few bugs out there since that time. And so, I found myself out on Jacuzzi Spire again.

I was busy telling stories as I drove up I-17 and blew right past the Table Mesa Road exit. It was a subconscious plot to have to drive up to the Rock Springs exit to turn around. We should have stopped to buy a pecan pie at the Rock Springs Café, but David was in a hurry to get out to the climb.

We made it to the trailhead, loaded up with ropes and began our hike. The hike is pretty pleasant, except that last uphill part. We went up the route in the gully past the spire, which isn't too overgrown, but sure feels steep. We didn't lose anyone on the approach, although there was a lot huffing and puffing going on.

David led the climb and spent the day on top and I camped out on the 2<sup>nd</sup> belay ledge all day. Carrie was on the first belay ledge, and Bryan and Kurt stayed on deck. All of the students cruised the climb, all using slightly different techniques to navigate their way up the Spire. After all the students were safely anchored on top, the instructor train started moving up to the top. I was the last one to top out, and as I arrived, the students were already rappelling off. Judging from the serious looks on all their faces, the rappel was pretty exciting for them.

The bugs on this trip weren't too bad, but they started coming out later in the afternoon. One landed on Carrie as she climbed, causing her to let out a blood curdling scream. Everyone on top thought she had taken a huge whipper or fallen out of her harness or something. I saw the whole attack, and I had plenty of sympathy for her. I'm fearless about a couple of things – but certain kinds of bugs make me almost hysterical.

We were all back to our packs by 4:15pm and back to the car well before dark. After some celebratory sodas at the trailhead, we headed back to town and to the grad party at Marilyn Geninatti's. We were the last group to report in, joining the party to hear stories of all the other grad climbs and share in all the great food. Sounds like all of the students had a good time and nobody got hurt, so it was a great day all around.

— Sally L.

## More On Smith Rock

---

Hi Wally,

*I'd like to submit an article for the newsletter since Smith Rock has been featured recently. I am Sam Digard. Even though I moved from Phoenix, I maintain membership in the AMC and get a chance to "hang" every now and then with the club people. For example J-Tree this year. Anyway, here is the newsworthy stuff:*

Smith Rock is unique geologically and as an accepted place to climb. Living here in Portland, it has become adopted as our local crag. Most of the rock is compressed volcanic ash called "welded tuff". It features embedded rocks - some protruding so prominently it gives climbs a "gym-like" experience. Other areas range from smooth faces to every kind of crack imaginable. There are Huecos ranging from those big enough to sleep in down to climbs that are only mono pockets.

The guide book and more recent supplement leave a bit to be desired. We have learned by experience and local climbers about 3 pitch climbs that go at 5.6 or so. There are several large basalt areas, carved out by the Crooked River that can be top roped. The most famous kahuna of a climb is Monkey Face. Most people aid it's 5.12 routes. Some bivy in the mouth!!!

We would like to extend an invitation to AMC people visiting the northwest to look us up for beta and to be our rope guns (a little humor there). Whether it is Smith or walking up these glacier covered bumps. Louise and I are usually adventuring somewhere and would be happy to help provide local knowledge.

— Sam Digard  
email - samiam@cybcon.com

---

## Attention graduates of the most recent Anchors school:

Some of you did not get around to the Trash Rappel rigging on Tuesday night, and others did not get to do it on Sunday. Please contact me and we'll work out a time and place to do some make-up training.

Also, if any of you are a bit foggy about anything else in we covered in anchors, please also call and I'll help you get 'dialed-in'. This stuff is important and high stakes, so let's take the time, eh?

Gumby. 602-508-9696

## THAT TIME AGAIN . . .

Dear Member,

It is time to renew your membership for 2002. The membership year runs from Jan. to Dec. Dues are \$25 for single, \$30 for families.

Please consider this - the more members we have, the more influence we have in dealing with access issues. United we stand...

Please make your check payable to AMC and bring to the next meeting or send to:

AMC Membership  
6519 W. Aire Libre  
Glendale, AZ  
85306

Call 623-878-3914 if you have questions. If your name, address, email, or phone has changed, please enclose corrections with your check.

Climb safe and enjoy life!!

*Rogill's* not too early to start thinking about the

## Have You Considered . . . ?

... the annual election of AMC officers and board members which will take place at the regular member meeting on January 28th? The positions of President, Vice President, Secretary, and Treasurer, as well as three director positions, will be up for a vote.

If you're interested in serving on the board and you'd like to see how it functions, we invite you to attend one of the upcoming board meetings. Meetings are open to all club members, and are held at the Los Olivos Senior Center two weeks prior to the regular club meeting. Board meetings generally run from 7:00 to 9:00 p.m., but on a temporary basis, the meetings will start at 6:00 p.m. in order to allow extra time to clear out a backlog of agenda items.

If you are considering running for a board position, please contact Elections Committee Chairperson Don Thomas, or President Erik Filsinger to have your name added to the ballot.

Members who have paid their 2002 dues will decide AMC management for the coming year at the January Membership Meeting.

## 2002 Budget Up for Approval in December

We are involved in our annual budget approval process. The By-Laws call for the budget to be presented to the membership in November and approved at the December Member Meeting. Due to timing of notice issues and to take advantage of member input at the November meeting, we published the draft budget in the November newsletter which you already have. We will discuss the draft budget during our November 26 member meeting. That draft budget is incorporated herein by reference and you can visit it on Page 10 of the November newsletter.

There will be several possible amendments suggested to the draft budget at the November 26 meeting. I wanted to list those to you. The amended budget would then be voted on in December. Because the draft budget was already published, the Board has not voted on the proposed amendments but will let you decide which to include.

Here are the amendments which may be offered:

1. A line item for Public Relations for \$300 was inadvertently left off of the published draft budget.
2. The Mountaineering Committee would like to reallocate the published dollar amounts but maintain the total budget for expenses at \$500. Specifically they would like to allocate \$400 to capital expenditures and \$100 to operational expenses to replace the split of \$250 each.
3. T&S would like to increase its equipment budget to \$5,500 from \$5,000 for the classes to reflect projected needs. It would also like to increase its facilities' costs to \$800 from \$400. In addition it would like to reflect increasing publishing costs by showing \$1,100 rather than \$1,000.
4. In order to take advantage of national conferences that may occur in our region, a line item for "conferences" should be added and funded as a \$500 expense.

Please review the above and contact the Board if you have any questions. Other amendments may also be offered during the November meeting. Remember to come to vote on the amended budget in December.

—Erik Filsinger

## Basic School Report

Another group of 40 basic climbing students graduated from AMC's Basic Climbing School in October. The unseasonably warm weather kept everyone looking for shade and this is the first class in several years that we DIDN'T see any snakes. We were out there roasting, the snakes were staying cool... Does that mean snakes are smarter than we are?

We had a mix of students, a few who had never climbed before, many who had climbed in the gym, and a few who had climbed outdoors already. All students had the opportunity to learn about climbing safety and self rescue, as well as a little climbing technique. The vast majority of students who returned the school surveys rated the class as "excellent." Thanks to all the volunteers who put in so much work to make our classes successful!

One of the common comments in the surveys was that students would like to see more emphasis on climbing technique. Teaching climbing technique in a large group is difficult, and it seems to me that the best way to work on technique is to get out on the rock and practice. I hope that all of the students will come to outings and stick with it for a while. I'm confident that more experienced climbers will share their knowledge of technique in a smaller group setting, helping the students get comfortable in their new, vertical world.

The key for new Basic students is to get out there and climb now. When I took Basic school a few years back, the outings around the holidays got kind of sparse. I was hooked on climbing, but needed an outing, or someone to climb with, in order to climb. I remember being thrilled when Wayne and Rogil invited me to go climbing one weekend when there was no club outing. I didn't have a climbing partner and was brand new to the club, so they kind of adopted me.

I encourage all instructors, if you climb independently of club outings, extend an invitation to a couple of new Basic students to go climbing some weekend. It's a good way to get new members involved in the club and expand your circle of friendship in the AMC.

--Sally Larimer

### Instructors for 10/01 Basic school

Jason Aronson  
Ross Astoria  
Troy Axelrod  
Isabel Brady  
Debby Brown  
Sean Colonello  
Bill Fallon  
Gary Felton  
Erik Filsinger  
Marilyn Geninatti  
Philip Goebel  
Daniel Gonzales  
Justin Hall  
Jeff Harvey  
Karol Harvey  
Jeff Hatfield  
Susan Hatfield  
Gary Hendrickson  
Scott Hoffman  
Sherrie Holbrook  
Bryan Howell  
Carrie Howell  
Mark Hubble  
Lynne Hulvey  
James Iverson  
Ron Jachimowicz  
Keith Jendricks  
David Johnson  
Perry Kearney  
John Keedy  
Sheri Kenly  
Rich Kocher  
Hoon Koo  
Kurt Korpong  
Kevin Kriegel  
Linda Kriegel  
Bill Kurek  
Tim Lange  
David Larimer  
Sally Larimer  
Carolyn Lim  
Linda Locke  
Bruce McHenry  
Maryann McKessy  
Penny Medlock

Tim Medlock  
Melody Moses  
Jeffry Nagel  
Fred Padgett  
Chris Query  
Julie Recob  
Randy Recob  
Bruce Robbins  
Lance Roth  
Heather Ryan  
Glen Schroering  
Rogil Schroeter  
Wayne Schroeter  
Kathy Sharp  
Diana Sherwood  
Jef Sloat  
Ray Steiner  
Scott Steinhagen  
Mick Strole  
Dave Tanton  
Rick Taylor  
Charlene Todd  
Jutta Ulrich  
Clay Vollmer  
Tim Ward  
Al Weikel

### Students for 10/01 Basic school

Jodie Ainlay  
Joel Arbic  
Brooke Bagwell  
Lee Bennett  
Sheryl Bennett  
Brian Bible  
Lynn Bible  
Michael Boylan  
Jon Burroughs  
Brian Chang  
Sława Ciula  
Voytek Ciula  
Phil Conde  
Robert England  
Aaron Ewing  
Carl Fagerman  
Mark Gordon  
Kathleen Granger

Ron Hendricks  
Kathleen  
Hendry  
James Holloway  
Gary Huckaby  
Garry  
Kachkovsky  
Vicki Kooney  
Barbie Leung  
Vanessa  
Lizarraga  
Grant Loper  
Markita  
Martinez  
Irasema  
Materassi  
Lionel Materassi  
Randall  
McNerlin  
Sharon Nichols  
Linda Prideaux  
Kevin Pugh  
Milo Rocha  
Brian Roettger  
Kathleen  
Shepler  
Nicole Soares  
Melissa Spieth  
Scott Yee

—Rogil S.

## GET READY TO VOLUNTEER! 2002 PBC DATE SET

---

To all of you who volunteered before and to all of you who are excited to volunteer for the first time:

April 19 through 21, 2002 is the date of the 19th Phoenix Bouldering Contest, held at Oak Flat Campground, east of Superior, Arizona. This is the world's largest outdoor bouldering competition. Normally there are between 525 and 575 competitors working some 300 plus problems. The campground is used as the staging area, having 30 or more vendors and great gear and clothing deals, rock bands, climbing walls, and lots of activities. A portion of the surrounding climbing areas is used for the competition - see the Queen Creek guide. This event requires lots of volunteers - for judges, officials, security, registration, recruiting volunteers, and helping with various events. If you haven't helped before, you are in for a treat. Barring weather problems, the actual climbing competition happens on Saturday with a huge party that evening and the awards ceremony. Many other activities go on on Friday and Sunday too.

Mark your calendar NOW to set aside this weekend to (1) be a competitor and/or (2) help out as a volunteer. There will be more information forthcoming in your newsletter received at the January 2002 meeting. We will begin recruiting in February. AMC has been a major contributor of volunteer help in the past and we have a "standard" to uphold. We will need AMC help calling the membership list to recruit volunteers. Let me know if you would like to help in this endeavor.

Check out the PBC website at [www.phoenixboulderingcontest.com](http://www.phoenixboulderingcontest.com). Once the site is ready you will be able to register as a volunteer and competitor on the website. Recruiters will also have forms or I can download them to you.

Oh yes...I know...I "retired" from the position as volunteer coordinator :) Oh well...it is another year now and guess what...I am doing it again...long distance. So is it more important than ever that I have "local" help in recruiting.

Well I did retire...but only from my paying job. As of November 28 I will be residing in Colorado. My new contact information is as follows: Mailing address: P. O. Box 114, Nathrop CO 81236-0114 Physical address: 14603 CR 276, Nathrop CO 81236  
Phone: 719-395-6418 Email: [skgoins@qwest.net](mailto:skgoins@qwest.net)  
You are welcome to come visit "Dreamcatcher" for hiking, mountain biking, rock climbing,

mountaineering, "ticking" off 14er's, white water rafting, snowshoeing, cross country skiing, downhill skiing, or sitting on my deck looking at five 14er's and drinking beer.

Thanks for your friendship and help through the years. I'll be seeing you in March and April, if not before.

--Sue Goins

Volunteer Coordinator, PBC  
AMC member and past president

---

## AMC BOARD MINUTES

(Continued from page 2)

### V. Old Board Business

- A. Bruce McHenry is working on the listing of hospitals and emergency contacts for climbing areas as well as a notebook of club policies and procedures for outing leaders.
- B. D & O Insurance was obtained effective November 1, 2001

### VI. New Board Business

- A. ADOT Highway Cleanup - The sign has been taken down and ADOT believes AMC has not been cleaning up our assigned highway mile. Apparently this is due to non-receipt of completion forms that we should have been filling out and sending in. We will now need to make application for this highway mile. Davies will be contacted.
- B. Huenecke was contacted by Scottsdale to set up a booth for their Holiday Harmony Day at the Civic Center on Dec 1, 2001. She will ask for volunteers to help with this event.
- C. The club was contacted by Outdoor Industry Association who is having a convention April 4-7. They are asking for some people power to help. Huenecke will contact them for clarification of their needs. Kitty Calhoun will be giving a slide show at that event.
- D. The annual UIAA conference will be held in Flagstaff in 2002. We will consider some form of attendance at this event as the time approaches.
- E. The AMC Christmas Party will be held at the home of Dave and Sally Larimer on December 7, 2001.

VII. Meeting adjourned at 9:10 PM

--John Keedy

## **AMC OUTING CALENDAR** (Continued from page 14)

---

for the whole week, or just a few days. Contact Richard for directions and information. Richard Horst, 602-953-9198.

\*Group outings: The campsite, where possible, is reserved by the AMC. There is no designated leader, although there may be a leader to work with non-leaders (call to find out). Call to find car-poolers. Parking is first-come, first-served in some cases  
To request outings: Call Outings Chairperson Bruce McHenry 602-952-1379. To cancel: Please call the outing leader to cancel as soon as possible: there may be a waiting list. Also, the leader will know not to wait for you on outing day.

### **BILLBOARD**

#### **Other Scheduled Events**

Outings listed in these sections are not AMC sanctioned outings. Any AMC member can list an event he or she is planning and which is open to other AMC members. The member does not have to be an approved AMC Outing Leader. If you wish to participate you should be physically and mentally prepared and equipped with the appropriate gear and should contact the member planning the outing. You are responsible for your own safety, not the person leading the outing. You should always be aware of the risks involved in outdoor activities and conduct yourself accordingly.

Tuesdays **North Mountain Hikes Evening**, Rogil Schroeter, (623) 878-3914 or Rogil.Schroeter@Honeywell.com  
Wednesdays **Arizona Climbing Center**, 6:00 p.m., Rogil Schroeter, (623) 878-3914.

#### **Commercially Provided Training and Events**

The events listed below are provided by commercial outfitters for the benefit of AMC members. These are not AMC Outings, nor are they led by AMC Outing Leaders, though they may be open only to AMC members. The commercial outfitter is solely responsible for all aspects of the outing, not AMC. While, in most cases, an AMC member may provide a service by AMC collecting the names of prospective participants and handling the logistics for out-of-town events, participants will sign up directly with the commercial outfitter.

The following classes/outings are being offered to AMC members through Southwest Adventures, a professional guide service located in Durango, Colorado. Please contact Erik Filsinger for more information at smorefil@aol.com if you are interested and want to sign up.

November 22-23 -- AMC Beginning Ice Climbing, \$125 for the 2 days  
November 24 and/or 25 -- AMC Multi-pitch ice climbing, \$190/day  
November 24 to 26 -- Winter Mountaineering, \$315 for 3-days  
December 30-31 -- AMC Multi-pitch ice climbing, \$235 for 2 days or \$190 for second day alone  
December 29-31 -- Winter Mountaineering, \$315 for 3-days  
January 19-20 -- AMC Beginning Ice Climbing, \$125 for 2-days  
January 21 -- Avalanche safety, \$50  
February 16-17 -- AMC Beginning Ice Climbing, \$125 for 2-days  
February 18 -- Avalanche safety, \$50  
March 29-30 -- AMC Multi-pitch Ice climbing, \$235 for 2-days, \$190 for thesecond day alone

## AMC CALENDAR OF EVENTS

---

*Participation in AMC outings requires club membership. Outings vary in degree of danger. When you participate in an outing you should be both physically and mentally prepared and equipped with the appropriate gear. You should always be aware of the risks involved in outdoor activities and conduct yourselves accordingly. The outing leader is not responsible for your safety, you are. Please contact the outing leader before going on an outing, discussing your capabilities with the outing leader. You must be over 18 years of age to participate, or must be accompanied by a parent or responsible adult, and obtain prior consent from the outing leader. Those accompanying minors are responsible for the minor's safety.*

### WHEN & WHERE & WHAT & WHO

- Dec 1 **Mogul Wall** Located on the northwest corner of Little Granite Mountain. No Limit. Meet at 8:00 at 118th and Rio Verde/Dynamite. Scott Hoffman 623-580-8909
- Dec 1 **Pinnacle Peak Trail Work.** Bring work gloves and boots, hat (sun protection), water, and snacks. We'll meet at the entrance to the Pinnacle Peak Trail, just beyond the Pinnacle Peak Patio off Alma School Road (between Dynamite / Rio Verde and Happy Valley Road). Start at 8:30 AM. Michael Baker michaelb@dgcenr or call Jutta Ulirch at 602.234.3579
- Dec 6 **Alpine Seminar.** PV REI. 6:30-8:30
- Dec 7 **AMC Christmas Party.** Pot Luck and bring an item under \$15 for the gift exchange. Dave and Sally Larimers. (see story elsewhere)
- Dec 8 **Mt Lemmon.** Limit 10. Sunny new area on Mt Lemmon. 5.7 to 5.11. Frank Vers 480-947-9435.
- Dec 8 **Pinnacle Peak Trail Work.** Bring work gloves and boots, hat (sun protection), water, and snacks. We'll meet at the entrance to the Pinnacle Peak Trail, just beyond the Pinnacle Peak Patio off Alma School Road (between Dynamite / Rio Verde and Happy Valley Road). Start at 8:30 AM. Michael Baker michaelb@dgcenr or call Jutta Ulirch at 602.234.3579
- Dec 8 **Beardsley Boulder Pile.** For recent Anchors School Grads to practice anchor setting. Yes come set a anchors and climb. Meet 9am at Taco Bell at 19th Ave. and Deer Valley Road. No Limit Chris Query 480-967-9268 or cquery@hotmail.com
- Dec 15 **Squeeze the Lemmon - Again!!** Mt Lemmon, area depends on weather. 5.8-5.10. Limit 12 (NO PETS-Please) Mick Strole 602-788-4031.
- Dec 16 **Camelback Mt.** Will do Hart Route or The Monk, depending on turnout. Limit 12. Meet at the ABCO parking lot NE of 44th St & Camelback at 7:00 AM. Jef Sloat 602-843-2490
- Dec 22 **Little Granite Mtn.** Limit 12. No dogs. Tim Ward 602-212-1929 <upsix@yahoo.com>
- Dec 25 **The 5th Annual Christmas Day Climb.** Climb at Svens Slab in the McDowells to see what Santa has brought the good little climbers. No Limit. Jef Nagel. 602-318-9538.
- Dec 29 - Jan 5. **Ourray Ice Park, CO.** Refresh your winter skills on some of the best ice climbing around. Top-rope single pitch ice climbs in the park. Accomodations at the Victorian Condos. Come up to play  
(Continued on page 13)

---

### AMC OUTING LEADERS

Requirements for becoming a leader: take the basic, AARS and Lead classes (or equivalents), be a member for at least one year, complete a basic first aid and CPR class (8 hours or more), and be approved for leadership by at least five current leaders through formal application process and by the Board of Directors. Contact Scott Hoffman at (623) 580-8909.

Bill Berkley .....	480-945-4346	Tim Medlock.....	719-494-1171	Jef Sloat.....	602-843-2490
Sally Borg Larimer...	480-425-9689	Jeff Nagel.....	602-318-9538	Bill Stinson.....	602-547-2560
Tom Conner.....	480-897-7623	Paul Norberg.....	602-808-9244	Mick Strole.....	602-788-4031
John Ficker.....	602-867-1487	Paul Paonessa.....	602-493-7356	Rick Taylor.....	623-487-8507
Eric Filsinger.....	602-906-1186	Chris Query.....	480-967-9268	Tim Ward.....	602-212-1929
Jeff Hatfield.....	480-783-8779	Brad Sanders.....	480-961-3674	Frank Vers.....	480-947-9435
Scott Hoffman.....	623-580-8909	Tim Schneider.....	480-497-8377	Gary Youngblood....	602-508-9696
Richard Horst.....	602-953-9198	Rogil Schroeter.....	623-878-3914		
David Larimer.....	480-425-9689	Wayne Schroeter.....	623-878-3914		



# DECEMBER 2001

## AMC Calendar of Events

Sunday	Monday	Tuesday	Wednesday	Thursday	Friday	Saturday																																																																																																		
<table border="1" style="display: inline-table; margin-right: 20px;"> <thead> <tr><th colspan="7">Nov 2001</th></tr> <tr><th>S</th><th>M</th><th>T</th><th>W</th><th>T</th><th>F</th><th>S</th></tr> </thead> <tbody> <tr><td></td><td></td><td></td><td>1</td><td>2</td><td>3</td><td></td></tr> <tr><td>4</td><td>5</td><td>6</td><td>7</td><td>8</td><td>9</td><td>10</td></tr> <tr><td>11</td><td>12</td><td>13</td><td>14</td><td>15</td><td>16</td><td>17</td></tr> <tr><td>18</td><td>19</td><td>20</td><td>21</td><td>22</td><td>23</td><td>24</td></tr> <tr><td>25</td><td>26</td><td>27</td><td>28</td><td>29</td><td>30</td><td></td></tr> </tbody> </table> <table border="1" style="display: inline-table;"> <thead> <tr><th colspan="7">Jan 2002</th></tr> <tr><th>S</th><th>M</th><th>T</th><th>W</th><th>T</th><th>F</th><th>S</th></tr> </thead> <tbody> <tr><td></td><td></td><td>1</td><td>2</td><td>3</td><td>4</td><td>5</td></tr> <tr><td>6</td><td>7</td><td>8</td><td>9</td><td>10</td><td>11</td><td>12</td></tr> <tr><td>13</td><td>14</td><td>15</td><td>16</td><td>17</td><td>18</td><td>19</td></tr> <tr><td>20</td><td>21</td><td>22</td><td>23</td><td>24</td><td>25</td><td>26</td></tr> <tr><td>27</td><td>28</td><td>29</td><td>30</td><td>31</td><td></td><td></td></tr> </tbody> </table>						Nov 2001							S	M	T	W	T	F	S				1	2	3		4	5	6	7	8	9	10	11	12	13	14	15	16	17	18	19	20	21	22	23	24	25	26	27	28	29	30		Jan 2002							S	M	T	W	T	F	S			1	2	3	4	5	6	7	8	9	10	11	12	13	14	15	16	17	18	19	20	21	22	23	24	25	26	27	28	29	30	31			<b>1</b> Mogul Wall Pin Pk Trail
Nov 2001																																																																																																								
S	M	T	W	T	F	S																																																																																																		
			1	2	3																																																																																																			
4	5	6	7	8	9	10																																																																																																		
11	12	13	14	15	16	17																																																																																																		
18	19	20	21	22	23	24																																																																																																		
25	26	27	28	29	30																																																																																																			
Jan 2002																																																																																																								
S	M	T	W	T	F	S																																																																																																		
		1	2	3	4	5																																																																																																		
6	7	8	9	10	11	12																																																																																																		
13	14	15	16	17	18	19																																																																																																		
20	21	22	23	24	25	26																																																																																																		
27	28	29	30	31																																																																																																				
<b>2</b>	<b>3</b> AMC Board	<b>4</b> CAMRA Meets	<b>5</b> Sunrise 7:18 Sunset 5:21 Moonrise 10:27p	<b>6</b> Alpine Seminar	<b>7</b> AMC Party  Last Quarter	<b>8</b> Beardsley Bounders Mt. Lemmon  Pin Pk Trail																																																																																																		
<b>9</b>	<b>10</b>	<b>11</b>	<b>12</b> Sunrise 7:23 Sunset 5:22 Moonrise 5:04a	<b>13</b>	<b>14</b>  new moon	<b>15</b>  Mt. Lemmon																																																																																																		
<b>16</b> Camel-back Mtn	<b>17</b> AMC Meets Member Slide Show	<b>18</b>	<b>19</b> Sunrise 7:28 Sunset 5:24 Moonset 10:01p	<b>20</b>	<b>21</b>	<b>22</b>  First Quarter  Little Granite Mtn.																																																																																																		
<b>23</b>	<b>24</b>	<b>25</b> Christmas Climb	<b>26</b> Sunrise 7:31 Sunset 5:28 Moonrise 2:43p	<b>27</b>	<b>28</b>	<b>29</b>  Ouray Ice																																																																																																		
<b>30</b> Full Moon Ouray Ice	<b>31</b> Ouray Ice																																																																																																							

**ARIZONA MOUNTAINEERING CLUB**

P. O. BOX 1695

PHOENIX, ARIZONA 85001-1695

PLACE LABEL HERE

