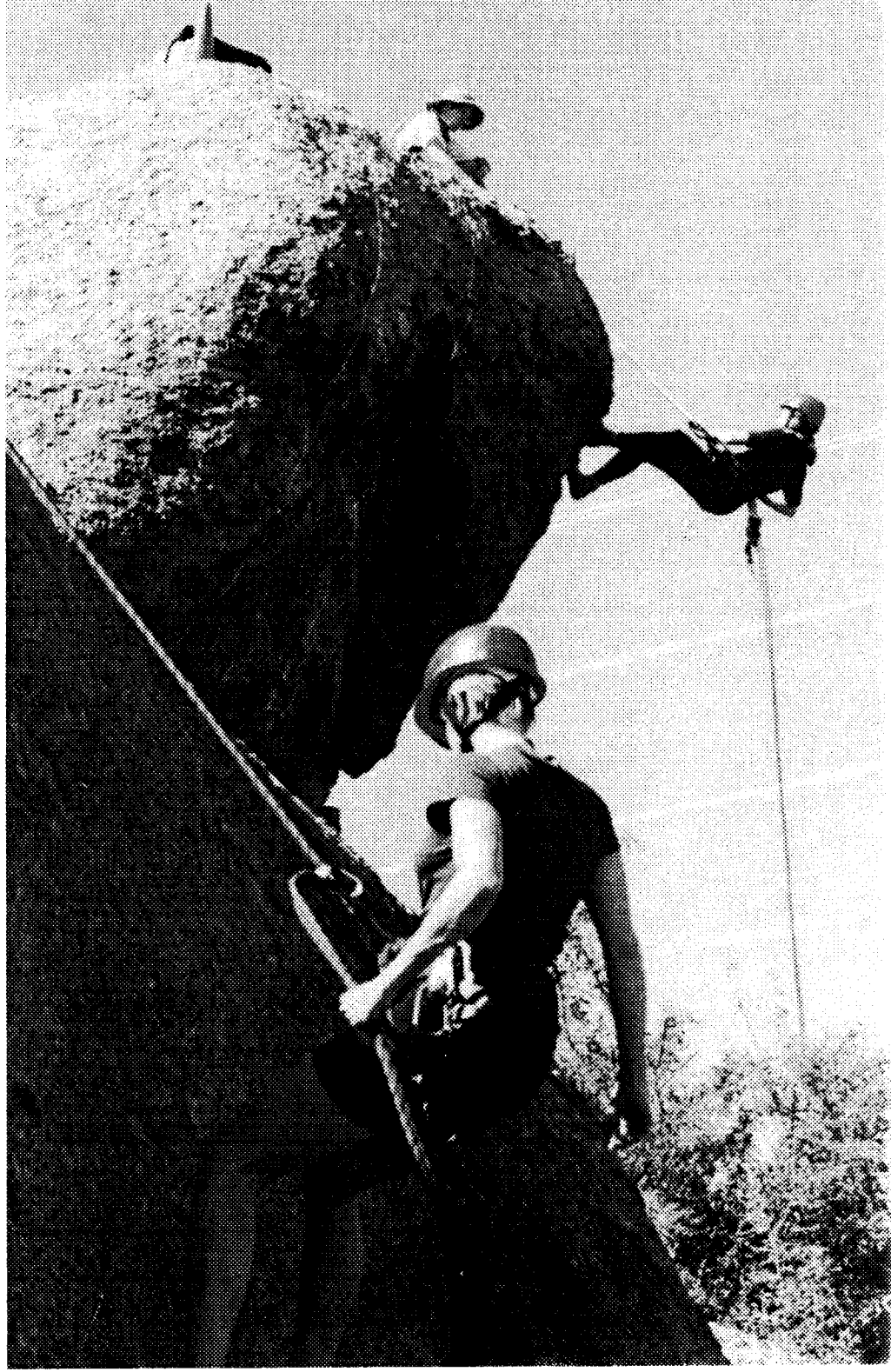


ARIZONA MOUNTAINEER

APRIL 2001

AMC's basic climbing class students got plenty of practice in all varieties of rappelling at the Opium Den rocks between Little Granite and the McDowell Mountains. Severity ranged from easy-slope slabs to free-hanging. A near-one-to-one instructor/student ratio meant constant checking and instant feedback on knots, belaying technique, calls, safety anchors and climbing moves and methods.



THE ARIZONA MOUNTAINEERING CLUB

MEETINGS: The AMC meets the 4th Mon. of each month (Nov. and Dec. meetings are usually the 3rd Mon.) at 7:00 pm at:

Los Olivos Senior Center
2802 E. Devonshire Ave.
Phoenix, Az.

(28th St. just north of Indian School Rd.)

BOARD MEETINGS: Board meetings are open to all members and are held two Mondays prior to the Club meeting at Los Olivos Center.

DUES: Dues cover January through December. A single membership is \$25.00 per year; \$30.00 for a family. Those joining after June 30 pay 50% of the yearly rates. Members joining after October 31 who pay for a full year will have dues credited through the end of the following year. Dues must be given to the treasurer or sent to:

Arizona Mountaineering Club
P. O. Box. 1695

Phoenix, Az. 85001-1695

SCHOOLS: The AMC conducts several rock climbing, mountaineering and other outdoor skills schools each year. Contact the Training & Safety Committee for schedules and costs.

NEWSLETTER

Send stories and photos to Wally Vegors, 6151 N. 8th Ave., Phoenix, Az 85013 or e-mail <vegors@worldnet.att.net>

FOR MORE INFORMATION:

Call (623) 878-2485

Email info@AzMountaineeringClub.org

Web www.AzMountaineeringClub.org

BOARD OF DIRECTORS:

President	Erik Filsinger	480-314-1089
Vice-President	Jeff Nagel	602-318-9538
Secretary	Lynn Alexander	480-396-1055
Treasurer	Bill Stinson	602-547-2560
Director-1yr	Ron Logan	480-497-6975
Director-1yr	Tim Ward	602-212-1929
Director-1yr	Scott Hoffman	623-580-8909
Director-2yr	Bruce McHenry	602-952-1379
Director-2yr	Dave Larimer	480-425-9689

COMMITTEES:

Access	_____vacant_____	
Co-Classification	Scott Hoffman	623-580-8909
Co-Classification	Jeff Nagel	602-318-9538
Conservation	Charlene Todd	480-917-5354
Elections	Don Thomas	480-892-9513
Equip Rental	Paul Norberg	602-808-9244
Email	Penny Medlock	719-494-1171
Co-Librarian	Mark Fleming	480-423-5064
Co-Librarian	Chelsea Alexander	480-396-1055
Membership	Rogil Schroeter	623-878-3914
Mntneering	Erik Filsinger	480-314-1089
Newsletter	Wally Vegors	602-246-9341
NL Distribution	_____vacant_____	
Outings	Bruce McHenry	602-952-1379
Co-Programs	Lisa Barnes	623-931-6721
Co-Programs	Donna Forst	602-485-4648
Public Relations	Kim Huenecke	602 569-0790
Trail Maint.	Jutta Ulrich	602-234-3579
Training; Safety	Wayne Schroeter	623-878-3914
Basic Class	Sally Larimer	480-425-9689
Anchors Class	Tom Conner	480-897-7623
Lead Class	Mick Strole	602-788-4031
T-shirts	Wendy Gaynor	602-547-2560
WebSite	Kirra	kirra@fastq.com

THE AMC ACCESS COMMITTEE: The Committee works by itself and with the national Access Fund to maintain public access to climbing areas. If you know of areas that are threatened with closures or climbing restrictions, please notify the Access Committee Chair, _____ VACANT _____.

THE ACCESS FUND: This is a national, non-profit, climber's organization that works to maintain access to climbing areas nationwide. Climbers can join The Access Fund by mailing an annual, tax-deductible donation of \$20 or more to: The Access Fund, P.O. Box 17010, Boulder, CO 80308, or giving it to the AMC Club Treasurer to be sent to The Access Fund in your name. A donation of \$20 or more is needed to receive Vertical Times, The Access Fund newsletter. One can also join electronically — <<http://www.accessfund.org/Join.html>>

THIS MONTH IN THE AMC

IN THIS ISSUE

- 1 Index, Club Info.; Birthdays this month
- 2 Board Meeting Minutes; New Members
- 3 Discounts, Treasurer's Report, Equipment
- 4 Program: Libeck Recounts China Climbs
- 5 President's Update on Projects
- 6 Anchors Class Skinny
- 7 E-Group forms; Instructors needed
- 8 Seminar Series; Queen Creek; Crevasses
- 9 Courthouse; AMC Decals; Book Event
- 10 ... Scree
- 11 ... Calendar Continued
- 12 ... AMC Outings Calendar: Leader List

AMC NEWSLETTER

The *Arizona Mountaineer* is published monthly by the AMC. Items for publication, subject to approval, should be sent to the editor at 6151 N. 8th Ave., Phoenix, 85013. photos and other mountaineering photos are welcome (please submit prints). Climb write-ups ARE welcome. For info call the editor at 602-246-9341. Address e-mail to vegors@worldnet.att.net. Advertising in the *Arizona Mountaineer* is accepted, subject to approval, at the following rates:

Personal ads: free to members.
Business ads: \$5.00 for business card; \$10.00 for half page; \$20.00 for full page \$25.00 for inserts/mo

May Deadline: 14 May 2001



NOT STUFF!!

GREAT WEATHER!

TONS OF STUFF GOING ON!

THE WORLD AWAITS YOU!

SO DON'T DAWDLE!

AMC LIBRARY

You must be an AMC member; i. e., your name must be on the most current membership list.

The circulation period is 1 month. Materials are due at the next general club meeting. The overdue fine is \$2 per title per month. Please contact the librarian if unable to return your books and tapes.

The circulation limit is three titles per person. One of these may be a videotape, for which a \$50 deposit is required. Each guidebook requires a \$25 deposit.

AMC APRIL BIRTHDAYS

Ray Steiner 4, Julie Sharp 9, Jeff York 9, Janet Krisinski 10, George Krall 12, Bill Reid 12, Jesus Cecena 16, Carolyn Lim 16, Chelsea Alexander 17, Ronald Logan 19, Lance Roth 19, Jim Sumrall 19, Karen Jachimowicz 20, Erik Filsinger 21, Chris Kirkpatrick 22, John Roberson 22, PJ O'Connell 23, David Larimer 30

MINUTES OF THE AMC BOARD MEETING: 3/12/01

Board members present: Erik Filsinger, Dave Larimer, Bruce McHenry, Scott Hoffman, Jeff Nagel, Bill Stinson

Committee members present: Don Thomas, Wally Vegors

The meeting was called to order at 7:08 p.m. at the Los Olivos Senior Center.

SECRETARY'S REPORT

The minutes of the February 12 Board meeting were approved.

TREASURER'S REPORT

The treasurer circulated the monthly financials for review. The treasurer purchased a CD based on interest rate considerations. The AMC will file the IRS forms required for non-profit entities. These forms will show compliance with our exemption from normal annual filing requirements.

PRESIDENT'S REPORT

The President gave an update on several informational items: an overview of the Risk Management Steering Committee meeting held recently; a request for Jeff Nagel (V.P.) to head up a combination of the Classification and Outings committees to recommend reasonable ways to provide incentives for Outings Leaders; a request for Jeff Nagel (V.P.) to head up a group looking into alternatives or better ways to handle newsletter distribution; and a request for all board members and committee chairs to help centralizing the various Key documents of the club. No action required of the Board.

OLD BUSINESS

Based on a request from the Programs Chair, the Board discussed at length the pros and cons of moving the meetings to a new location. There was some desire to reach a final decision that could be lived with for some time to come. Action: Scott Hoffman will work with a small group to assess site alternatives and report back to the Board.

Lengthy consideration was given to the topic of

providing the membership form/waiver on the website. Many pros and cons were discussed. Action: The Board decided that for now the only official version of the membership form should be the hard copy it gives to prospective members. In addition, an electronic version of the membership form will be placed on the website but will be used for informational and educational purposes only.

The Board authorized Scott Hoffman to locate and purchase a rope washing device.

NEW BUSINESS

Based on a request from the Web Chair, the Board considered ways to consolidate the double entry and double presentation of upcoming events on the website. Action: Bill Stinson will work with Kirra to develop alternative ideas and present a recommendation to the Board for improvements to the website calendar of events.

Sweat Magazine solicited advertising fees to feature the Club in an upcoming publication. Action: Erik Filsinger will contact Kim Huenecke, as PR Chair, for a recommendation and decision.

It was decided that we would actively solicit participants to our e-groups site through announcement of its features in the newsletter. Action: Bill Stinson and Tim Medlock to work up.

OTHER COMMITTEE REPORTS

None were presented.

The meeting was adjourned at 8:35 p.m.

NEW MEMBERS

Jodie Ainlay	Don Hoge
John Ainlay	Cheryl Leiher
Michael Frazer	Stephen Pettitt
Anita Grady	Brian Roettger
John Granger	Beatrice Schnee
Kathleen Granger	Rene Vereecken
Justin Hall	

DISCOUNT DIRECTORY

The following merchants currently offer a discount to AMC members.

Arizona Climbing Center - 1911 West Cheryl Drive, Phoenix, AZ 85021, 997-4171. Show your AMC membership card and get a 10% discount at gym and shop, special orders 20%.

Arizona Hiking Shack - 11645 N. Cave Creek Rd., Phoenix, AZ 85020, 944-7723
Show your AMC membership card and get a 10% discount; special orders 15%.

AMC RENTAL EQUIPMENT:

EQUIPMENT	Lb-Oz	Qty	Cost/Wk
Tents:			
4-season 2-3 man 7-6		1	10.00
4-season 2 man	6-0	1	6.00
3-season 2 man	5-0	3	5.00
4-season 1 man bivy	1-15	1	7.00
Sherpa Snowshoes		8	5.00
Ski poles (var. sizes)		4	0.50
Crampons (sizes 6-14)		10	2.00
In-step crampons		1	2.00
Gaitors (Goretex)		2 pr	2.00
Ice axes (70-90 cm)		12	2.00
Snow shovel	1-10	2	3.00
Snow pickets; flukes		10 @	1.00
MSR Multifuel Stove		1	3.00
Yates Big Dudes #6, #7			5.00
Haul bag		1	10.00
PortaLedge		1	50.00
Jumars		3	5.00
Climbing shoes	Various sizes		Call

EQUIPMENT RENTAL GUIDELINES: Your name must be on the most current membership list. Deposit required; varies by item; generally \$20-\$50. The two-personal-checks system works best. Advance reservation suggested. If not using the reserved equipment, please call and cancel. Call Linda Locke at 602-997-4235 for shoes. For everything else, call Paul Norberg at 602-808-9244.

FREE FILM ??!

Do you have a climbing, trekking, or etc. trip planned in the future? If so, would you like to give a slide show on your trip? Please contact one of the Program Committee Chairs, Donna Forst or Lisa Barnes to submit a written proposal for your trip. We will reimburse the cost of film and processing for all shows that get scheduled.

TREASURER'S REPORT

Statement of Operations
01/01/01 Through 2/28/01
Category Description

Amount

INCOME	
Administrative.....	.00
Advertising.....	.00
Book Sale & fines.....	.00
Equipment Rental (incl shoes)	28.50
Interest.....	.00
Membership Dues.....	3,250.00
Mountaineering Schools00
Program Income	10.00
Schools00
Tee Shirts.....	139.00
Training & Safety	2,905.00

TOTAL INCOME 6,332.50

EXPENSES

Access00
Access Committee.....	.00
Administration.....	59.37
Bouldering Contest	300.00
Club Functions00
Equipment Purchase00
Insurance	33.51
Library	50.42
Mountaineering00
Newsletter	341.28
Outings00
Programs	600.00
Bank Charge.....	.00
T-shirts.....	583.01
Training & Safety	207.10

TOTAL EXPENSES 2,174.69

OVERALL FOR YEAR TO DATE 4,1570.81

ACCOUNT BALANCES

CD Account	5,000.00
Savings	515.76
Checking..	6,667.41

TOTAL ASSETS \$12,183.17

Year of the Dragon Expeditions Slide Show

Mike Libeck

China - The Unknown Kok Shal Tau

In the summer of 2000, Mike Libeck and his climbing partners headed out to Xinjiang, China, in search of cutting-edge climbing in the monstrous Kok Shal Tau/Tien Shan Mountains. Their specific destination was completely virgin territory, not only untouched by climbers but by all humans. Rumors, old military Russian maps, and instinct convinced Mike and his team to pursue this unknown endeavor. Join them in their journey through difficulties with the Chinese authorities, to experiences with many different cultures from Kyrgyz to Uygur, to exploring ancient tombs and sacred Buddhist caves. Mix that in with cutting-edge climbing on pristine granite, unexpected bivies at 18,000 ft., camels with an attitude, and ox penis for dinner, and you have a truly, fantastic adventure. This show will help benefit The Access Fund. Donations and/or new memberships will be encouraged, followed by a raffle of gear and clothing.

Slide show and all photography by: Mike Libeck

The meeting will be held on Monday, April 23rd, from 7:00 - 9:00 p.m. at the Los Olivos Senior Center, 2802 East Devonshire Avenue, one block north of Indian School on the east

There will be an admission fee of \$5.00 for non-AMC members.

THE PRESIDENT'S CORNER

I wanted to let the membership know about some of the things we are doing to try to protect the organization and its participants from a risk management perspective. At its February 12, 2001 Board Meeting the Board created a Risk Management Steering Group (RM Group). This group met on Wednesday, March 7, 2001.

The group recognized the work done by various individuals and groups in the past and thanked them for their groundwork. We discussed that part of our Best defense is the important role of safety, a feature the AMC is known for and continues to emphasize. However, the group also recognized that it is equally important to back-up safety procedures with prudent club policies for handling risk management concerns.

Risk Management will be overseen by the RM Group, a committee of standing committee chairs, and presided over by the President. Each standing Committee chair who has an on-going responsibility for an area that is related to risk issues, i.e., for now, T&S, Classification, Outings, and Mountaineering, will take on the additional role of monitoring risk management issues on a day to day basis. On at least an annual basis, the President will call this group of committee chairs together to share ideas and to see what work needs to be done for the following year. As each chair conducts his or her day to day business they will monitor their activities for risk management concerns. Issues that arise will be brought to the attention of the President. New policy concerns would be brought back to the RM Group on an "as-necessary" basis, additional meetings to be called by the President.

The main focus on the ensuing discussion was on identifying the process to be used for risk management, not on specific content of policies or proposals. The group agreed that it is an important part of the process to receive feedback from stakeholder groups, e.g., the Outing Leaders, during the formulation and evaluation of proposals.

A number of individuals with unique expertise related to risk management were identified, including club members Martin Combs and Tim Ward. These Individuals have agreed to help the club President and the RM Group deal with on-going policy formulation and review.

The group reviewed risk management policies already in place, those policies and materials that were under development, and those that had been discussed but never formulated. Consistent with the model of assigning risk management to existing committee chairs, each topic was discussed and assigned to a committee chair for further handling. The President asked to be kept informed of progress within each committee as the chairs integrate these topics.

Martin Combs handed out a model of risk management that is used by the Girl Scouts of America, which among other things, is designed to identify where a group is exposed to risk and to evaluate their volunteer leadership participation.

The work of the standing committee chairs and the coordinating function of this RM Group should help keep us aware of key issues as they arise. The following is a partial list of policies and procedures the AMC currently has in place. Assignments to committees are indicated for each.

Waiver for members -- Board
Safety training of leaders/instructors -- T&S
Newsletter disclaimer language for AMC outings, commercial offerings, and Bulletin Board activities -- Board
Leader application and approval process -- Classification
Negligence liability insurance -- Board
Alpine outing review and third party insurance requirements --Mountaineering
Mountaineering outing proposal review -- Mountaineering

There are a variety of other topics the RM Chairs will be working on over the coming year. Let's help them do this important work. And let's be safe out there...

Erik Filsinger
smorefil@aol.com

ANCHORS SCHOOL

This course is the next step for Basic School grads and will teach you to safely set anchors for top-roping. We will not cover lead climbing anchors in this class.

- First session: We will cover anchor components, anchor types, knots, hitches.
- Second session: We will cover basic anchor setups and characteristics.
- Third session: You will test yourself in "hands-on" anchor scenarios.
- Fourth session: This is an opportunity to practice your newly learned skills. We will have a climbing outing where you set the anchors under supervision of instructors and then we climb on your anchors.

WHEN & WHERE:

April 17, Tue. (6:00 pm - 9:30 pm): Dreamy Draw Park

April 19, Thu. (6:00 pm - 9:30 pm): Dreamy Draw Park

April 21, Sat. (8:00 am - 4:00 pm): North Scottsdale

April 22, Sun. (7:00 am - 4:00 pm): Location to be announced

To get to Dreamy Draw Park take the 51 "Squaw Peak" to Northern and turn East on Northern. This will take you directly into the Park. We will be at the big Ramada next to the parking lot. Directions to the other locations will be given out then.

EXPERIENCE REQUIRED: AMC Basic School Graduate or equivalent, to include knowledge of how to use prusiks, tie a figure-8-on-a-bight and a figure-8-on-a-follow-through, and make a girth hitch.

COST: \$50 (\$75 non-members). Register by sending a check payable to AMC Anchors School to Rogil Schroeter, 6519 W. Aire Libre, Glendale, AZ, 85306. Please pay before first class. Call Rogil Schroeter at 623-878-3914 for more information.

EQUIPMENT REQUIRED FOR THE CLASS WILL BE:

- 2 non-locking "D" or Oval carabiners
- 3 locking carabiners (one of which should be a parabiner)
- 1 rappel device (figure-8, Sticht plate, Trango Pyramid, Black Diamond ATC, etc.)
- 1 climbing harness
- 1 ea 4', 6', 10' 6mm prusiks (untied length)
- 2 5' slings (AKA runners, 1" tubular webbing, untied length)
- 2 10' slings (untied length)
- 2 20' slings (untied length)
- 1 helmet

(The slings are the only additional equipment needed over the Basic School requirements)

Students will be required to wear a helmet during the Saturday and Sunday sessions. We have helmets available if you do not have one.

This class is designed to teach you how to set anchors for your own climbing experience. In order to become independent and set your own anchors, you should start acquiring anchor gear. These purchases will be limited by how much money you want/have to spend and how much interest you have in climbing independently. The following gear is not required for the anchors class, but if you have some, you will be able to practice setting it in a controlled, learning environment during the class. All of the gear recommended below can be used for the lead class, and none of it will be wasted if you intend to set your own anchors. All gear should be marked prior to bringing it to class to prevent confusing it with other people's gear. If you don't know how to safely mark gear, check with an instructor before doing so to avoid weakening equipment due to improper marking.

OTHER GEAR that you may want to bring to anchors class:

- any pro you may have (hexes, stoppers, camming devices, Tri-cams, etc.)
- extra biners (regular D's, ovals, and lockers - stay away from specialty biners at this time)
- extra slings (perhaps four 5', two 15' slings, untied lengths)

AMC STARTS E-GROUP

Want to share information about climbs and equipment? Want to find a climbing partner for the weekend? Want to send out other "critical" information to your fellow AMC'ers?

Then join the AMC email group at <http://groups.yahoo.com/group/azmtclub>. Click "Join This Group" and follow the instructions. This group is open to any member of the AMC. What is this group, you ask? It is a way to send email to a whole group of people without entering each of their addresses. It is a great way to find out who wants to go to the "mine area" this weekend. Or to tell everyone about a great deal on gear on some website.

Also you can post your greatest climbing pictures, and bookmark your favorite climbing related websites. For more information go to the Yahoo groups website and check it out. See you in cyber space!

NOTE: Put enough information in your Yahoo ID Profile so we can identify you as a AMC member. Delivery options available: One email per post, One email per day includes all postings or read the postings on the web page.

Problems?? Contact Bill at billphxhome@earthlink.net for assistance.

—Tim Medlock and Bill Stinson

ANCHORS SCHOOL INFO.

The Anchors School instructor's meeting will be held at 6:30 pm Thursday, April 12th, at Sally & Dave Larimer's house, 5617 E. Windsor Ave., Scottsdale, 480-425-9689.

Drive to 56th St and Thomas or 56th St and Oak; 56th St does not go through from McDowell on the south. Closest freeway access is 52nd St. exit of 202; go north on 52nd St to Thomas or Oak, turn east to 56th St. From 56th St and Thomas, drive south to Windsor. From 56th St and Oak, drive north to Windsor. Turn east to 5617.

The Anchors School dates will be:

Tue, April 17 Anchors Class, 6:00-9:30 pm, Dreamy Draw Park

Thu, April 19 Anchors Class, 6:00-9:30 pm, Dreamy Draw Park

Sat, April 21 Anchors field day, 8:00 am - 4:00 pm, Little Granite Mountain

Sun, April 22 Anchors field day, 7:00 am - 4:00 pm, Promised Land (Prescott)

—Rogil Schroeter

Sierramar Adventures in 2001



**Join AMC member Jim Sumrall
with adventures in Nepal and
around the world.**

- Mar 18 – Mar 31 Springtime in the Annapur-
nas, with the Sierra Club
- Apr 10 – May 5 Around Manaslu
- May 8 – Jun 9 Annapurna Circuit – Summit
attempt on Chulu West
- Sep 14 – Sep 28 Iran Unveiled,
with the Sierra club
- Oct 6 – Nov 10 "The Home Town Tour" Badel
to Gokyo, the Everest region
- Nov 13 – Dec 15 Kanchenjunga Base Camp
- Dec 23 – Jan 5, Guatemala: Land of the Maya,
2002 with the Sierra Club

Jim Sumrall, Sierramar Adventures
Web: <http://www.jimsumrall.com>
E-mail: jim@jimsumrall.com
Tel: 480-894-9307 [888-241-2668]

AMC KICKS OFF MOUNTAINEERING SEMINAR SERIES

Over the past couple of years, Erik Filsinger has been increasing the club's exposure to alpine mountaineering activities through his Glacier Travel and Crevasse rescue classes. He's also accompanied many of us on ice climbing classes offered through Southwest Adventures in Durango, Colorado. Recently, he announced the club would start a series of seminars designed to bring those of us together who have an interest in mountaineering.

The first of these seminars was held at the Paradise Valley REI on March 1st. Erik presented a slide show to the 16 participants, and gave us an overview of the history of mountaineering throughout the world. We made introductions and shared our mountaineering experiences with the group, and learned that all experience levels were represented. We also discussed the direction the seminars would take in the future. Using *Mountaineering: The Freedom of the Hills* as a guide, the AMC will schedule monthly seminars covering such topics as clothing and equipment for mountaineering, expedition planning, avalanche safety, snow shelters and winter camping, leadership and group dynamics, and physical and psychological training.

So what is mountaineering? Loosely defined, it is climbing a mountain from its base to its summit and back. In order to do that safely, and depending on the type of mountain, one would need to have experience in rock climbing, glacier travel, ice climbing, backcountry medicine, high altitude issues, and any number of other skills. In conjunction with the AMC's regular classes (rock climbing, glacier travel and crevasse rescue, map and compass), the ice climbing classes in Durango, and the annual (I hope) backcountry emergency care class, these seminars will go a long way towards giving club members a solid foundation in mountaineering.

On Thursday, April 5th at 6:30 at the P.V. REI, the AMC will hold the second meeting in this series. April's seminar will be a discussion on clothing and equipment for mountaineering. The focus will be on cold-weather climbing at moderately high altitudes, but can be expanded based on other member's interests and experiences. There will be a number of items for show-and-tell, and anyone with an interesting piece of clothing or equipment is encouraged to bring it along. Time permitting, we will discuss

the pros and cons of guided climbing, drawing on the experiences of members who have been on guided climbs throughout the world. This would be a great opportunity for anyone who is interested in the sport to pick up some basic information, and a good opportunity for those with experience to share their knowledge with the group.

—Jeff & Susan Hatfield

SPIFFING UP QUEEN CREEK

AMCers will have a chance to scope out the headquarters site and some of the contest area of this year's Phoenix Bouldering Contest if they attend the semi-annual Clean and Climb day on March 31st.

That is, they can if they still have extra energy after their hour of picking up trash along Highway 60 and then testing themselves on the routes rigged for them by AMC leaders. The PBC people can use extra help getting ready for the following week's event — clearing trails and building trail cairns, hauling ropes and signs, etc.

Meet at the Mesa Community College parking lot at 8:00 a.m. or gather at 9:00 at the Oak Flat turnoff on the hill crest east of Superior. Leaders will rig climbs while the crew preens the roadsides.

For info call Charlene Todd at 480-917-5354.

SNOW TRAVEL & CREVASSE RESCUE

If there is one skill which most Arizonans do not possess, it is understanding the dangers of traveling in snowy mountains and knowing how to get out of trouble once in it.

AMC is rectifying this woeful lack with a snow travel and crevasse rescue class which will be taught April 28th and 29th in the Flagstaff area. It will cover use of ice axe, crampons, roped travel, avalanche hazards, using pickets, flukes, snow screws and ice and snow bollards for anchors, plus how to get someone out of a crevasse if he or she falls in.

The one evening plus two weekend days class costs \$50 and is prerequisite to any of the Colorado ice climbing outings. Enrollees must have taken the AMC Basic class and Anchors class. Those who have previously taken the class are welcome to attend at no charge if they will assist in teaching.

Information — Erik Filsinger at 602-906-1186.

ED. NEEDS A LAW CLERK

The Court (House) has adjourned and the verdict is a most enjoyable, memorable, and successful outing. Seven AMCers braved threatening skies and were rewarded with a full day of multi-pitch climbing.

Everyone got a chance to lead as we worked our way up this 1,000+ adventure-land of rock. The teamwork going up was duplicated as we rapped the way down.

Participants — Chris, Forest, Jutta, Sheri, Tu and me.

Observations:

1. Short approach
2. Leads tend to be runout.
3. Good bolts at belay anchors (if you find them.)
4. Minimum 6 roped pitches to summit
5. Ever-present rock fall danger.

Tu was ambushed by a wild band of jumping cholla, but Seth scared them off before they could inflict serious damage.

—Anon (because Ed lost name of author)

CLIMBER TALKS; SIGNS BOOKS

Shelley Presson-Dunbar is a professional competitive sport climber, formerly ranked second in the U.S. She has written "Climbing: A Woman's Guide" distilled from her nearly two decades of experience. She will present a question and answer clinic and signing at both area REI stores — Paradise Valley on April 9th and Tempe on the 10th. The events run from 7 to 8:30 pm and are free.

Even though her new book focuses on women on rock, men can learn a lot from this charismatic climber. —Kim

Encouraging Note Dept.

The Park Service's proposed management plan for Rocky Mtn. NP contains bolting and aid rules similar to those proposed by a majority of the USFS wilderness area climbing rules study committee, according to the American Alpine Club.

The Forest Service decision (as all other new Federal rulemaking) had been put on hold by the Bush administration for two months. National Parks, at least, seems not to have been stampeded by the more doctrinaire wilderness purists.

SHOW YOUR TRUE COLORS!



AzMountaineeringClub.org

Identify yourself as one of that daring band of brothers and sisters who choose the hard way when they challenge the giddy heights. No back-side walk-ups for you...

You are a climber!

Proclaim that wonderful fact for all the world to see with your very own official AMC window decal. It is simple, tasteful, colorful. And it bespeaks of the Salathe Wall — or at very least the Praying Monk. If mounted on your car's rear window other AMC'ers will give you casual, comradely waves while the general populace will gaze with admiration.

Try one and see if this is not so. They are available from AMC's T-shirt lady, Wendy Gaynor, at meetings. Price — \$2 for one or 3 for \$5.

PARTY TIME ON THE ROCKS

AMC'ers traditionally make up a good portion of the volunteer staff at the Phoenix Bouldering Contest for a very simple reason — the thing is a blast! Great deals from the vendors. Climbing illuminati doing "your" problem. Music and freebies from the stage. Free camping. Beer. April 6, 7 and 8. Don't miss it.

SCREE



Basic School students Gisela Kluwin and Shon Williams rest amid poppies as they wait to tackle their next rock-climbing problem at the Opium Den

Neat place, huh?

If anyone didn't realize it before, anyone who saw the land being sought for preservation around Little Granite Mountain should now recognize its recreation potential — and its pure unadulterated beauty. OK, its beauty may be slightly adulterated by power lines and tracks and such, but it was still a terrific place to be on a sunny weekend in March.

Last month's newsletter suggested that people write to Gov. Jane Hull, State Land Commissioner Michael Anable, and to the Republic and Tribune commending this area's recreational benefits. I hereby renew this suggestion. As stated last month, Scottsdale has made an API application to the State Land Department to classify 16,000 acres (including Little Granite and the Opium Den rocks) as suitable for conservation. The State Land Dept. Advisory Commission has already met but additional public support couldn't hurt. Write to:

Governor Jane Dee Hull
State Capitol Building
1700 W. Washington St.
Phoenix, AZ 85007

Commissioner Michael Anable
State Land Department
1616 W. Adams St.
Phoenix, AZ 85007

Because of unforeseeable and untoward events such as elderly relatives keeling over I was unable to answer several inquiries about what our newsletter's "editorial requirements" might be. Given recent newsletters their puzzlement is understandable. Requirements?

I prefer to receive submissions on paper at my home address or in an electronic format that my computer can digest. Beyond that I'm easy.

To elucidate a bit -- roughly 400 to 500 words will fill one newsletter column; 800 to 1,000 will fill a page. A one-column photo occupies the space of ca. 150-200 words. I have printed accounts that ran as long as six pages in the past. I am also fully prepared to print a couplet, if one arrives. So far none has, which is a pity. I am also braced for pantuns, triolets, haiku and even sonnets if they show up on my "desk." Pen and ink, pencil and charcoal drawings are welcome, too.

Some of the best and brightest wordsmithing I have encountered came from recent basic school graduates describing graduation climbs or outings to other areas as they experienced them for the first time. The excitement and novelty really comes through.

Of course, there are those reliable, conscientious stalwarts who, after making all arrangements and actually leading an outing, take the time and trouble to report on their trip, telling who was there, passing out praise when deserved, and giving the flavor of the climbs for the edification of those who have not yet seen the place. With our twice-yearly basic schools, there is always an appreciative audience for these reports. You know who you are — thank you, thank you, Thank You!

The communication process is in flux. Any fool can see that. Yes, we still speak words and use gestures (liminal and sub) and pauses and our attentiveness or lack of it to convey — or hide — meaning. But even the presumably objective *printed* word now runs in channels that did not exist a few years ago.

For now the "hard copy" newsletter will continue to exist despite the club's venture into cyberspace. But a milestone or ridge-crest (or something) has been reached this month as AMC inaugurates its new e-message board described elsewhere in this issue.

One advantage — it is not necessary to wait for a planned outing. Check the board and see who feels like doing what this week end... How to join? Go to <<http://groups.yahoo.com/group/azmtclub>>

(Continued on page 11)

- May 3 **AMC Mountaineering Seminar**. Expedition Planning. At Paradise Valley REI at 6:30 p.m. Jim Kistler to lead discussion on expedition planning and camping equipment. Contact Erik Filsinger at 602-906-1186 for information or just show up.
- May 25-28 **Indian Creek** Superb crack climbing with a good range of difficulty. Richard Horst 602-953-9198.
- Sep 3 **Lead School Instructor Meeting**. Mick Strole 602-788-4031.
- Sep 18 **Lead School**. Sep 18,19,20,22,23. \$50, \$75 non-members. Rogil 623-878-3914.
- Sep 9 **Grand Canyon Cleanup**. Gary Youngblood 602-508-9696.
- Oct 11 **Basic Climbing School Instructor Meeting**. Sally Larimer 480-425-9689.
- Oct 16 **Basic Climbing School**. Oct 16,18,20,21,23,25,27. \$150. Rogil 623-878-3914.
- Nov 1 **Anchors School Instructor Meeting**. Tom Conner 480-897-7623.
- Nov 3 **Queen Creek Cleanup and Climb**. Charlene Todd 480-917-5354.
- Nov 6 **Anchors School**. Nov 6,8,10,11. \$50, \$75 non-members. Rogil 623-878-3914.
- Nov 21 **J-Tree Thanksgiving**. Nov 21-25.

*Group outings: The campsite, where possible, is reserved by the AMC. There is no designated leader, although there may be a leader to work with non-leaders (call to find out). Call to find car-poolers. Parking is first-come, first-served in some cases
 To request outings: Call Outings Chairperson Bruce McHenry 602-952-1379. To cancel: Please call the outing leader to cancel as soon as possible: there may be a waiting list. Also, the leader will know not to wait for you on outing day.

BILLBOARD — Other Scheduled Events

Outings listed in these sections are not AMC sanctioned outings. Any AMC member can list an event he or she is planning and which is open to other AMC members. The member does not have to be an approved AMC Outing Leader. If you wish to participate you should be physically and mentally prepared and equipped with the appropriate gear and should contact the member planning the outing. You are responsible for your own safety, not the person leading the outing. You should always be aware of the risks involved in outdoor activities and conduct yourself accordingly.

- Tuesdays **North Mountain Hikes** Evening. Rogil Schroeter, (623) 878-3914
- Wednesdays **Arizona Climbing Center** - 6:00 p.m., Rogil Schroeter, (623) 878-3914.
Contact Rogil: 623-878-3914 or Rogil.Schroeter@Honeywell.com
- Apr 6-8 **Phoenix Bouldering Contest** Sue Goins for Info. 480-821-0535

COMMERCIALLY PROVIDED TRAINING AND EVENTS

The events listed below are provided by commercial outfitters for the benefit of AMC members These are not AMC Outings, nor are they led by AMC Outing Leaders, though they may be open only to AMC members. The commercial outfitter is solely responsible for all aspects of the outing, not AMC. While, in most cases, an AMC member may provide a service by AM by collecting names of prospective participants and handling the logistics for out-of-town events, participants will sign up directly with the commercial outfitter.

AMC CALENDAR OF EVENTS

Participation in AMC outings requires club membership. Outings vary in degree of danger. When you participate in an outing you should be both physically and mentally prepared and equipped with the appropriate gear. You should always be aware of the risks involved in outdoor activities and conduct yourselves accordingly. The outing leader is not responsible for your safety, you are. Please contact the outing leader before going on an outing, discussing your capabilities with the outing leader. You must be over 18 years of age to participate, or must be accompanied by a parent or responsible adult, and obtain prior consent from the outing leader. Those accompanying minors are responsible for the minor's safety.

WHEN WHERE & WHAT & WHO

- Mar 31 **Queen Creek Cleanup and Climb.** Charlene Todd 480-917-5354.
- April 5 **Alpine Seminar Series** -- equipment. At Paradise Valley REI at 6:30 p.m. Jeff Hatfield to lead discussion on personal and climbing clothing and equipment. Erik Filsinger at 602-906-1186 for information or just show up.
- Apr 6,7 **Phoenix Bouldering Competition** Queen Creek (Not an official AMC event).
- Apr 12 **Anchor School Instructor Meeting.** Tom Conner 480-897-7623
- Apr 14 **Crown King.** Back for another blast on Bradshaw's granite. 5.9+. Limit 12. David Larimer. 480-425-9689.
- Apr 17 **Anchors School** Apr 17, 19, 21, 22. \$50, \$75 non-members. Rogil Schroeter 623-878-3914
- Apr 23 **Regular AMC Meeting** Mike Libeck on climbing unknown far-western Chinese peak. Access fund benefit
- Apr 25 **Snow/Glacier Evening Class** Erik Filsinger 602-906-1186.
- Apr 28 **Jacuzzi Spires** Marvelous multi-pitch near New River. 5.6-7. Restricted to recent Basic School Graduates who didn't get a multi-pitch climb. Limit 6. Scott Hoffman. 623-5890-8909.
- Apr 28 **Beardsley Boulder Pile** Cool climbing and climbing right in town. Meet at 9:00 a.m. at the TaCO Bell at 19th Ave and Deer Valley Rd. Chris Query 480-897-0900.
- Apr 28-29 **AMC Snow Skills Class** in Flagstaff area. for everyone from beginners to experienced glacier travelers — valuable as new stuff or a refresher. Erik Filsinger 602-906-1186 for signup.. \$50. Basic and AARS Schools a prerequisite. Limited enrollment.

AMC OUTING LEADERS

Requirements for becoming a leader: take the basic, AARS and Lead classes (or equivalents), be a member for at least one year, complete a basic first aid and CPR class (8 hours or more), and be approved for leadership by at least five current leaders through formal application process and by the Board of Directors. Contact Jeff Nagel at (602) 318-9538.

Bill Berkley.....	480-945-4346
Sally Borg Larimer...	480-425-9689
Tom Conner.....	480-897-7263
John Ficker.....	602-867-1487
Eric Filsinger.....	602-906-1186
Sue Goins.....	480-821-0535
Scott Hoffman.....	623-580-8909
Richard Horst.....	602-953-9198
Kevin Kozup.....	480-460-5940

David Larimer.....	480-425-9689
Tim Medlock.....	719-494-1171
Jeff Nagel.....	602-318-9538
Paul Norberg.....	602-808-9244
Paul Paonessa.....	602-493-7356
Chris Query.....	480-897-0900
Brad Sanders.....	480-961-3674
Tim Schneider.....	480-497-8377
Rogil Schroeter.....	623-878-3914

Wayne Schroeter..	623-878-3914
Jef Sloat.....	602-843-2490
Bill Stinson.....	602-547-2560
Mick Strole.....	602-788-4031
Frank Vers.....	480-947-9435
Gary Youngblood.	602-508-9696

APRIL 2001

AMC CALENDAR OF EVENTS

Sunday	Monday	Tuesday	Wednesday	Thursday	Friday	Saturday																																																																																																		
1	2	3 CAMRA	4 Sunrise 6.12 Sunset 6.52 Moonset 4:15A	5 Alpine Seminar	6 Phoenix Bouldering Contest (not an offic'l AMC Outing)	7 Full Moon Phoenix Bouldering Contest -- not AMC outing																																																																																																		
8	9 AMC Board Meeting	10	11 Sunrise 6:03 Sunset 6:57 Moonset 8:37A	12 Anchors Instr Meet	13	14 Crown King																																																																																																		
15 Last Quarter	16	17 Anchors School	18 Sunrise 5.54 Sunset 7:02 Moonrise 3:34A	19 Anchors School	20	21 Anchors School																																																																																																		
22 Anchors School	23 AMC REG. MTG.— Mike Lebeckl In China and Access Raffle New Moon	24	25 Snow & Crevasse Class (Pnx) Sunrise 5:46 Sunset 7:07 Moonset 9:28P	26	27	28 Beardsley Boulders, Jacuzzi Spire, Crevasse/ Snow School (Flag)																																																																																																		
29 Snow & Crevasse Rescue School (Flag)	30 First Quarter	<table border="1" style="margin: auto;"> <tr> <th colspan="7">Mar 2001</th> </tr> <tr> <th>S</th><th>M</th><th>T</th><th>W</th><th>T</th><th>F</th><th>S</th> </tr> <tr> <td></td><td></td><td></td><td></td><td>1</td><td>2</td><td>3</td> </tr> <tr> <td>4</td><td>5</td><td>6</td><td>7</td><td>8</td><td>9</td><td>10</td> </tr> <tr> <td>11</td><td>12</td><td>13</td><td>14</td><td>15</td><td>16</td><td>17</td> </tr> <tr> <td>18</td><td>19</td><td>20</td><td>21</td><td>22</td><td>23</td><td>24</td> </tr> <tr> <td>25</td><td>26</td><td>27</td><td>28</td><td>29</td><td>30</td><td>31</td> </tr> </table> <table border="1" style="margin: auto;"> <tr> <th colspan="7">May 2001</th> </tr> <tr> <th>S</th><th>M</th><th>T</th><th>W</th><th>T</th><th>F</th><th>S</th> </tr> <tr> <td></td><td></td><td></td><td></td><td>1</td><td>2</td><td>3</td> </tr> <tr> <td>4</td><td>5</td><td>6</td><td>7</td><td>8</td><td>9</td><td>10</td> </tr> <tr> <td>11</td><td>12</td><td>13</td><td>14</td><td>15</td><td>16</td><td>17</td> </tr> <tr> <td>18</td><td>19</td><td>20</td><td>21</td><td>22</td><td>23</td><td>24</td> </tr> <tr> <td>25</td><td>26</td><td>27</td><td>28</td><td>29</td><td>30</td><td>31</td> </tr> </table>					Mar 2001							S	M	T	W	T	F	S					1	2	3	4	5	6	7	8	9	10	11	12	13	14	15	16	17	18	19	20	21	22	23	24	25	26	27	28	29	30	31	May 2001							S	M	T	W	T	F	S					1	2	3	4	5	6	7	8	9	10	11	12	13	14	15	16	17	18	19	20	21	22	23	24	25	26	27	28	29	30	31
Mar 2001																																																																																																								
S	M	T	W	T	F	S																																																																																																		
				1	2	3																																																																																																		
4	5	6	7	8	9	10																																																																																																		
11	12	13	14	15	16	17																																																																																																		
18	19	20	21	22	23	24																																																																																																		
25	26	27	28	29	30	31																																																																																																		
May 2001																																																																																																								
S	M	T	W	T	F	S																																																																																																		
				1	2	3																																																																																																		
4	5	6	7	8	9	10																																																																																																		
11	12	13	14	15	16	17																																																																																																		
18	19	20	21	22	23	24																																																																																																		
25	26	27	28	29	30	31																																																																																																		

ARIZONA MOUNTAINEERING CLUB

P. O. BOX 1695

PHOENIX, ARIZONA 85001-1695

