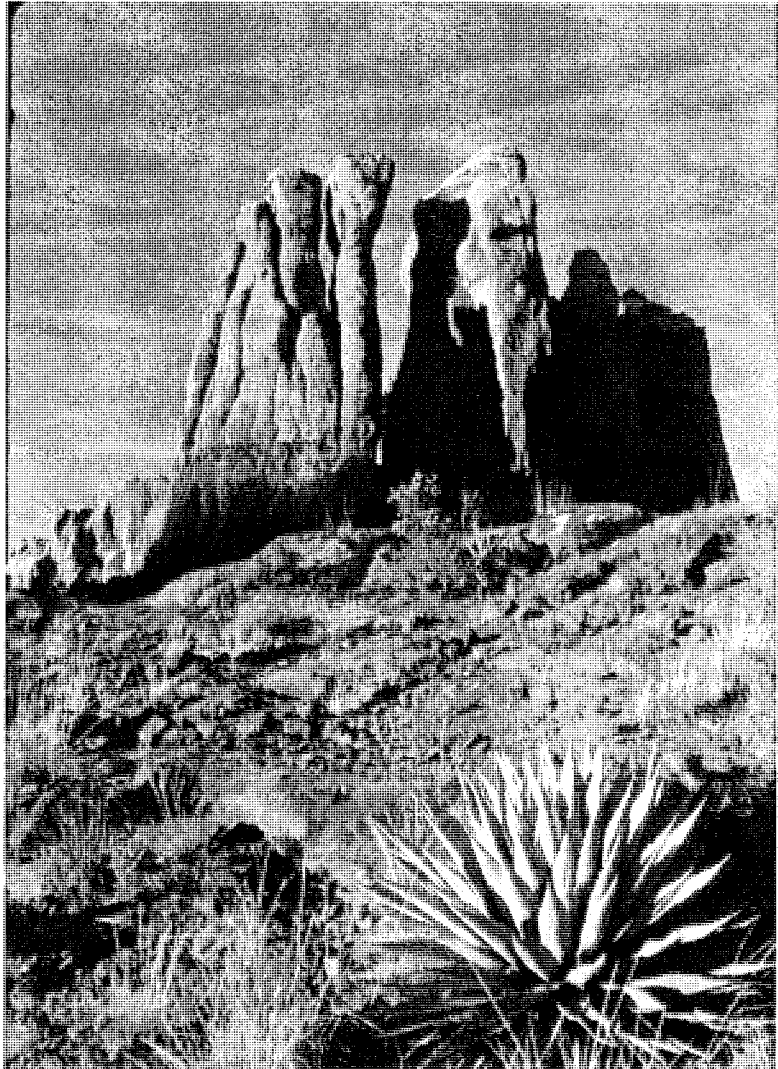


OCTOBER 2004

ARIZONA MOUNTAINEER

The Mace at Sedona, one of AMC's traditional fall climbs and one of the nation's fifty classics. . Frank Vers will again lead it on Oct 23rd. Photo by Wayne Schroeter.



The Arizona Mountaineering Club

Meetings: The AMC normally meets the 4th Mon. each month (Nov. & Dec. meetings are usually the 3rd Mon.) at 7:00 pm at: Los Olivos Senior Center, 2802 E. Devonshire Ave. Phoenix, Az

Oct meeting at 3819 N. 27th Ave (New Bethel church) on 3rd Monday, 18 Oct.

Board Meetings: Board meetings are open to all members and are held two Mondays prior to the Club meeting at Los Olivos Center.

Dues: Dues cover January through December. A single membership is \$25.00 per year; \$30.00 for a family. Those joining after June 30 pay \$13 or \$15. Members joining after October 31 who pay for a full year will have dues credited through the end of the following year. Dues must be sent to:

AMC Membership Committee
6519 W. Aire Libre Ave.
Glendale, AZ 85306

Schools: The AMC conducts several rock climbing, mountaineering and other outdoor skills schools each year. Browse the AMC website or email info@azmountaineeringclub.org for information on schedules and classes.

For More Information:

Call ... (623) 878-2485

Email info@azmountaineeringclub.org
president@azmountaineeringclub.org
board@azmountaineeringclub.org

Website www.azmountaineeringclub.org

Mail ... Arizona Mountaineering Club
4340 E. Indian School Rd., Ste 21-164
Phoenix, AZ 85018 (1004)

Board of Directors:

President Bruce McHenry 602-952-1379
Vice-President..... Jutta Ulrich..... 602-234-3579
Secretary John Keedy..... 623-412-1452
Treasurer..... Clay Vollmer 602-595-7266
Director 2-year Scott Hoffman 623-580-8909
Director 2-year Wayne Schroeter... 602-402-1631
Director 1-year Rich Kocher..... 480-966-5568
Director 1-year Erik Filsinger 480-314-1089
Director 1-year Lynn Readicker..... 480-970-1991

Committees:

Archivist Jef Sloat..... 602-316-1899
Classification..... David Larimer 480-425-9689
Elections Dave Van Hook 602-790-6283
Equipment Rental Erik Filsinger 480-314-1089
Email Jeff Hatfield 480-897-1750
Land Advocacy ... Erik Filsinger..... 480-314-1089
Librarian Richard Kocher.... 480-966-5568
Membership Rogil Schroeter.... 623-512-8465
Mountaineering ... Erik Filsinger 480-314-1089
Newsletter Wally Vegors..... 602-246-9341
Outings Monica Miller..... 623-362-0456
Programs..... Sheri Kenley..... 602-242-0504
Training & Schools Wayne Schroeter . 602-402-1631
 Basic Class Sally Larimer 480-425-9689
 Anchors Class.. Tom Conner..... 480-897-7623
 Lead Class..... Wayne Schroeter... 602-402-1631
T-shirts..... Sally Larimer 480-425-9689
WebSite Kirra
webadmin@azmountaineeringclub.org

The AMC Access Committee: The Committee works by itself and with the national Access Fund to maintain public access to climbing areas. If you know of areas that are threatened with closures or climbing restrictions, please notify the Access Fund representative Jutta Ulrich at (602) 234-3579.

The Access Fund: This is a national, non-profit, climber's organization that works to maintain access to climbing areas nationwide. Climbers can join The Access Fund by mailing an annual, tax-deductible donation of \$35 or more to: The Access Fund, P.O. Box 17010, Boulder, CO 80308, or calling 888-8MEMBER or giving it to the AMC Club Treasurer to be sent to The Access Fund in your name. A donation of \$35 or more is needed to receive *Vertical Times*, The Access Fund newsletter. One can also join electronically at https://www.accessfund.org/secure/joinnow/join_indiv.php

This Month in the AMC

- 2.....Who does what, addresses and numbers
- 3.....Birthdays; Index
- 4.....Board Meeting Minutes, New Members
- 5.....Discount Directory; Treasurer's Report; Rentals
- 6.....Jared McMillan Red Rocks Program
- 7,8...Grand Canyon Over The Rim Crag Dat
- 9.....Climbs in Canada and France
- 11....Anchors School Plans
- 12....Sneffles Trip Report
- 13....Lead School Plans
- 14....Halloween at Queen Creek
- 15....Yahoo; Pix
- 17....Basic School Plans
- 18....Access Adopt-a-Crag DayS
- 19....Queen Creek Report
- 20....E.F.Stories; Outing Leaders, Mace Photo
- 21....Outings, Continued from 22
- 23.... Calendar

Newsletter

The *Arizona Mountaineer* is published monthly by the AMC. Members are encouraged to submit articles and photos about their climbing- or mountaineering-related activities. Submit items for publication (subject to approval) to AMC Editor, 6151 N. 8th Ave., Phoenix, AZ 85013 or through email to azmountaineer@azmountaineeringclub.org. Prints are preferred over slides. Digital photos should preferably be in JPG format and at least 300 dpi. Articles can be in any standard word processing format. For more info call the editor at (602) 246-9341.

Advertising in the *Arizona Mountaineer* is accepted, subject to approval, at the following rates. Personal ads are free to members. Business ads are \$5.00 for a business card, \$10.00 for half page, \$20.00 for full page, and \$25.00 for inserts.

Nov Deadline: 15 Oct 2004

NOT STUFF!!

**Don't Forget Grand Canyon
Over-The-Rim Cleanup is
AMC's Adopt-a-Crag Project
This Year. Sept. 25 & 26**

**Lead School is Sep 28-30
and Oct 2-3**

**Basic Classes Need
Instructors and Grad Climb
Leaders. Meet on 6th;
Classes begin on 12th.**

Wheee! We're Off!!

Library

You must be an AMC member; i. e., your name must be on the most current membership list.

The circulation period is one month. Materials are due at the next general club meeting. The overdue fine is \$2 per title per month. Please contact the librarian if unable to return your books and tapes.

The circulation limit is three titles per person. One of these may be a videotape, for which a \$50 deposit is required. Each guidebook requires a \$25 deposit. (Note — Library is kaput during Los Olivos expansion.)

OCTOBER BIRTHDAYS

Bill Demlong 1, Deke Joralmon 2, Kari Carlisle 4, Ken Isaacson 4, Tracy Dugan 6, ThanhVan Tran 6, Kim Petersen 7, George Vadasz 7, Samantha Hicks 9, Heather Ryan 9, Kevin Stevens 9, Mark Trisler 9, Lori Horst 10, Kathi Reichert 10, Daniel Romero 10, Abe Mirich 11, Rogil Schroeter 12, Bob Box 14, Dave Lemons 14, Karl Anderson 15, Greg Opland 15, Darrell Foster 18, Kevin Kriegel 18, Elizabeth Dunlop 20, Jeffry Nagel 20, David Van Hook 23, Michael Jacobson 25, Julian Blum 28, Mitchell Keast 28, Barb Berkley 29, Jeff Hatfield 29, Odelte Deus 30

Minutes of the AMC Board Meeting: 7 Sep 2004

Members Present – Erik Filsinger, John Keedy, Rich Kocher, Wayne Schroeter, Jutta Ulrich, Clay Vollmer

Committee Chairs Present – Sheri Kenly, David Van Hook, Wally Vegors

Meeting called to order by Vice President Jutta Ulrich at 7 PM.

Minutes of August meeting approved as published.

Financial Secretary's Report approved with correction of one check that was made out for an incorrect amount. Clay will reissue a check for the correct amount after receipt of the incorrect check.

Presidential Updates

Membership is now 387.

Job Descriptions – All are turned in except Vice President, which is done but not submitted. Clay stated that he would like to add a checklist to the Treasurer's Job Description. Both should be completed by next meeting.

Membership Survey – Discussion held on survey. Wally has the survey partially done. Sherrie expressed interest in the survey. Motion made seconded and carried to add Sherrie Kenly to the Committee. Her role will be in analyzing the survey and compiling results.

Old Business

Newsletter – Wally stated it will be larger than usual and may require additional postage. Monica is writing article on Grand Canyon Cleanup.

Adopt-a-Crag - October 30 discussed. Queen Creek and Atlantas areas considered. REI is doing Beardsley Boulders area the afternoon of October 30 after their Garage Sale. Motion made, seconded and carried to designate our Grand Canyon Clean-up as our Adopt-a-Crag event.

Digital Projector – Sheri reposted that equipment will cost \$1200.00 or more. After discussion, motion made, seconded and carried to authorize Sherrie Kenly to purchase a digital projector and small P.A. System. Purchase to be as high of quality equipment as possible for up to \$1500.00

Sheri states she has asked Dief to do a program for September Meeting. David and Sheri will work on a better site for the meeting, as the library is not large enough.

New Business

Budget – All Committee Chairs are asked to forward budget requests to Clay or Bruce ASAP.

Web Site – All documents are not on Web Site as yet. Kirra is working.

Insurance – Liability policy is due. We should expect significant increase.

Outing Leader Meeting – Thursday Sept 9 at Jutta's.

Rental Gear – Erik received gear from Gary Gerden who moved to PA. Erik stated that most of the equipment is in sad shape. Motion made, seconded and carried to authorize Erik to sell or dispose of all equipment except the good Alpine equipment.

Leader Requests – The Club has received a formal request from Robert England to become the new AARS Instructor replacing Tom Connors who is stepping down. Request to be considered by T & S Committee.

Alpine Seminar – Erik is starting the Alpine Seminar again. They will be held on the second Wednesday of the month at Pyle Library.

Alpine Documents – Erik has compiled alpine related documents for the web site. Suggestion made to hold off on further action until the current documents in process are published on the web site.

Meeting place – Los Olivos will probably not be usable by us until at least November or December. **October Meeting will be at New Bethel Church, 3819 N. 27th Ave., one-fourth block south of Indian School and one block west of I-17.**

October Board Meeting to be at Monastery 7 PM October 11.

Meeting adjourned at 9 PM

NEW MEMBERS

Bob Box
Camden Box
Suzanne Cook
Odelte Denis
David Dopilka
James Duggan
Joseph Ferrari
Terrance Macaleer
Peter Neubauer
Susan Pitts
Jennifer Urbina
Cassandra Velasquez
Francisco Velasquez
Francisco Velasquez
Joshua Velasquez

Discount Directory

Treasurer's Report

The following merchants currently offer a discount to AMC members:

Arizona Hiking Shack—11645 N. Cave Creek Rd., Phoenix, AZ 85020, (602) 944-7723. Show your AMC membership card and get a 15% discount.

Az on the Rocks Gym — 16447 N. 91st St., Scottsdale, Az.85260. 480-502-9777. Gym membership 10% off for AMC members.

OvertheCrux —2655 W. Guadalupe, #4, Mesa, Az 85202. 480-890-0997. 15% off to AMC members.

Solid Rock Gym — 23620 N. 20th Dr, Phoenix, Az 85027 (623) 587-7625 Gym membership 10% off for AMC members.

Rental Equipment

EQUIPMENT	Qty	\$Dep	1-3day	4-7day
MSR Alpine snowshoes	5	32	10	16
Ice Crampons	5	26	8	13
Ice axes (70 cm)	6	16	5	8
Ice axes (90 cm)	5	14	5	7
Snow shovel	1	8	3	4
PortaLedge	1	100	30	50
Climbing shoes	Various sizes...Call			

Equipment Rental Guideline: Your name must be on the most current membership list. Deposit required; varies by item; generally \$20-\$50. The two-personal-checks system works best. Advance reservation suggested. If not using the reserved equipment, please call and cancel. Call Linda Locke at (602) 997-4235 for shoes. For everything else, call Erik Filsinger at 480-314-1089.

Statement of Operations

01Jan 04 Thru 7 Sep 04

Category Description	Amount
INCOME	
Advertising.....	160.00
Decals	8.00
Dues	7,072.50
Merchandise (Tee Shirts & Etc).....	490.00
Mountaineering Schools	400.00
Program Income	101.00
Rental Income (incl shoes).....	135.00
T-Shirts	490.00
Training	9,965.00
Uncategorized	60.00
TOTAL INCOME	18,391.50

EXPENSES

Administration.....	616.50
Bouldering Contest.....	300.00
Capital Exp (mntnrg)	206.14
Classification.....	537.00
Equipment Maint.....	63.00
Insurance.....	350.00
Library	40.00
Merchandise Exp.....	0.00
Mountaineering	70.57
Newsletter	2,008.99
Outings.....	100.00
Programs	3,439.15
Service/Bank Charge	54.06
Training	6,139.07

TOTAL EXPENSES 13,924.48

OVERALL FOR YEAR TO DATE 4,467.02

ACCOUNT BALANCES (7 Sep 04)

CD Account.....	5,235.71
Savings	1,668.32
Checking	13,057.32

TOTAL CASH ASSETS 19,961.73
Other Assets (Library and gear) 5,967.75

OVERALL TOTAL..... 25,929.48

Get Real at Red Rocks with Jared McMillan

5.14 climber and talented photographer, Jared McMillan will present Climbing at Red Rocks and other areas around Las Vegas, Nevada. Only a five hour drive from Phoenix, this beautiful area offers challenging climbs for the beginner on through advanced climbers. Whether you prefer to climb trad or sport, this show will leave you ready for a real trip.

Jared was born and raised in Minnesota. He visited Boulder after high school and was instantly in love with the mountains. Entranced by rock climbers in Eldorado Canyon, he tried it and was hooked. Selling all his belongings and moving into his car, Jared became a professional climber and has been for the past six years. The sport has taken him to numerous world-class climbing areas around the country and in Europe. He has redpointed routes to 5.14b and on-sighted as hard as 13.
a.



Jared is the co-author, with Roxana Brock, of the book *Red Rock, A Climber's Guide*, to be out in Spring 2005. Jared will be bringing swag from his sponsors to raffle off to benefit our biggest climbing area, Queen Creek. His website is tybphotography.com

Programs has the tickets; you bring the dollars — \$3 each or 2 for \$5.

NEW MEETING LOCATION

(to provide more space for the show)

New Bethel Church at 3819 N. 27th Avenue.

It is one-fourth block south of Indian School Road on the east side of 27th Ave.

7:00 p.m. October 18th.

16th Annual Grand Canyon Over-the-Rim Cleanup : AMC's Access Fund "Adopt-a-Crag" Event for 2004

Time again for the annual Grand Canyon Over-the-Rim Cleanup! For those new to this event, we have been rappelling over the side of the South Rim's steep limestone cliffs for 15 straight years, searching for trash deposited by tourists and wind. We have scoured the slopes below Mather Point and spruced up the view from the ice cream store at Bright Angel Lodge. We have appeared in numerous home movies we have never seen and entertained scores of innocents who ask, "Did you climb all the way from the bottom?" (We always answer, "Yes!") Along the way, we have maintained a perfect safety record, partied at pristine Shoshone Point, and climbed the next day in the Kaibab limestone amphitheaters below the Rim. Come out and join us again this year.

The Cleanup is scheduled for Saturday September 25th. You must be an AMC Club member trained in the proper rappel technique and in prusiking to go over the side; non-members can help at the top.

Technique seminar and planning meeting:

We will be holding a technique seminar at 6:00 pm on Tuesday September 21st, at Dreamy Draw Park.

This is mandatory for anyone who has not participated in the cleanup before. Old-timers are welcome to come for a refresher. We won't be teaching any of these techniques on-site at the Canyon. Please bring all the technical equipment listed below to the seminar.

Technical - Personal equipment needed for the Cleanup:

Helmet—mandatory

- 3 prusiks (4',6',10')
- 1 climbing harness
- 1 rappel device
- 3 locking carabiners (harness biners)
- 1 5-foot or 6-foot tied sling (depending on arm length)
- 2 20' slings and 2 lockers (for anchors)
- 6 extra regular biners for fire hose

- Hiking boots (no sandals or open-toed shoes)—mandatory
- Gloves—mandatory
- Long pants, long-sleeved shirt
- Sunscreen, lip balm
- Water & lunch
- Whistle—optional (just in case)

Club equipment provided the day of the Cleanup:

- pieces of fire hose
- short prusiks
- 1 rope bag

Schedule:

Friday, Sep 24: Camp at the group site or public camp ground

Saturday, Sep 25:

8:00 am—Mandatory meeting at Mather Point we will sign waivers)

9:00 am—disperse to cleanup areas

4:00 pm—wrap up, shower, and get ready for barbecue

5:00 pm—meet at Shoshone Point, or caravan from campsite

Sunday, Sep 26:

9:00 am—meet at parking lot by railroad station for climbing outing (helmets required)

3:00 pm—head back to Phoenix

Entrance to the Park:

If you arrive at the entrance station when it is open, tell the Ranger on duty that you are with the AMC and are here for the "Over-the-Rim Cleanup" (these are the magic words). They should let you in without paying the normal \$20.00 entrance fee (feel free to pay if you want, since the money collected at the entrance station does go directly to the park's upkeep).

Group Camping Option No. One -- Free — "The Stock Site" area

This is essentially in a "residential area" of the Canyon where the group needs to keep tents together
(Continued on page 8)

Grand Canyon Adopt-a-Crag (continued from page 7)

and not spread out too much. It has a chemical toilet nearby but no water, so everyone who chooses this option should bring their own water. The noise should be kept to a minimum. Parking in area OK.

Directions:

Driving north on US 180, turn left on Center Road. If you hit Mather Point, you have gone too far. Continue on Center Road to Tonto, a right turn. Follow Tonto, forking right at both "Y" intersections. You will pass a large historical warehouse on the left; the stock campsite is across the street from the warehouse.

Camping Option No. Two

Private Camp site Reservations - Mather Campground call 1-800-365-2267 Costs: \$15.00 per night - 6 person max, with 3 vehicles allowed at each private campsite, so you may want to pool with others. Other campsite rules are: no ground fires (use the grills) and quiet hours between 10 pm and 6 am.

Facilities at the campground include bathrooms with pay showers (bring quarters). Hot breakfasts Saturday morning are available at Yavapai Lodge at the Babbitt's parking lot.

Shoshone Point Evening Cook-out - Crazy Hat Contest:

Shoshone Point is about 2.3 miles east of the intersection of State Hwy 64 and the East Rim Road that goes to Desert Watchtower. There is a 270-degree view of the Canyon, a great sunset, and a small Anasazi granary. The AMC will provide charcoal and lighter fluid. There are two huge grills and several picnic tables but do bring your lawn chairs for extra seating. Bring your own meat selection and grilling tools. We will have a campfire too. The last people around the fire must have enough water to put the fire dead out. Also, someone in the last car out should lock the gate.

Join us here as well for the first time ever "Crazy Hat Contest". Get creative and have fun. The AMC loves those who like to embarrass themselves. Prizes will be given.

Car-pooling:

Since many participants will be at the Tuesday September 21st seminar, this is the best place to arrange car-pooling to the Grand Canyon, as parking is always tight.

Directions:

Drive north on State 64 into Grand Canyon National Park. Stay on the main road until you see the sign for Mather Campground directing you to the left (south). Follow the signs to the campground kiosk. On your right will be the showers. Look on the campground kiosk for a list of as

signed sites. Follow the map on the kiosk. Park at the assigned campsite and unload, set up your tent, etc. Then drive back out to the kiosk and back to the parking lot at Babbitt's General Store. Hike back to the campsite the same way, on the asphalt.

Contact: Scott Hoffman at:

shoffman14@mail.com

or call (623) 580-8909

to verify your attendance to these events.

Scott Hoffman - Outing Leader

Monica D. Miller - Activities Chair

Grand Canyon Over-the-Rim Cleanup

INSTRUCTOGRAM — BASIC SCHOOL

Wednesday, Oct. 6th at Dave and Sal's, 5617 E. Windsor Ave. That's south of Thomas and East of 56th St. We will assemble gear packs, measure ropes, and go over the class. Food will be provided. You don't have to call first, you can show up for the instructor meeting early or late, just be there whenever you can. If you can't make the instructor meeting, you are still welcome to come help with the class. Questions? Call Sally at 480-425-9689.

— Sally Borg Larimer

Canada and Chamonix by Erik Filsinger

Earlier this summer I had the good fortune to spend time in two of my favorite climbing areas. Banff in Canada and Chamonix in France. Canada in July was just good fun with an attempt on the Mitre, scrambling ascents of Mt. Edith and Mt. Rundle, and a good climb by Jutta Ulrich, Tom Conner and Susan Morris of the standard route on Mt. Temple. I couldn't join them due to injuries. I should say that it was a tumble with a grizzly, but I just fell off a log bridge. Boy did I get wet! Find out how below.

In August I had a good solid climbing trip to Chamonix, birthplace of mountaineering. Maria Stoianova and I did three great climbs, and learned a lot about the apparent affects of recent warming trends in the Alps. We climbed two alpine rock routes in the Aiguilles Rouges -- Clocheton and Aiguille du Belvedere -- both probably 5.5ish. Camping out on a promontory above Lac Blanc the wind rain, and lightning threatened our humble nylon abode. I hadn't been aware that it was illegal to "camp", but for climbers you are allowed to "Bivouac", which in French terminology means put your tent up after sunset and take it down before sunrise...but absolutely beautiful views of the Mt. Blanc massif.

After a trek back down to town, we headed up for our next climbing module from the Argentierre Refuge. Located miles up the Argentierre Glacier the Hut faces the most amazing array of north walls, running from the Trident, to Les Courtes, to Les Droites, and finally to the Aiguille Verte. Amazing walls of snow, rock and ice, thousands of feet high.

We soon learned our planned ascent of the NE Face of Les Courtes (of Joe Simpson fame) had to be scrapped because of the deteriorated condition of the route. By mid-August it was already done for the year.

A little digression for those planning Alps trips. The warming trend has had several severe impacts on climbing. The climbing season starts earlier and ends earlier. By August 15 almost all of the alpine routes were "out of shape" and guiding was being stopped. There was just no snow left. Also, the diminished snow and earlier icing changed the whole array of possible routes. The Bossons Glacier was a death zone of falling seracs, so the Grand Mulets route on Mount Blanc is no more. The Office of Haute Montagne does not even speak of classics like the Ger-

vasutti Couloir on Mt. Blanc du Tacul. It is just ice and falling rock...

And those routes that remain have changed their grade significantly. Our climb from the Argentierre Refuge was chosen as a moderate still in shape, or so we were told. But we did note that the rating PD had been changed to D. In the middle of the night we soon found a Milieu Glacier without snow. Being just ice the crevasses were magnified and we had to circumvent many deep chasms,

climb through several ice falls, before finally reaching snow bridges of dubious shape on the upper third of the mountain.

The headwall is normally a nice steep snow slope, but for us it was nothing but ice with a newly uncovered rock wall extending across it. The crux was a meter wide thread of water ice hanging through the rock band and reminded me of the North Face couloir on Gilpin. The ice climbing was fun, if tiring and I knew that I would have to downclimb because I had not brought my V-threader for leaving anchors (it was supposed to be climbable snow!). We stopped about 100 meters from the summit.

Because the rock band had heretofore been encased in snow (centuries we would presume) and now that snow was gone, as soon as the sun began to hit the face a volley of rocks began cascading down the ice face. These rocks had been precariously balanced under a snow pack, but a few melt-freeze cycles wedged them until gravity took over on the next thaw. It was a highly dangerous zone and we quickly vacated.

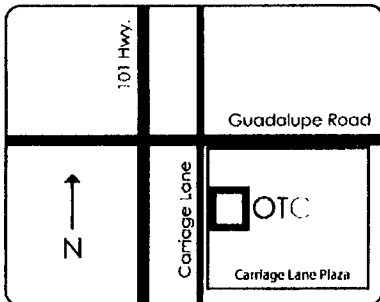
So, on your climbing in the Alps...go early, talk with the Office of Haute Montagne, and be cautious. It ain't the same old thing anymore....

But, as promised, two vignettes of adventure:
Both are on page 20.

ATTENTION AMC MEMBERS!



CONVENIENT EAST VALLEY LOCATION



www.overthetop.com



climbing gear & accessories

2655 West Guadalupe Road Suite 4
Mesa, Arizona 85202
(480) 890-0997

Located in the Carriage Lane Plaza shopping center

Climbing Anchors School

Arizona Mountaineering Club

Fall 2004

The AMC Climbing Anchors School teaches participants how to set climbing anchors for top-roping. This course is the logical next step for AMC Basic Climbing School graduates.

Class curriculum:

- Tuesday: Learn anchor components, anchor types, knots and hitches.
Thursday: Learn anchor system characteristics and construction.
Saturday: Gain experience setting anchors by practicing "hands-on" scenarios under supervision.
Sunday: Apply new skills setting real anchors on an optional climbing day— a climbing outing where students set the anchors under instructor supervision and then spend the day climbing.

Class schedule:

- Nov 9 Tuesday 6:30 pm–9:30 pm *Dreamy Draw Park (Phoenix)
Nov 11 Thursday 6:00 pm–9:30 pm Dreamy Draw Park
Nov 13 Saturday 8:00 am–4:00 pm North Scottsdale
Nov 14 Sunday 7:00 am–5:00 pm Climbing area to be announced during class

*To get to Dreamy Draw Park take SR 51 (Piestewa Peak Freeway) to Northern; turn east on Northern. This takes you directly into the park. Class is at the big ramada.

Experience required: AMC Basic School graduate or equivalent, which must include knowledge of how to belay, rappel, prusik, tie a figure-8-on-a-bight and figure-8-on-a-follow-through, and make a girth hitch.

Cost: \$75 plus membership if not already a member (\$25 for an individual and \$30 for a family). Membership is good through Dec., 2004. Register by sending a check payable to AMC Anchors School to 1654 W. Boston St. Chandler, AZ, 85224. No credit cards accepted. The registration fee is fully refundable if you cancel. Call Nancy Birdwell at 480-821-1932 or email info.anchors.school@AzMountaineeringClub.org for more information. The number of students will be limited to 36.

Equipment required for the class:

- 2 non-locking "D" or oval carabiners (at least 2, bring more if you have them)
 - 3 locking carabiners (at least 3, one of which should be a parabiner)
 - 1 rappel/belay device (Trango Jaws, Black Diamond ATC, Trango Pyramid, Figure-8, etc.)
 - 1 climbing harness
 - 1 ea 4', 6', 10' 6mm prusiks (untied length)
 - 2 ea 5', 10', 20' slings (1" tubular webbing, untied length, AKA runners)
 - 1 or 2 personal anchor slings (commercial daisy chains or 4' sewn Spectra runners or equivalent)
 - 1 helmet—**required for Saturday and Sunday sessions**, helmets are available if you do not have one.
- (The slings and harness are the only additional equipment needed over the Basic School requirements)

This class is designed to teach you how to set top-rope anchors. In order to become independent and set your own anchors, you should start acquiring anchor gear. These purchases will be limited by how much money you want/have to spend and how much interest you have in climbing independently. The following gear is not required for Anchors School, but if you have some, you will be able to practice setting it in class. All of the gear recommended below can be used for Lead School, and none of it will be wasted if you intend to set your own anchors. All gear should be marked prior to bringing it to class to prevent confusion between it and other people's gear. If you don't know how to mark gear, check with an instructor before doing so to avoid weakening equipment due to improper marking.

Other gear you may want to bring:

- Any pro you may have (hexes, nuts, camming devices, Tri-cams, etc.)
- Extra biners (regular D's, ovals, and lockers—stay away from specialty biners at this time)
- Extra slings (perhaps four 5', two 15' slings, untied lengths)

For more information: Visit the Arizona Mountaineering Club website at www.AzMountaineeringClub.org.

The Day(s) It Rained, Snowed,...Sneffels' Snake (almost)

I turned in my soggy sleeping bag for the umpteenth time in the last 16 hours. Tent-bound. Susan's wet clothes turned with me,...A sure way to dry wet clothes is to sleep with the,..., well, almost. Ever the fool, the night before had forgotten at the trailhead to put the tarp over the boxes we had left outside the car. During a 3:00 a.m. pee break during a lull in the storm I had discovered the inch of water inside the box of her clothes. All Susan's clothes wringing wet. We had tried the night before to dry them out ... but by the morning and the beginning of the hike up to Blaine Basin all we could manage was some soggy and some not so soggy renditions. Susan put up with it all (granted some frustration).

Prior to the start of the trip back in Phoenix Jutta Ulrich had turned up sick and not made the trip. Who all had arrived at the Blue Lakes Trailhead safely before the rain started were Susan, John Schneider, Deb Fuentes, Slade Weaver, George Krall, Bill Demlong, Karl Anderson and myself. The clouds had been broken and only an occasional drizzle when we had shouldered our backpacks for the hike into basecamp. We had made fine time up the good trail (with 3 stream crossings), but at about the 1 mile to go mark I had us all put our wet weather gear on due to the drizzle.

It didn't stop for at least 16 hours. We finished the hike, all somewhat in degrees of being wet, and were dismayed at the rain, slush, and snow that was falling. Setting up tents, trying to cook a meal, and the like was quite a chore in the continuous moisture.

I finally heard the alarm go off, 5:30 a.m., our appointed time to check things out. There was about 2 to 3 inches of new snow on the ground when I went tent to tent to call a team meeting.

Everyone was in somewhat good spirits, except for one case of a degree of altitude sickness. We assessed the situation. Snow here. Weather storms laying down new snow higher up. But it looked like a good day. What to do?

The Snake Couloir, a.k.a. Northwest Couloir, on the North face of Mt. Sneffels, is a deeply incut garbage chute, as are most mountain couloirs. Climbing the North Buttress to its left earlier this year Donna Gaudet and I had witnessed large rocks pounding down it. Potentially a foot of new snow in the last 48 hours. On probable sun baked surface. Avalanche conditions.

The decision: The Snake was not the place to be during the first 24 hours after a major snow fall. We

chose to make an effort to climb the East slopes, a nontechnical slog achieving Scree Col on the normal trade and tennis shoe southside route.

The day was almost too beautiful. Very frustrating with the Snake just there to our right. The snow did become deeper and walking through scree and boulder field taxing.

Our sick member had given it a try, but really shouldn't go any higher. Dry heaves began. So we talked. I took him down, while the other 6 ventured up the East slopes with a set turn-around time. A super strong group of four went for Scree Col under Susan's rope team leadership. Two others, their first time at much altitude, ventured somewhat more slowly along open and easy to follow slopes. We had established firm turn-around times, hand-rails for navigation, and bracketed weaker members between stronger ones. All in all they did marvelously.

The sun shone, and shone, and shone.... teasing us. My poor friend retched repeatedly, not wanting to be a burden he/she wanted to help break down camp upon our return. I finally talked he/she into laying down and sipping some tea. It was the first liquid they had retained in quite a few hours.

The two separate groups met their personal objectives and returned to camp...all conquering heroes. Splendid work all.

After a sunny hike back, we parted ways, some heading back to Phoenix, some for pizza and beer in Ouray.

Susan and I camped at Andrews Lake amid the Milky Way. In the morning we hiked toward Twilight in the morning sun. If only we had had the good luck to arrive a day later at Sneffels we would have all handled the Snake I'm sure.

Twenty-four hours separated good fortune from less good fortune.

But that is the way of the mountains. The gods rule and we but accept their judgment.

—Erik Filsinger

Ed — photo of cold and sodden crew waiting for the sun to hit them may be found on page , take by Bill Demlong.

Lead Climbing School

Arizona Mountaineering Club

Fall 2004

This is an advanced climbing class. Even if you don't plan on leading, you will learn much about the dynamics of climbing, and it will make you a safer climber. Protecting a climb is a different skill from climbing itself. We will talk about the dynamics of lead falls, how to prepare for a climb, the differences between single-pitch and multi-pitch, and the differences between clipping bolts and placing natural pro. There will be no "true" lead climbs during the class, but we will provide simulated leading exercises.

Class curriculum:

Tue	Lecture, slide show: introduction, the lead fall, equipment
Wed	Lecture, slide show: equipment (continued): the process and techniques of leading
Thu	Lecture, slide show: multi-pitch techniques, the descent, leader rescue, aid climbing
Sat	Hands-on practice: natural pro placement (Prescott)
Sun	Hands-on practice: leading on bolts (Prescott or Scottsdale)

Class schedule:

Sep 28	Tuesday	6:30 pm–9:30 pm	*Dreamy Draw Park
Sep 29	Wednesday	6:30 pm–9:30 pm	Dreamy Draw Park
Sep 30	Thursday	6:30 pm–9:30 pm	Dreamy Draw Park
Oct 2	Saturday	9:00 am–5:00 pm	Prescott (directions will be in syllabus)
Oct 3	Sunday	9:00 am–5:00 pm	Prescott or Scottsdale (directions will be in syllabus)

*To get to Dreamy Draw take SR 51 (Piestewa Peak Parkway) to Northern and turn east. This dead-ends at the Park. Walk to the big ramada next to the parking lot. Directions to the other locations will be given out then.

Experience required: Preferably, AMC Basic School and AMC Anchors School or equivalent experience. This includes knowing how to tie a variety of knots, belay, rappel, prusik and set anchors.

Cost: \$75 plus membership if not already a member (\$13 for an individual and \$15 for a family). Membership is good through Dec., 2004. Register by sending a check payable to AMC Lead School to 1654 W. Boston St. Chandler, AZ, 85224. No credit cards accepted. (Please note: the registration fee is fully refundable if you cancel.) Call Nancy Birdwell at 480-821-1932 or email lead.school@AzMountaineeringClub.org for more information. The number of students will be limited to 30.

Equipment required for the class: (*Will not be needed the first night. You should listen to the gear lectures before making purchases.*)

1. All climbing gear (harness, prusiks, biners, etc.)
2. Helmet—mandatory for all on-rock sessions
3. Specifically needed:
 - 2 20' slings (untied length), preferably different colors
 - 2 10' slings (untied length), preferably different colors
 - Nut pick
 - Quickdraws with biners—at least 5 per person
 - All pro that you own, which may include cams, hexes, wired nuts, Tri-cams, etc.
 - Consider combining with another person to have enough gear
4. Hiking boots or shoes with stiff soles for Saturday, climbing shoes for Sunday
5. Optional: kneepads for Saturday (\$3–6 at Home Depot, \$5 volleyball pads at sporting goods stores)

For more information: Visit the Arizona Mountaineering Club website at www.AzMountaineeringClub.org.



Phoenix



HALLOWEEN

"Phlapper"



Fest



Come join us October 30th & 31st at Oak Flats for camping & climbing with a twist. Climb in costume, costume contest, trick-or-treating from tents and jack-o-lantern contest.

All activities on the 30th. Clean up on the 31st.

This is a free event supporting Friends of Queen Creek.

Donations are not required but greatly appreciated.

For more info and/or to volunteer e-mail Javier Gonzalez at

jsg21@cox.net or jgonzalez@c21dp.com.

A YAHOO GROUP IS OUT THERE

There is a yahoo group composed of local climbers who are members of the AMC. It has no connection with the club other than that AMC membership is a requirement to join. "Helps to know who you are climbing with" as they say. The group has been around since 2000.

It can serve as a quicker communication means than the newsletter or the AMC website. Plus it is all-directions communication rather than just the AMC-to-its-members.

To visit the site, go to <http://groups.yahoo.com/group/AZMNCLUB/>

What happens after that is up to them and you.



At least these AMCLers are cool after a rainy, snowy night on Mt. Sneffles in Colorado. Read about this less than perfect outing on page 12. Photo by William Demlong.

SCREE — By Wally

The Arizona Mountaineering Club has come a long way in nearly 40 years.

In the beginning all was void...

Actually, we liked voids so long as there was something climbable alongside them. There was a lot of follow-the-leader and overcoming the pucker factor involved then. Some of us knew a bit about climbing, others knew less, but we learned.

One milestone that marks how far we have come is the recent board decision to revise our equipment rental program. The equipment that people rent nowadays consists mostly of ice and snow equipment — crampons, snowshoes, axes and so on. Erik Filsinger has been managing that portion of the gear for a couple of seasons. Gary Gerden, who was our most recent rest-of-the-equipment rental chairman, had not one actual carried-to-fruitition equipment rental during his tenure. He had the non-ice equipment like tents and stoves and such.

This is in stark contrast with the early days when club equipment consisted of about three 120 foot nylon (not goldline) ropes, a half-dozen carabiners and a few slings. Some people had their own ropes. Many did not. (You had to mail off for them — sometimes to Austria.)

Eventually the realization dawned that it was not terribly smart to send club ropes out with people who were likely to use them to unstick stuck trucks if the occasion arose — and not say anything about it. Who knows what torments those ropes had endured? So "climbing gear" was dropped from the inventory as a sanity measure.

But climbers then were universally impecunious as well as improvident so AMC began amassing other useful stuff that would enable members to get out among 'em. There were tarps and tents and GI plywood backboards and stoves and such. It made a difference, having a canvas roof over one's head while the rain drowned out the view of surrounding Colorado peaks. But climbers' needs have obviously changed.

The result — AM's "non-mountain" gear will be disposed of, probably at a members meeting. (Hopefully there will be spirited bidding on the ratty old tents, etc.)

As it stands, Erik F. will manage the mountain gear while Linda Lock will keep track of the rental climbing shoes, as she has done forever.



Arizona Hiking Shack
11649 N. Cave Creek Rd.
Phoenix, AZ 85020
Phone: (602) 944-7723
www.hikingshack.com

We're located 1/8 mile south of Cactus
on Cave Creek Rd.

Three great reasons to shop at the Arizona Hiking Shack for all your climbing gear

1. The Arizona Hiking Shack has **IN STOCK** the largest selection of climbing gear in the Valley. Petzl, Metolius, Black Diamond, Misty Mountain, Omega, DMM, 5-10, Scarpa, La Sportiva, Yates, PMI, Sterling, 2-Cam, Climb Tech, Kong, Trango, Camp, Marmmut, Boreal, Pica Mountaineering, and Trango are just a few of the brands we carry. If we don't have what you need in stock. . . we'll order it for you. . . with **FREE** shipping!

2. The **staff** at the Arizona Hiking Shack **are climbers** too. You get knowledgeable, friendly advice on gear, places to climb, and the absolute best fit on harnesses, shoes and helmets. The Arizona Hiking Shack is locally owned and has been selling gear to valley climbers since 1972. We take pride in helping to select the right hardware for your climbing adventures. (Besides most of us are AMC members also!)

At the Arizona Hiking Shack, **AMC Members get a 15% discount** on everything they buy, everyday of the week, every week of the year. Why? Two Reasons. First, we respect the job the AMC does. The AMC not only teaches people how to climb safely, they also teach an ethic of responsibility to the outdoors that is essential to keeping our climbing areas open. Second, you learn to climb in the valley. . . well, like it or not: . . . we consider you one of OUR homeboys or girls and simply said, we want your business! Ultimately, we know you have many choices when it comes to purchasing your equipment and by having a great selection of gear, a knowledgeable staff, and totally killer deals, we hope you'll come shop with us.

Basic Rock Climbing School

Arizona Mountaineering Club

Fall 2004

The Arizona Mountaineering Club (AMC) has been teaching basic rock climbing for over 35 years. We place maximum emphasis on safety and self-rescue. This is a beginning climbing class. We will teach you equipment care and usage, rope handling, climbing knots, belaying, rappelling, climbing techniques, and self-rescue. Enrollment fills up quickly, so don't delay: make a reservation to join us soon!

Class schedule (this is 2-week class):

Oct 12	Tuesday	5:30 pm–10:00 pm	*Havasupai Ramada, North Mountain Park
Oct 14	Thursday	6:00 pm–10:00 pm	Havasupai Ramada, North Mountain Park
Oct 16	Saturday	8:00 am–5:00 pm	North McDowell Mountains, Scottsdale
Oct 17	Sunday	8:00 am–5:00 pm	North McDowell Mountains, Scottsdale
Oct 19	Tuesday	6:00 pm–10:00 pm	TBA
Oct 21	Thursday	6:00 pm–10:00 pm	TBA
Oct 23	Saturday	all day	Various times, various places

*North Mountain Park is located at Peoria and 7th St. 5 miles north of Camelback on 7th St. Turn west into the park and look for the orange traffic cones imprinted "AMC" at Havasupai Ramada.

Experience required: None. Even if you have never climbed a tree before, this class is for you.

What is provided by the AMC:

- Technical climbing gear that will be used for the school (and is yours to keep): 1 belay/rappel device, non-locking carabiners, 3 locking carabiners, 4 prusiks, one 5' sling (subject to change)
- Harness and helmet provided free by the AMC for the duration of the class if needed
- Basic climbing textbook
- Instruction through all phases of the class
- Discounts from local retailers on climbing gear

Equipment recommended for the class: You will wear a climbing harness at every class, so dress casually. Most sessions will be held outside, so watch the weather. Climbing shoes are recommended for the weekend sessions only. The AMC rents climbing shoes on a first-come, first-serve basis on the **second** night of class for \$10 for the class. We will discuss what to look for in a shoe on the first night of class.

Paperwork: You will be required to read, fill out and sign an AMC release of liability on the first night of class. Students under 18 must have the release signed by their parent or guardian (no students under 14 please: students 14-15 years of age must be accompanied by an older adult).

Class fee: \$160 plus membership if not already a member (\$13 for an individual and \$15 for a family). Membership is good through Dec., 2004.

Registration: The class is limited to 40 students. To reserve a spot, send a check for \$160 + membership cost (see Class Fee above) made out to AMC Basic School. Include your clearly printed name, address and current phone number(s). Mail to: AMC Basic School, 1025 E. Highland Ave., #26, Phoenix, AZ 85014. No credit cards accepted. If you have further questions, please call Slawa Ciula at 602-265-2661 or email at amcbasicschool@hotmail.com. (Please note: \$75 is a non-refundable deposit; the rest will be returned if you cancel. If someone else can be found to take your place, the entire \$160 will be refunded.)

For more information: Visit Arizona Mountaineering Club website at www.AzMountaineeringClub.org.

An Embarrassment — no, an Exultation of Riches — in Crag Days

Editor's note — Like the magical mountain in folk tales that moves about, Arizona's annual Access Fund cleanup site has flitted all around the landscape.

At first it was going to be at Queen Creek combined with our traditional post-basic grad. road Cleanup and Climb outing on Oct. 30th. We will still do that, particularly the road part and then the climb part. (The Friends of Queen Creek are also planning a Halloweenie type party that night if you can be there.)

REI has invited us to help with a cleanup at the Beardsley Boulders on the afternoon of the October 30th. If you don't know about the BB's or can't make Queen Creek, call 602-996-5400 for details.

And, finally, as leadership rubbed two or three brain cells together, the realization came that Crag cleanups don't come more dramatic and newsworthy than our annual dangle over Grand Canyon's rim as a favor to the U.S. Park Service September 25th. So that will be our "official" one. But feel free to indulge

AMC'S OVER THE RIM ADOPT-A-CRAG DAY SET FOR 25 SEP.

yourself to your heart's content. It is hard to have too many crag days.

In the Fall 2004, the Access Fund will sponsor the Fifth Annual Adopt-a-Crag, a national initiative devoted to natural resource stewardship and volunteerism. This year, the Access Fund anticipates over 100 Adopt-a-Crag events at climbing and bouldering areas around the country. The goal of the initiative is preserving climbing resources and maintaining climbing areas.

Why is Adopt-a-Crag important?

Adopt-a-Crag is about giving back to the climbing areas we use on a regular basis. From the signs in the parking areas, to the established trail systems, to the rocks and boulders where we devote endless hours, climbers are frequent land-users, and it is important that we make an effort to maintain and care for that land. Adopt-a-Crag encourages climbing communities to engage local land managers, landowners, park service employees and forest rangers in conversation about ways to preserve and protect their climbing areas

and environments. (From the Access Fund website: www.accessfund.org)

The AMC and Adopt-a-Crag

The AMC has contributed to several activities over the last few years. In 2003, nearly 20 volunteers from the AMC and from local REI stores improved the trail to the "Suicide Direct" climb in Echo Canyon on Camelback Mountain. The AMC supports the ACCESS fund and encourages members to join ACCESS.

For 2004, there are two events the AMC is supporting. We have designated the Grand Canyon Over-the-Rim Cleanup as the Adopt-a-Crag event for the AMC. On September 25, members will rappel over the rim and pick up trash (see details in this newsletter).

Also, local REI stores are organizing a cleanup of the Beardsley Boulder area as an Adopt-a-Crag event, and AMC members are invited to join in. This is scheduled for Saturday, October 30, from 1 – 5 pm. If you would like to help, please contact REI Customer Service (602) 996 - 5400 or (480) 967 – 5494 to register or to get more information.

Jutta Ulrich)

REI Adopts Beardsley Boulders

REI will be hosting an Adopt-a-Crag event at Beardsley Boulders on Saturday, 30 October, from 1:00 to 5:00 p.m. Stop by the store for our Garage Sale, then join us for an afternoon of cleaning up and working on a favorite local climbing spot. Please register with REI Customer Service 602-996-5400 or 480-967-5494.

The folks from CAMRA send along their sincere thanks to everyone who helped them out by attending the dinner Thursday night. They raised over \$1,500, so a big "Thank You" from Bob Zimering and the other CAMRA crew.

Queen Creek climbing area access issue

Climb it? Or mine it?



Recreational access to the Queen Creek climbing area is being threatened by a copper mine that has been proposed by the Resolution Copper Company.

Resolution Copper is trying to take over Oak Flat campground via a congressionally legislated land swap, which in turn would threaten access to all these areas: Queen Creek Canyon, Apache Leap, Devils Canyon, Hackberry Canyon, etc.

We need your help to keep this world-class climbing area (and home of the Phoenix BoulderBlast) from disappearing forever into a big hole in the ground. Join the Friends of Queen Creek!

We are not opposed to mining. But we are FOR ACCESS! We need to make Resolution Copper develop their mine in such a way as to preserve recreational access to these public lands.

Be a Friend of Queen Creek. Act now to help preserve access to your public lands by subscribing to the Friends of Queen Creek FREE e-mail action list at info@friendsofqueencreek.com

www.friendsofqueencreek.com

The AMC is represented on the Steering Committee of Friends of Queen Creek.

Friends of Queen Creek: Recent activities

From: vollmer <vollmer@rice.edu>

The FoQC Steering Committee met twice recently to discuss upcoming efforts. We agreed to generally define the Queen Creek Canyon area as: Queen Creek Canyon, Oak Flat Campground, Upper and Lower Devils Canyons and the Apache Leap. Public access to all these areas are threatened by proposed mining operations. A powerpoint presentation, about the possible loss of all public access in the Queen Creek Canyon area, was developed for upcoming meetings with several local groups. Plans were made to begin regular FoQC to FoQC mailing list. We are progressing on our efforts to get federal non-profit organization (501C3) status.

In general, our discussions and efforts are to prevent any legislative land swap or the reversal of the two executive Public Land Orders that protect the

Oak Flat Area from mining activities.

The Friends of Queen Creek Steering Committee is small. We cannot do all the things that need to be done. We need generally responsible folks, who can participate in small projects and regular tasks. We need special expertise in computer graphics and web design.

WHAT YOU CAN DO:

- * Get on the email list at www.friendsofqueencreek.org
- * Participate in the AMC Queen Creek Cleanup and Climb on October 30th.
- * Inform your friends about expected public access challenges to the Oak Flat/Queen Creek area.
- * Get out & work on a BoulderBlast committee.
- * We have openings on the Friends of Queen Creek Steering Committee for talented, enthusiastic, dedicated, influential individuals who want to make a difference. Email <mailto:vollmer@rice.edu>skatrash@cox.net for more details.

AMC Outing Leader Meeting

On September 9th Utta Ulrich held a meeting so that the current outing leaders could meet in a forum to discuss how we could increase club outings and develop new out leaders.

Items approved included utilizing incentives such as a new rope and or gear to the leaders with the most outings per year. Other incentives were to add gas allowances for outing trips. Adding additional insurance to the Club's liability policy was also presented and addressed by the President.

New Outing Leader Development steps would be to include and announce new OL Candidates to the current Outing leaders via email from the Outings Chair. Also include candidates on the Outings Chair monthly "AMC Outings Request Email".

OL Attendance: Erik Filsinger, Scott Hoffman, Wayne Schroeter, Rogil Schroeter, Sally Larimer, John Keedy, Jeff Nagal and Jef Sloat. President Bruce McHenry, Vice President, Utta Ulrich Outings Chair, Monica D. Miller.

The Helmet

It was still dark and Maria and I were struggling across the boulder field moraine under the Milieu Glacier near Aiguille du Argentierre.

We were fit and confident, obviously finding a better path than the circuitous one the other team's headlamps seemed to show off over there somewhere. Walking on terrain long covered by now receding glacial ice, I looked at my feet. An ice tool. Probably 1980's vintage, it was simply laying there in the open, only found because my headlamp chose to shine on it. I picked it up.

Good. The route looked icy and I had regretted not bringing the second tool I had left in the Youth Hostel. Maria ragged me for always finding booty. It was her who spotted something else. "Is that a helmet?"

Under a nearby rock was a white helmet. The rock sat on it, probably due to melting ice dropping its burden there. The helmet looked bent and damaged. Neither of us moved to retrieve it. We moved on, not wanting to know more about the why and where of it coming to be at the tail of the glacier. A Soul clung to it and asked to left alone. I was honored that he let me use his ice tool.

—Erik F.

The Fall

I was suddenly under water. What had happened? I struggled to get my head above water and slipped again in the rushing water, being forced somehow

downstream. Without any emotion I felt cold, embarrassed, and out of control. I had been crossing the rickety log bridge, slickened by spraying water from the rushing stream. I had gotten about half way across and...I was in the water, not sure of what had happened.

Almost immediately I was pushed downstream, where fortunately the stream spread and was shallower. Even though only knee deep the stream pushed me back down, twice I think.

Somehow I flopped and ended up on the other side, a wounded salmon gasping for air. I was injured, somehow. Some blood. Susan, Tom and Jutta watched helplessly from the other side...

In their arms somehow back on the other side I stripped the icy feeling clothes and braced against a boulder and some degree of shock. I cried.

—Erik F.



The infamous step-over at The Mace. Some climbs separate the men from the boys. This one identifies short people and subjects them to trepidation and well-deserved harassment. Frank Vers led the way (last year) and is prepared to do so again this October. Photo by Monica Miller. See Outings.

Calendar of Events *(Continued from page 22)*

Nov 3 **Anchors School Instructors' Meet**

Nov 4&7 **Alpine Rock Seminar.** Skills involved in moving from rock crag to mountain setting. Should have AMC Basic School, AMC AARS and AMC Lead Schools, or equivalents. Enrollment via permission of instructor. Size limited. New students \$50. Returning students \$25. For details contact Erik Filsinger at smorefil@aol.com.

Nov 6 **Scorpion Ridge** Another not in the guidebooks! Numerous 2 short-pitch routes ranging from 5.5 to 5.8 Limit 4 with 3 OL helpers. This is a great outing for those who just completed Lead School. Jeff Nagel. 602-318-9538 or azfreedheart@aol.com. Helmets Required.

Nov 9 **Anchors School** Nov. 9, 11, 13 and 14.

Nov 23-28 **Joshua Tree Thanksgiving.** Details next time.

Billboard—Other Scheduled Events

Outings listed in this section are not AMC sanctioned outings. Any AMC member can list an event he or she is planning and which is open to other AMC members. The member does not have to be an approved AMC Outing Leader. If you wish to participate you should be physically and mentally prepared with the appropriate gear and should contact the member planning the outing. You are responsible for your own safety, not the person leading the outing. You should always be aware of the risks involved in outdoor activities and conduct yourself accordingly.

Wednesdays North Mountain Hikes after work. Rogil Schroeter (623) 512-8465 or Oct 11

Oct 13 Alpine Seminar. Beginning October 13th and running the second Wednesday of each month, Erik Filsinger will offer an evening seminar based on Mountaineering: Freedom of the Hills at a site to be determined. Each month a chapter from the book will be discussed, e.g., Expedition Planning, Clothing Systems, Winder Camping, High Altitude Medicine, Avalanche Awareness, etc. Contact Erik for topics, location, times, and dates by emailing him at smorefil@aol.com. Open to all.

Oct 30 Phoenix Halloween "Phlapper" Fest at Oak Flats sponsored by the Friends of Queen Creek. Camp overnight and party after AMC's Clean and Climb session that morning. See announcement inside.

November's Board Meeting will be held at the Monastery across from Los Olivos Center at 7:00 p.m. on TUESDAY, Sep 7th.

Board meetings are open to any member who wishes to attend. Call AMC's President if you wish to be on the agenda or to make a presentation.

Zen-Lizard Systems Presents

X-Chalk

The world's first rock climbing chalk that soothes hot and ripped up fingers—as you climb! Also helps heal cuts and scratches. All natural—no chemicals. Available at the Phoenix Rock Gym, Climbmax, the Arizona Hiking Shack, and online at:

<http://www.zen-lizard.com>



Calendar of Events

AMC Outings

Participation in AMC outings requires club membership. Outings vary in degree of danger. When you participate in an outing you should be both physically and mentally prepared and equipped with the appropriate gear. You should always be aware of the risks involved in outdoor activities and conduct yourselves accordingly. The Outing Leader is not responsible for your safety; you are. Please contact the Outing Leader before going on an outing, discussing your capabilities with the Outing Leader. You must be over 18 years of age to participate, or must be accompanied by a parent or responsible adult, and obtain prior consent from the Outing Leader. Those accompanying minors are responsible for the minor's safety.

- Sep 24-26 **Grand Canyon Cleanup and Climb.** See story inside. Camp Friday night, go over the rim on Saturday, BBQ that evening, climb Sunday. Scott Hoffman for details 623-580-8909.
- Sep 29 **AMC Lead School.** Sep 28, 29, 30, Oct 2,3. For info/signup call Nancy Birdwell at 480-821-1932
- Oct 5 **Board Meeting** at Monastery, 7:00 p.m.
- Oct 9 **Pinnacle Peak, Cactus Flower East,** . Meet in Pinnacle Peak Parking lot at 7:30 AM. Climbs are 5.6 to 5.10c single pitch. Sign up with John Keedy at jwkeedy@cox.net or 623-412-1452. No limit.
- Oct 9 **Four Peaks — Ladybug Route.** 5.6.. One to 1-1/2 hour approach. Three pitches plus short traverse. Meet at Denny's just west of Beeline Hwy on Shea Blvd at 6 a.m, Limit 3 (plus 2 OL helpers) Helmets required. Call Jeff Nagel at 602-318-9538 or azfreedheart@aol.com.
- Oct 12 **AMC's Basic Mountaineering School.** Oct 12, 14, 16, 17, 19, 21 and 23. For info and signup call Slawa Ciula at 602-265-2661.
- Oct 16 **Regular Meeting** at New Bethel Church, 3819 N. 17th Ave. Jared McMillan on Red Rocks, Nev.
- Oct 23 **The Mace** 5.9+ located in Sedona, AZ - 11th annual ascent of this classic sandstone spire. Limit 4. Contact: Frank Vers at: 480-947-9435
- Oct 30 **Crown King.** Crown of Thorns area.(Nope, you won't find this one in the guidebooks.) Limit 6 participants plus 2 OL helpers. 1/2 hour approach. 5.5 to 5.10 climbs, single pitch on backcountry rock. Meet at 7 a.m. at Safeway lot in Anthem at east end toward McDonalds. Jeff Nagel 602-318-9538 or azfreedheart@aol.com.
- Oct 30 **Queen Creek Clean up and Climb** - No limit 8:00 AM Meet at Mesa Community College Parking lot for car pooling. Or be at that Oak Flats Turn off from US 60 at 9:00 Am. Pick up trash for one hour then climb on some 5.7 to 5.11 climbs. Contact: Scott Hoffman 623-580-8909

(Continued on page 21)

Outing Leaders

Requirements for becoming a leader: take the Basic, Anchors and Lead classes (or equivalents), be a member for at least one year, complete a basic first aid and CPR class (8 hours or more), and be approved for leadership by at least five current leaders through formal application process and by the Board of Directors. Contact Dave Larimer at (480) 425-9689.

Tom Conner	480-897-7623	David Larimer	480-425-9689	Rogil Schroeter	623-512-8465
Erik Filsinger	602-906-1186	Sally Borg Larimer	480-425-9689	Wayne Schroeter	602-402-1631
Jeff Hatfield	480-897-1750	Tim Medlock	719-494-1171	Jef Sloat	602-316-1899
Scott Hoffman	623-580-8909	Jeff Nagel	602-318-9538	Mick Strole	520-856-3335
Richard Horst	623-434-4769	Paul Norberg	602-808-9244	Rick Taylor	623-487-8507
David Johnson	623-486-7387	Paul Paonessa	602-493-7356	Frank Vers	480-947-9435
John Keedy	623-412-1452	Chris Query	602-323-5927	Tim Ward	602-212-1929
Tim Lange	480-598-9124	Tim Schneider	480-497-8377		

October 2004

Sun	Mon	Tue	Wed	Thu	Fri	Sat
		<i>(Lead school 28 Sep)</i>	<i>(Lead School 29 Sep)</i>	<i>(Lead School 30 Sep)</i>	1	2 Lead School
3 Lead School	4	5 AMC Board at Monastery	6 Basic Instrs Mtg <i>Sunrise 6:27 Sunset 6:05 M-rise 1112p</i>	7 <i>Last Quarter</i>	8	9 Pinnacle Peak
10	11	12 Basic Class	13 <i>Sunrise 6:32 Sunset 5:56 No Moon</i>	14 Basic Class	15	16 Basic Class
17 Basic Class	18 AMC Reg Meeting at 3819 N.27Ave	19 Basic Class	20 <i>Sunrise 6:37 Sunset 5:46 M-set 11:43p 1st Quarter</i>	21 Basic Class	22	23 Grad Climbs <hr/> The Mace
24	25	26	27 <i>Sunrise 6:43 Sunset 5:41 M-rise 5:53p Full Moon</i>	28	29	30 Queen Crk Clean and Climb <i>(Halloween with FOQCr)</i>
31						

Arizona Mountaineering Club
4340 E Indian School, Ste. 21-164
Phoenix, AZ 85018

**October meeting place is
at New Bethel Church,
3819 N. 27th Ave, 1/4
block south of Indian
School, one west of I-17.**