

NOVEMBER 2004

ARIZONA MOUNTAINEER

The ascent of Mount Hayden required two attempts by AM-C'ers last spring. It is a spire in the Grand Canyon out from the North Rim's Point Imperial. Route finding to and from the spire proved difficult and, thanks to down trees and chaparral, a tiring, sweaty experience. The three were Mike Knarizer, Ryan Braasch and Scott Pazrsons. Story on page 7.



The Arizona Mountaineering Club

Meetings: The AMC normally meets the 4th Mon. each month (Nov. & Dec. meetings are usually the 3rd Mon.) at 7:00 pm at: Los Olivos Senior Center, 2802 E. Devonshire Ave. Phoenix, Az

November's Mtg (and maybe Dec.) will be at the Pyle Center in Tempe at Rural and Southern.

Board Meetings: Board meetings are open to all members and are held two Mondays prior to the Club meeting at Los Olivos Center.

Dues: Dues cover January through December. A single membership is \$25.00 per year; \$30.00 for a family. Those joining after June 30 pay \$13 or \$15. Members joining after October 31 who pay for a full year will have dues credited through the end of the following year. Dues must be sent to:

AMC Membership Committee
6519 W. Aire Libre Ave.
Glendale, AZ 85306

Schools: The AMC conducts several rock climbing, mountaineering and other outdoor skills schools each year. Browse the AMC website or email info@azmountaineeringclub.org for information on schedules and classes.

For More Information:

Call ... (623) 878-2485

Email info@azmountaineeringclub.org
president@azmountaineeringclub.org
board@azmountaineeringclub.org

Website www.azmountaineeringclub.org

Mail ... Arizona Mountaineering Club
4340 E. Indian School Rd., Ste 21-164
Phoenix, AZ 85018 (1004)

Board of Directors:

President Bruce McHenry 602-952-1379
Vice-President..... Jutta Ulrich 602-234-3579
Secretary John Keedy 623-412-1452
Treasurer Clay Vollmer 602-595-7266
Director 2-year Scott Hoffman 623-580-8909
Director 2-year Wayne Schroeter... 602-402-1631
Director 1-year Rich Kocher..... 480-966-5568
Director 1-year Erik Filsinger 480-314-1089
Director 1-year Lynn Readicker..... 480-970-1991

Committees:

Archivist Jef Sloat..... 602-316-1899
Classification..... David Larimer 480-425-9689
Elections Dave Van Hook 602-790-6283
Equipment Rental Erik Filsinger 480-314-1089
Email Jeff Hatfield..... 480-897-1750
Land Advocacy ... Erik Filsinger 480-314-1089
Librarian Richard Kocher..... 480-966-5568
Membership Rogil Schroeter 623-512-8465
Mountaineering ... Erik Filsinger 480-314-1089
Newsletter Wally Vegors..... 602-246-9341
Outings Monica Miller..... 623-362-0456
Programs..... Sheri Kenley 602-242-0504
Training & Schools Wayne Schroeter . 602-402-1631
 Basic Class Sally Larimer 480-425-9689
 Anchors Class.. Tom Conner..... 480-897-7623
 Lead Class..... Wayne Schroeter... 602-402-1631
T-shirts..... Sally Larimer 480-425-9689
WebSite Kirra

webadmin@azmountaineeringclub.org

The AMC Access Committee: The Committee works by itself and with the national Access Fund to maintain public access to climbing areas. If you know of areas that are threatened with closures or climbing restrictions, please notify the Access Fund representative Jutta Ulrich at (602) 234-3579.

The Access Fund: This is a national, non-profit, climber's organization that works to maintain access to climbing areas nationwide. Climbers can join The Access Fund by mailing an annual, tax-deductible donation of \$35 or more to: The Access Fund, P.O. Box 17010, Boulder, CO 80308, or calling 888-8MEMBER or giving it to the AMC Club Treasurer to be sent to The Access Fund in your name. A donation of \$35 or more is needed to receive *Vertical Times*, The Access Fund newsletter. One can also join electronically at https://www.accessfund.org/secure/joinnow/join_indiv.php

This Month in the AMC

- 2..... Who does what, addresses and numbers
- 3..... Birthdays; Index
- 4..... Board Minutes, New Members; Volunteer?
- 5..... Discount Directory; Treasurer's Report; Rentals
- 6..... Bill Stinson Death; Queen Creek Friends
- 7..... Mt. Hayden ascent..
- 8..... Enchanted Tower report
- 9..... J-Tree Plans
- 10.... Proposed AMC 2005 Budget
- 11.... J-Tree contd.
- 12.... Hiking Shack
- 13.... Anchors Class Particulars
- 14.... Hayden contd.
- 15.... Lead Scool; budget continued
- 16.... Halloween at Queen Creek
- 17.... Outings, continued
- 18.... Outings
- 19.... Calendar

Newsletter

The *Arizona Mountaineer* is published monthly by the AMC. Members are encouraged to submit articles and photos about their climbing- or mountaineering-related activities. Submit items for publication (subject to approval) to AMC Editor, 6151 N. 8th Ave., Phoenix, AZ 85013 or through email to azmountaineer@azmountaineeringclub.org. Prints are preferred over slides. Digital photos should preferably be in JPG format and at least 300 dpi. Articles can be in any standard word processing format. For more info call the editor at (602) 246-9341.

Advertising in the *Arizona Mountaineer* is accepted, subject to approval, at the following rates. Personal ads are free to members. Business ads are \$5.00 for a business card, \$10.00 for half page, \$20.00 for full page, and \$25.00 for inserts.

Dec Deadline: 6 November 2004

NOT STUPPI!

**First Is Anchors School;
Then comes J-Tree.
The weather is great for
these or other doings of
your own concoction.**

**As an ancient Iraqi poet said
"The bird of time has but a
way to fly — And, lo,
the bird is on the wing."**

To Feel Alive — Climb!

Library

You must be an AMC member; i. e., your name must be on the most current membership list.

The circulation period is one month. Materials are due at the next general club meeting. The overdue fine is \$2 per title per month. Please contact the librarian if unable to return your books and tapes.

The circulation limit is three titles per person. One of these may be a videotape, for which a \$50 deposit is required. Each guidebook requires a \$25 deposit. (Note — Library is kaput during Los Olivos expansion.)

NOVEMBER BIRTHDAYS

Roland Hintzman 1 . Frederick Simpson 3 . Michael Kelly 4 . Michael Gray 6 . Robert Lowe 8 .
Carla Parisi 9 . Jim Watson 11 . jill Iverson 13 . Susan Morris 13 . Bill Berkley 14 . Sheri Kenly 14 .
Matthew Hanly 16 . Todd Barnes 17 . Bruce Robbins 19 . Mark Gordon 23 . Clay Vollmer 23 .
Sandy Draus 28 . John Granger 28 . Peter Neubauer 28 . Isabelle Plante 28 . Stan Marks 29 . Greg King 30

Minutes of the AMC Board Meeting: 4 Oct 2004

Members Present: Bruce McHenry, Rich Kocher, John Keedy, Lyn Readicker, Clay Vollmer, Jutta Ulrich, Wayne Schoeter

Committee Chairs Present: Wally Vegors

Members Present: Jeff Nagel

Meeting called to order by Bruce McHenry at 7 PM with quorum present.

Minutes of September Board Meeting approved as published.

Financial Secretary's report approved as published.

President's Updates:

A. Current membership is 407.

B. Newsletter has several items but, as always, needs more input.

C. Los Olivos Center will not be open for November or maybe December. We are scheduled for Pyle Center on Nov 15th and Dec 13th.

New Business:

D. 2005 Budget – Budget discussed at length. Numerous changes made. Bruce will submit revised budget for electronic vote by Board.

E. Waiver release – Wayne discussed changes from old waiver to new waiver. Modifications suggested. Wayne will make suggested changes and re-submit to Board.

F. Outing Leader Inactivation Procedure was discussed at length. Motion made and seconded to rescind "Policy to Maintain Outing Leader Status" and "Policy to Inactivate Outing Leaders". Vote was 5 fore and 2 against. Motion carried.

G. Request made to ask Classification Chair to resubmit Outing Leader candidate Monica Miller for a vote of present Outing Leaders and to make recommendation to Board on her application for Outing Leader.

Meeting adjourned at 9:15 PM.

Volunteers Needed for "Repeat Ascender" Program

The Latino Peace Officers Association (LPOA) is hosting another "Repeat Ascender" program on Monday, November 1st from 6-9pm at Phoenix Rock Gym. This event and others put on by LPOA are designed to help at-risk kids 8 to 16 years old participate in a positive experience that will help them see the alternatives to drugs and gangs.

LPOA needs AMC volunteers who will act as mentors and coaches during this program. These volunteers will give basic climbing and safety instruction, as well as belay the kids on their climbs

If you're interested in helping the LPOA with this program, please contact AMC member Danny Gonzales at dgonza9724@aol.com or 602-550-8371.

NEW MEMBERS

Suzy Allegra
Michal Danek & wife
Christopher Dunn
Shannon Flowers
Charity Gonzales
Randy Goodale
Justin Hatfield
Matthew Hendrickson
Blair McLaughlin
Voraporn Pasawat
Bonnie Roill
Douglas Roill
Michael Turvey

Discount Directory

The following merchants currently offer a discount to AMC members:

Arizona Hiking Shack—11645 N. Cave Creek Rd., Phoenix, AZ 85020, (602) 944-7723. Show your AMC membership card and get a 15% discount.

Az on the Rocks Gym — 16447 N. 91st St., Scottsdale, Az.85260. 480-502-9777. Gym membership 10% off for AMC members.

OvertheCrux —2655 W. Guadalupe, #4, Mesa, Az 85202. 480-890-0997. 15% off to AMC members.

Solid Rock Gym — 23620 N. 20th Dr, Phoenix, Az 85027 (623) 587-7625 Gym membership 10% off for AMC members.

Rental Equipment

EQUIPMENT	Qty	\$Dep	1-3day	4-7day
MSR Alpine snowshoes	5	32	10	16
Ice Crampons	5	26	8	13
Ice axes (70 cm)	6	16	5	8
Ice axes (90 cm)	5	14	5	7
Snow shovel	1	8	3	4
PortaLedge	1	100	30	50
Climbing shoes	Various sizes...Call			

Equipment Rental Guideline: Your name must be on the most current membership list. Deposit required; varies by item; generally \$20-\$50. The two-personal-checks system works best. Advance reservation suggested. If not using the reserved equipment, please call and cancel. Call Linda Locke at (602) 997-4235 for shoes. For everything else, call Erik Filsinger at 480-314-1089.

My apologies to you contributors who do not find your offering in this newsletter. Cox.net is often down for days at a time so I am unable to receive or send emails. The last electronic newsletter was 10 days late because of this situation — it should have gone to Kirra but did not. Our financial report was not updated this month due to the nonfeasance of Cox.— your disgusted Editor

Treasurer's Report

Statement of Operations

01Jan 04 Thru 7 Sep 04

Category Description	Amount
INCOME	
Advertising	160.00
Decals	8.00
Dues	7,072.50
Merchandise (Tee Shirts & Etc)	490.00
Mountaineering Schools	400.00
Program Income	101.00
Rental Income (incl shoes)	135.00
T-Shirts	490.00
Training	9,965.00
Uncategorized	60.00
TOTAL INCOME	18,391.50

EXPENSES

Administration	616.50
Bouldering Contest	300.00
Capital Exp (mntnrg)	206.14
Classification	537.00
Equipment Maint	63.00
Insurance	350.00
Library	40.00
Merchandise Exp	0.00
Mountaineering	70.57
Newsletter	2,008.99
Outings	100.00
Programs	3,439.15
Service/Bank Charge	54.06
Training	6,139.07

TOTAL EXPENSES 13,924.48

OVERALL FOR YEAR TO DATE 4,467.02

ACCOUNT BALANCES (7 Sep 04)

CD Account	5,235.71
Savings	1,668.32
Checking	13,057.32

TOTAL CASH ASSETS 19,961.73
Other Assets (Library and gear) 5,967.75

OVERALL TOTAL..... 25,929.48

Queen Creek climbing area access issue

Climb it? Or mine it?



Recreational access to the Queen Creek climbing area is being threatened by a copper mine that has been proposed by the Resolution Copper Company.

Resolution Copper is trying to take over Oak Flat campground via a congressionally legislated land swap, which in turn would threaten access to all these areas: Queen Creek Canyon, Apache Leap, Devils Canyon, Hackberry Canyon, etc.

We need your help to keep this world-class climbing area (and home of the Phoenix BoulderBlast) from disappearing forever into a big hole in the ground. Join the Friends of Queen Creek!

We are not opposed to mining. But we are FOR ACCESS! We need to make Resolution Copper develop their mine in such a way as to preserve recreational access to these public lands.

Be a Friend of Queen Creek. Act now to help preserve access to your public lands by subscribing to the Friends of Queen Creek FREE e-mail action list at info@friendsofqueenecreek.com

www.friendsofqueenecreek.com

The AMC is represented on the Steering Committee of Friends of Queen Creek.

REMEMBERING BILL STINSON

We have recently lost an important member of our club, Bill Stinson.

He was instrumental in the founding of our yahoo group. He also assisted me in facilitating communications with the AMC board in the development of our new website. I relied upon him many times for things I did not have the time or patience to pursue. Bill was also the treasurer of our club at the time. He volunteered his time endlessly until the completion of our project, never letting me down.

Bill was also a friend, a confidant, an ally. We spent time discussing technical issues which he relished in sorting out. He went on to create a website of his own and wrote the code for the ATV club he belonged to. He also assisted with the clubs recreation, ousting a stagnant leader and breathing new life into it for the joy of others to follow. He fought for what was right and never backed down in the event of confrontation. He was an admirable person,

a quality human being who never lamented but just kept pushing on to pursue the next task toward accomplishment.

With our busy lives, we both went our ways, yet kept in touch now and then. Who would know that the last time I saw him drive out of The Monastery on his motorcycle earlier this year, would be the last time I would see him. We had discussed the sales of a tent from a post on our Yahoo group March 13.

I wanted to let everyone know how important his efforts were. ~ Thank you Bill ~ for all the work you have done for our club, on the yahoo group and for all your assistance in helping me get our new website up and running. It's going to be tough to find someone to fill that ATV seat you've left behind. It's hard to believe that I won't be able to call you at Blackboard anymore and "talk-tech". Not many people share the understanding of this language and even fewer of us know the language that you speak right now.

Happy trails Bill Stinson...my appreciation and good thoughts will always be with you.

Kirra

Mount Hayden in a weekend ... plus

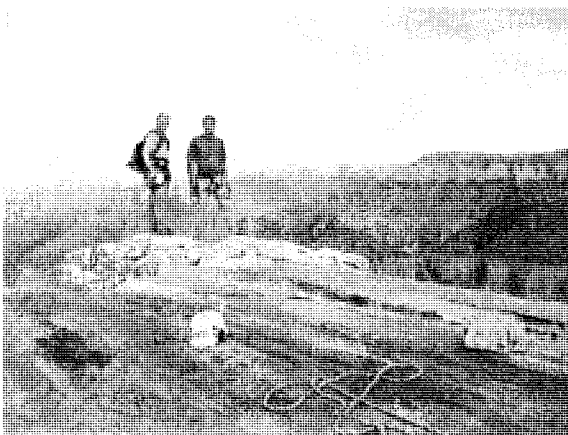
Being an avid back country hiker in the Grand Canyon for more than 13 years when I first joined the AMC 2 + years ago I heard about rock climbing in the Grand Canyon and for me it was the ultimate. A combination of physical challenge and beauty of nature I wanted to experience. When I first heard of Mt. Hayden and its 5.7 route on the South East side I began talk about attempting it and was able to eventually find two other AMC members Mike Knarzer and Ryan Braasch to join in. Mike and I have been talking about Mt. Hayden for more than two years when on Memorial day weekend we drove up on Thursday night, camped in Lee Ferry under a Navajo jewelry outpost and arrived at the North Rim's back country office early am.

Mt. Hayden is 8000+ ft. elevation at it's peak viewable from the Canyon's North rim at Point Imperial. First ascended in 1969, it is the most prominent feature looking out from the Point Imperial overlook. I noticed first how close the peak is to the overlook. It barely looks like a 15 minute walk — in fact it's about two miles and 2000' in elevation.

We left the parking lot with permits for overnight in early afternoon with plans to arrive at the base and fix the first pitch and summit on the following day. In 2000 there was a fire at the Point that changed the look of the approach. According to our beta: it had left the slope in front of us strewn with burnt timber and ash. Our beta said to leave the parking lot work your way East and to fight the temptation to enter the first bowl or drainage but pick second. Well, we ended up east almost to Woolsey Point when we realized we were way too far and should have entered the bowl directly from the parking lot. Working our way back west we droour way back west we dropped into the first

realizing it was one of three. Two of them cliff out and it's the middle one we want. Daylight was burning and we were committed to play out this drainage. We had used most of the daylight left when we realized we were cliffed out. Returning to the parking lot there is no way express how difficult the steep terrain covered in thorny brambles and fallen timber is to traverse with heavy packs. Denied, I've never seen such a despondent group of weekend warriors.

The rest of Memorial Day weekend played out in Zion National Park with some Cayoneering and rock climbing. Eventually our spirits rose and we committed to returning to Mt. Hayden in three weeks.



The light is almost gone — we have three long rappels yet and a one-third mile bush-whack to our packs and venison-noodle soup. Then morning will bring an arduous, brambly, ashy, sweaty six-hour climb out to Imperial Point. Life is so good!!

Leaving Phoenix Friday after work after packing and preparing all week the three of us were on the road before 7PM. Pizza and beer in Flagstaff and on to the North rim. We crashed South of Jacob's Lake just after 1AM.

Up with the sun we were at the back country office before 7AM but had to wait until 8 when the office opens so we started arranging our gear and topping off water. Permits in hand we drove to Point Imperial and were back in the bowl by 9:30.

This time we knew where we wanted to go: one drainage west of the one we cliffed out on Memorial Day. We made good time getting to its mouth but before feeding out onto the easy and bramble-free hermit shale we ran into a down climb where we had to lower packs. A climbing rope and a biner made quick work of it and we were again on our way. more steep. fallen timber, head-high brambles and then the *promised land* — hermit shale never looked so good. We walked the ridge approaching Mt. Hayden, found a place to shed our packs about 1000 yards in front of the peak and began getting our gear in order. (Contd on page 14)

Enchanted Tower

I had a rough week before the trip due to a serious intestinal virus. I called Frank Vers and Joe Garcia and informed them that I wasn't going, and Frank agreed to replace me as Outing Leader. (My son, Andrew, was very unhappy because he had looked forward to the trip all summer.)

Saturday morning, I awoke feeling better so I asked Andy if he still wanted to go. He said, "yes Dad, of course!" It took us 8 hours to get there, with an hour worth of stops due to traffic and accidents. We pulled into Enchanted Tower at 4:30 p. m. with Andrew making his desires to climb that afternoon very clear. We went looking for the AMC group, but there was no sign of them. We made the best of it, and Andy lead four routes. I followed and cleaned them. For once, I was the belay slave.

Later that night, Frank and I met like two great kings following a battle, rejoicing over victories and discussing failures surrounding the sport we both love so much—climbing!!! We made a fire and sat around and told stories and jokes. We discussed where to climb the next day. I informed Frank that I was going to get an early start at Mother Goose Wall, because it had several easy routes for Andy to lead.

Frank ended up taking the troop to Ugly Duckling Boulder because it was in the sun. As the day went on, so did the heat; so we sought shade. Frank wanted to climb on the Main Tower itself, so the two of us went over there before the crowd showed up. After Frank lead his 5.11c and I did my 5.12b, we moved over to Rapunzel's Wall for Andy to lead (and others to enjoy). Afterwards, we went to Frog Prince where I worked on a 5.13c; but I didn't get the red point (next time). Frank and I decided to call it a day and went back to camp.

It was a beautiful night. Like a bowl of milk spilled on the ground, the sky was thick with stars. This part of New Mexico is very beautiful, with meadows full of tall, green grass, and fragrantly-divine flowers. It was like a painter's palette.

Monday, I awoke early because I wanted to put up some new routes. I felt the Land Beyond lacked enough moderates. So I spotted the new lines, found a way on top, set anchors, and rap bolted the two lines before Frank and company arrived. I then led them and Frank got the second ascent of the two. The first route was a 5.9 which I named Fata Morgana, to retain the themes of Enchanted Tower. Second was a 5.10a named Paschendale. (Paschendale was a battlefield where much more blood was shed than will, hopefully, occur on this route.)

We climbed about six routes each and decided to go home.

I would like to thank the following for coming and sharing their Labor Day weekend with Andrew and I: Joe, Katherine, Biz, Scott, Jason, Mary, Frank, and Philip. Thanks for an outstanding trip!

—Richard Horst

BIG YARD, ANYONE??

Hey AMC-ers!

Basic School is underway and I'm still looking for someone who is willing to host the Basic School graduation party. Party date is Saturday, October 23 from 6 pm - 10 pm. We sometimes have 50-70 people for the party, with potluck food and drinks. You should have a grill that we can BBQ on (we can provide charcoal), a cooler or two for party beverages, and room to accommodate all the party goers. It doesn't have to be fancy, but it would be nice to be in a central location.

If you'd like to host the party, please contact me at 480-425-9689. Alternately, you can send a message to the club's email address:

azmountaineering@mindspring.com.

Thanks,
Sally Borg Larimer

Thanksgiving at Joshua Tree an AMC Tradition

Thanksgiving at Joshua Tree is an AMC Tradition. Why you may ask? The climbing at Joshua Tree is in one word -AWESOME! And the Thanksgiving Dinner is a gustatory delight of epicurean heights. Come and share in this great tradition.

The climbing Hundreds of routes that range from easy top rope 5.7s to hangnail 5.12s. Lots of leads to test your skills. No need to worry about approaches, how about a "bumper belay" while surrounded by beautiful climbing walls. Check out the following web page at: <http://climbingjtree.com/> for route beta, directions, camping, local activities and other information.

Thanksgiving Dinner will be held Thursday November 25th. Clay Vollmer is the Dinner Coordinator. He will fry up an 18-20 lb turkey on site served with cornbread dressing and gravy. The Dinner at JTree is potluck so here is your chance to contribute your favorite recipe and bring other items needed. Sign up with Clay to bring side dishes, salads, breads, desserts, and meats. Dishes should be prepared and ready to serve. Bring your stove to keep food warm. Non-food items also needed include: folding tables, lanterns, tablecloths, firewood and water to wash up with. Bring your own utensils, beverages, dishes, and a chair. Contact Clay at: vollmer@rice.edu or phone at 602-595-7266.

Camping/Lodging Details:

Some folks may go out early; you can drive straight from work in 5 hours. There are usually about 40 to 60 AMC'ers in attendance; some folks go all week, some go for a day or two. If you go before Wednesday, make your own camping arrangements at <http://reservations.nps.gov/> or by phone at 1-800-365-CAMP.

Motel 6 has rooms with 2 queen beds see: <http://www.motel6.com/>

AMC has the following sites reserved from noon Wednesday, 11/24 through noon Sunday 11/28:

Indian Cove group sites 6, 7, 8 and 10. That gives a total capacity of 75 people and 26 cars. If we're lucky whoever has site 9 might be willing to swap for 10 and then we have four group sites in a row. Otherwise they'll have to put up with crazy people in plaid on all sides.



This photo encapsulates the spirit of AMC's annual Thanksgiving outing at J-Tree. It shows the setting sun as reflected in Monica Miller's car's rear view mirror. She reported that when she spotted the opportunity for the shot and set about getting it, several others wrested her camera away from her to conceptualize, discuss, focus, adjust apertures, frame, etc. Turned into a kind of creative brawl. So the idea and camera are by Monica Miller but credit for the execution — anonymous? It is a fun time with fun people.

PLEASE NOTE: The maximum car limit will be strictly enforced. The park has adopted a new system where each car in a group site must have a parking permit in order to park there **CAR POOLING IS THE WAY TO GO.**

We will post a list along with the number of parking permits for each site on Wednesday morning. Space is very limited. When you arrive, if there are permits left, you can take one, but please sign your name on the list so we'll know who has all the permits. All campsites are primitive, no water or

(Continued on page 11)

AMC'S PROPOSED BUDGET FOR 2005

INCOME

Uncategorized	
Advertising	200.
Dues for 2004	7,000.
Interest	50.
Library finesw	20.
Merchandise	
Decals	50.
T-shirts (AMC)	500.
T-shirts Grand Canyon	500.
Total	1,050.
Program Income	100.
Rental Income	
Rental equipment	100.
T&S school Rental Income	250.
Total	350.
Training Income	
AARS	
Fall	1,875.
Spring	1,875.
Total AARS	3,750.
Basic School	
Fall	6,650
Spring	6,650.
Total Basic	13,300.
Lead School	
Fall	1,125
Spring	1,125
Total Lead	2,250
Navigation Clzss	200.
Mountaineering Schools	400.
Net Activities Income	28,670.
Transfer from Checking	5,775
TOTAL INCOME	34,445

EXPENSES

Land Advocacy Committee	
Membership	900
Operations	250
Special requests	500
Total Land Advocacy	1,650
ADMIN EXPENSES	
Uncategorized	
Food	500
Other	200
Postage	100
Printing	300
Promotion	150
Telephone	500
Website	400
Total Admin	2,150
Bouldering Contest	500
Capital Expenditures	
Mountaineering	300
Outings	500
Rental Equipment	100
T&S Capital Equipment	500
Total Capital Expenditures	1,400
Classification	
Certifications	625
First Aid Renewal	500
Total Classification	1,125
Equipment Maintenance	
AMC Gear	50
Rental Gear	100
Total Equip Maintenance	150
Insurance	7,000
Library	200
Merchandise Expenses	
T-Shirts AMC	700
T-Shirts Grand Canyon	300
Total Merchandise Expense	1,000
Mountaineering Expense	200

(Continued on page 13)

J-Tree Thanksgiving (Cont. from p. 9)

electricity. If possible bring wood for evening campfires.

The towns of Joshua Tree and 29 Palms are about 20 minutes away if you need a meal, motel, or shower. Showers are available in several places (enter the addresses below in MapQuest and take the map with you to JTree): Additional info on restaurants and other amenities can be found at <http://www.friendsofjosh.org>.

Coyote Corner (at the intersection of Hwy 62 and the park entrance road, across from Nomad Ventures) 6535 Park Blvd, Joshua Tree, CA 92252 760.366.9683

Safari Motel
61959 29 Palms Hwy Joshua Tree, CA 92252
760.366.1113

Directions: To get to Joshua Tree National Park, go towards Los Angeles on I-10 passing through Blythe and Desert Center. Watch for the Joshua Tree Cottonwood entrance (exit/mile marker 168). There is a \$10 entrance fee for a seven-day pass for a vehicle. Drive about one hour north through the park to a 'T' intersection. Go right (north) at the 'T' intersection to 29 Palms. Then go left (west) on Hwy 62 through 29 Palms to the turnoff to Indian Cove (left, south) from Hwy 62. If you reach the town of Joshua Tree, you have gone too far.

Weather is variable. Days are usually warm and sunny, nights will be chilly to freezing, and it is usually windy. Nothing is certain, so be prepared to get scorched, rained on, or whatever. There are numerous guidebooks available in the local shops; it is a good idea to own one for the correct portion of the park.

— *Monica Miller*

Alpine Seminar Schedule

Erik Filsinger will coordinate a series of sessions on mountaineering, one each month, at the Pyle Center in Tempe — if demand warrants. The series will be open to all.

Meetings will run from 7 to 8:50 p.m., the 2nd Wednesday of the month from November to June. Pyle Adult Recreation Center is located at 655 E. Southern, the SW corner of Rural and Southern, in Tempe. (Southern is the light north of U.S. 60.)

The intent is for the evening's presenter to give a brief lecture that generates a discussion among participants. The hope is to learn from each other, as well as from the formal presentation. (I probably will be the presenter, at least to begin, but if someone has an interest in presenting a topic, please let me know.) More info from smorefil@aol.com. Textbook: *Mountaineering: Freedom of the Hills*. (preferably the 7th edition) Cost: \$30 for the series or \$5 per night to cover expenses

November 10 - Clothing Systems, Chapter 2, Clothing and Equipment

December 8 - Avalanche Awareness, Chapter 26, The Cycle of Snow, Chapter 27, Mountain Weather

January 12 - Expedition Planning, Chapter 3, Camping and Food, Chapter 20, Expedition Climbing

February 9 - Winter Camping, Chapter 3, Camping and Food

March 9 - Conditioning, Chapter 4, Physical Conditioning

April 13 - Judgment and Accidents, Chapter 21, Leadership, Chapter 22, Safety

May 11 - Glacier Travel, Chapter 16, Snow Travel and Climbing, Chapter 17, Glacier Travel and Rescue

June 8 - High Altitude Medicine, Chapter 23, First Aid

NOTE: The events and schedule may be subject to change as conditions warrant.



Arizona Hiking Shack
11649 N. Cave Creek Rd.
Phoenix, AZ 85020
Phone: (602) 944-7723
www.hikingshack.com

We're located 1/8 mile south of Cactus
on Cave Creek Rd.

Three great reasons to shop at the Arizona Hiking Shack for all your climbing gear

- 1. The Arizona Hiking Shack has **IN STOCK** the largest selection of climbing gear in the Valley.** Petzl, Metolius, Black Diamond, Misty Mountain, Omega, DMM, 5-10, Scarpa, La Sportiva, Yates, PMI, Sterling, 2-Cam, Climb Tech, Kong, Trango, Camp, Marmut, Boreal, Pica Mountaineering, and Trango are just a few of the brands we carry. If we don't have what you need in stock. . . we'll order it for you. . . with FREE shipping!
- 2. The staff at the Arizona Hiking Shack are climbers too.** You get knowledgeable, friendly advice on gear, places to climb, and the absolute best fit on harnesses, shoes and helmets. The Arizona Hiking Shack is locally owned and has been selling gear to valley climbers since 1972. We take pride in helping to select the right hardware for your climbing adventures. (Besides most of us are AMC members also!)

At the Arizona Hiking Shack, AMC Members get a 15% discount on everything they buy, everyday of the week, every week of the year. Why? Two Reasons. First, we respect the job the AMC does. The AMC not only teaches people how to climb safely, they also teach an ethic of responsibility to the outdoors that is essential to keeping our climbing areas open. Second, you learn to climb in the valley. . . well, like it or not. . . we consider you one of OUR homeboys or girls and simply said, we want your business! Ultimately, we know you have many choices when it comes to purchasing your equipment and by having a great selection of gear, a knowledgeable staff, and totally killer deals, we hope you'll come shop with us.

Climbing Anchors School

Arizona Mountaineering Club

Fall 2004

The AMC Climbing Anchors School teaches participants how to set climbing anchors for top-roping. This course is the logical next step for AMC Basic Climbing School graduates.

Class curriculum:

- Tuesday: Learn anchor components, anchor types, knots and hitches.
Thursday: Learn anchor system characteristics and construction.
Saturday: Gain experience setting anchors by practicing "hands-on" scenarios under supervision.
Sunday: Apply new skills setting real anchors on an optional climbing day— a climbing outing where students set anchors under instructor supervision and then spend the day climbing.

Class schedule:

Nov 9	Tuesday	6:30 pm–9:30 pm	*Dreamy Draw Park (Phoenix)
Nov 11	Thursday	6:00 pm–9:30 pm	Dreamy Draw Park
Nov 13	Saturday	8:00 am–4:00 pm	North Scottsdale
Nov 14	Sunday	7:00 am–5:00 pm	Climbing area to be announced during class

*To get to Dreamy Draw Park take SR 51 (Piestewa Peak Freeway) to Northern; turn east on Northern. This takes you directly into the park. Class is at the big ramada.

Experience required: AMC Basic School graduate or equivalent, which must include knowledge of how to belay, rappel, prusik, tie a figure-8-on-a-bight and figure-8-on-a-follow-through, and make a girth hitch.

Cost: \$75 plus membership if not already a member (\$25 for an individual and \$30 for a family). Membership is good through Dec., 2004. Register by sending a check payable to AMC Anchors School to 1654 W. Boston St. Chandler, AZ, 85224. No credit cards accepted. The registration fee is fully refundable if you cancel. Call Nancy Birdwell at 480-821-1932 or email info.anchors.school@AzMountaineeringClub.org for more information. The number of students will be limited to 36.

Equipment required for the class:

- 2 non-locking "D" or oval carabiners (at least 2, bring more if you have them)
 - 3 locking carabiners (at least 3, one of which should be a parabiner)
 - 1 rappel/belay device (Trango Jaws, Black Diamond ATC, Trango Pyramid, Figure-8, etc.)
 - 1 climbing harness
 - 1 ea 4', 6', 10' 6mm prusiks (untied length)
 - 2 ea 5', 10', 20' slings (1" tubular webbing, untied length, AKA runners)
 - 1 or 2 personal anchor slings (commercial daisy chains or 4' sewn Spectra runners or equivalent)
 - 1 helmet—**required for Saturday and Sunday sessions**, helmets are available if you do not have one
- (The slings and harness are the only additional equipment needed over the Basic School requirements)

This class is designed to teach you how to set top-rope anchors. In order to become independent and set your own anchors, you should start acquiring anchor gear. These purchases will be limited by how much money you want/have to spend and how much interest you have in climbing independently. The following gear is not required for Anchors School, but if you have some, you will be able to practice setting it in class. All of the gear recommended below can be used for Lead School, and none of it will be wasted if you intend to set your own anchors. All gear should be marked prior to bringing it to class to prevent confusion between it and other people's gear. If you don't know how to mark gear, check with an instructor before doing so to avoid weakening equipment due to improper marking.

Other gear you may want to bring:

- Any pro you may have (hexes, nuts, camming devices, Tri-cams, etc.)
- Extra biners (regular D's, ovals, and lockers—stay away from specialty biners at this time)
- Extra slings (perhaps four 5', two 15' slings, untied lengths)

For more information: Visit the Arizona Mountaineering Club website at www.AzMountaineeringClub.org.

Mount Hayden Holiday — (Continued from page 7)

Our Beta told us to walk around the west side until reaching the South East face where there is an old piton pounded into the rock.

Mike, being by far the strongest climber, agreed to lead the entire route. We pooled gear, flaked rope, built our belay anchor, zipper stopper and he was off. It was 1PM. The first pitch was easy but after a bowling-ball-sized piece of sandstone just missed Ryan's head we realized how seriously dangerous this Coconino sandstone climb was going to be. At the top of the first pitch there was room for three. Mike took off again finding plenty of protection, belayed up Ryan and then led the third pitch before Ryan belayed me up to the top of the second.

I continued up the third where I cleaned Mike's placements on the crux move which was a stiff 5.7, a little overhung, but with a good hand jam I was over. Mike went on to scramble most of the fourth pitch while I belayed Ryan. Then Mike took a belay to make a couple of easy moves with little protection, then built his anchor and brought Ryan and me up to the summit table top. Whoo Hoo! There is a summit report in a glass jar that hasn't been signed since July of 2002 so we added our names for the record took some pictures and marveled at the beauty.

The sun was setting. One of our unspoken outing rules is never bring a time piece when we're out so best estimate it was 7PM, less than 6 hours after we started the first pitch.

Three long rappels went reasonably well — the last one was done in the dark when I "thanked" Mike for his good job leading by forgetting to tell him there was yucca underneath him as he reached the ground. The hike back to our packs was dark but there was enough moonlight. Ryan had brought a mason jar of pressure cooked venison and also some noodles he cooked up, enough for all of us to have something hot, ibuprofen and sleep came quickly.

Sunday Morning we slept in until the sun began to bake us in our sleeping bags. Some hot oatmeal, hydrate, we even tossed some water (to my distress) and then out. I've been up and down this approach four times now and I don't think there is an easy way. On the way down we went low; on the way up we stayed

high. Both were difficult, strewn with fallen timber and thorny brambles taller than me. In picking the drainage to exit we initially thought to hike past the one we came down to see if there was an easier one on the other side. But on reaching that drainage we found a wall of impenetrable bramble not unlike the one we just came through. We decided to go with a known quantity. The devil you know is better than the devil you don't.

Mike scrambled up the 5.0 rock climb with his pack on but Ryan and I elected to trail up a rope and haul our packs as the climb is hazardous enough without a pack. Slogging through the upper part of the drainage we saw a limestone ridge at its top and to its left (west). It made a great overlook where we had lunch. We noticed we could see the Imperial Point overlook's railing above us maybe a 1000'. We followed this ridge up directly under the overlook until, covered with black ash, ripped, torn, sweaty — but triumphant — we walked out into the parking lot where a bus load of elder hostel tourists offered us food for the disenfranchised homeless people they were sure needed their aid and comfort.

Ryan took GPS way-points at the bottom of the drainage for anyone who wants them. Beta is for the asking, I plan to do this trip again next year but a party of four is max on that loose Coconino sandstone. Big thanks to Mike Knarzer for the gutsy and well executed nimble lead and thanks to the AMC for teaching how to ascend and descend safely.

life is a highway,
—Scott Parsons

AMC accomplishes something good

Congratulations to John and Tiina Perlman. Tiina gave birth to Emily Katherine on Monday September 20th, 2004. Tiina and Emily are doing well. She gave birth with no drugs induced. The pain: "like climbing 5.15..."

John and Tiina met at the Queen Creek Clean Up Event in 2002. The Perlman's and baby Emily plan to attend the October 30th 2004 event.

September Lead School



Wayne Schroeter advises Isabelle Plante on pro placement at the September Lead Class at Watson Lake near Prescott. There were nearly as many instructors as students but, hey, it's as good an excuse as any to have fun. Cathy Sharp photo.

Instructors

Nancy Birdwell
Elizabeth Hardt
Samantha Hicks
Gabriel Howe
Mike Knarzer
Monica Miller
Jeffrey Nagel
Rogil Schroeter
Wayne Schroeter
Kathy Sharp
Shawn Swenson

Students

Julian Blum
Frank Christensen
Michal Danek
Scott Davis
Mark Driskell
Stacy Driskell
Chuck Flint
Alexander Hardt
Paul Mandel
Melissa Neubauer
Isabelle Plante
James Pyne
Gregory Sirek

Proposed AMC 2005 Budget (Cont. from page 10)

Navigation Class	450
	Newsletter
Postage	1,500
Printing	2,000
Total Newsletter	3,500
Outings	1,500
Outing Leader Expense	1,000
Programs: Monthly Meetings	5,000
Bank Charges	120
Training	
Equipment	4,500
Facilities	1,200
Food	500
Printing	800
T-Shirts & Incentives	500
Total Training	7,500
TOTAL EXPENSES	34,445

ANCHORS CLASS INSTRUCTORS PLOT

The Anchors School instructor's meeting will be held at 6:32 pm Wednesday, Nov 3rd, at Sally & Dave Larimer's house, 5617 E. Windsor Ave., Scottsdale, 480-425-9689.

Getting there: 5617 E. Windsor is one block south of Thomas, just east of 56th Street. From the 101, exit on Thomas and head west to the light at 56th St and turn left. The first left off 56th St. is Windsor. We're on the SE corner of Windsor and 56th Place. From the 202, exit on 52nd St and go north to Thomas. Right on Thomas to 56th St, right on 56th St, the first left off 56th St is Windsor.

See page 11 for times and places of the classes.



Phoenix 

HALLOWEEN

"Phlapper"
Fest 



Come join us October 30th & 31st at Oak Flats for camping & climbing with a twist. Climb in costume, costume contest, trick-or-treating from tents and jack-o-lantern contest.

All activities on the 30th. Clean up on the 31st.

This is a free event supporting Friends of Queen Creek.

Donations are not required but greatly appreciated.

For more info and/or to volunteer e-mail Javier Gonzalez at jsg21@cox.net or jgonzalez@c2dp.com.

Calendar of Events *(Continued from page 18)*

- Richard Horst at: horstrichard@aol.com or call 623-434-4769
- Nov 15 Membership Meeting at the Pyle Center, Rural and Southern in Tempe, 7:00 p.m.
- Nov 20 **The Hand** Superstition Mountains Razors Edge-3 pitches 5.6 Meet at Brueggers Bagels at Arizona Ave just South of Guadalupe at 6:30 AM. Limit 4 participants and 2 OL assistants. Contact Info: call 602-318-9538 or e-mail azfreedheart@aol.com HELMETS REQUIRED
- Nov 23-28 **Joshua Tree Thanksgiving**. Details page 9.
- Dec 4 **Courthouse Rock** Standard Route 5.5 Limit 3, with 2 OL helpers. Route with amazing exposure. Time and meeting place to be determined. Contact Info: call 602-318-9538 or e-mail azfreedheart@aol.com HELMETS REQUIRED
- Dec 11 **Granite Mountain, Prescott Swamp Slabs** 5.4 - 5.8 Single Pitch to Multipitch routes. Limit 4, with 2 OL Helpers. Meet at 6 AM at Safeway parking lot in Anthem in east end of parking lot towards the McDonalds. Stopping at Apple Pan, Too for breakfast in Prescott on the way. Long, strenuous hike to climbs, plan on brisk to downright frigid weather. Contact Info: call 602-318-9538 or e-mail azfreedheart@aol.com HELMETS REQUIRED
- Jan. 8 **Jacuzzi Spires Don't Bug Me** 5.6 -3 Pitches Limit 4, with 2 OL Helpers. Meet at 7:30 AM at Safeway parking lot in Anthem in east end of parking lot towards the McDonalds. Moderately long, strenuous hike to climb, plan on possibly brisk to downright frigid weather. Contact Info: call 602-318-9538 or e-mail azfreedheart@aol.com HELMETS REQUIRED

Billboard—Other Scheduled Events

Outings listed in this section are not AMC sanctioned outings. Any AMC member can list an event he or she is planning and which is open to other AMC members. The member does not have to be an approved AMC Outing Leader. If you wish to participate you should be physically and mentally prepared with the appropriate gear and should contact the member planning the outing. You are responsible for your own safety, not the person leading the outing. You should always be aware of the risks involved in outdoor activities and conduct yourself accordingly.

- Wednesdays North Mountain Hikes after work. Rogil Schroeter (623) 512-8465 or Oct 11
- Oct 30 Phoenix Halloween "Phlapper" Fest at Oak Flats sponsored by the Friends of Queen Creek. Camp overnight and party after AMC's Clean and Climb session that morning. See announcement inside.
- Nov 10 Alpine Seminar. Beginning November 10th and running the second Wednesday of each month, Erik Filsinger will offer an evening seminar based on Mountaineering: Freedom of the Hills at a site to be determined.. Each month a chapter from the book will be discussed, e.g., Expedition Planning, Clothing Systems, Winder Camping, High Altitude Medicine, Avalanche Awareness, etc. Contact Erik for topics, location, times, and dates by emailing him at smorefil@aol.com. Open to all.

Commercially Provided Training and Events

The events listed below are provided by commercial outfitters for the benefit of AMC members. They are not AMC Outings, nor are they led by AMC Outing Leaders, though they may be open only to AMC members. The commercial outfitter is solely responsible for all aspects of the outing, not AMC. While, in most cases, an AMC member may provide a service by AMC collecting the names of prospective participants and handling the logistics of out-of-town events, participants will sign up directly with the commercial outfitter.

(none listed)

Calendar of Events

AMC Outings

Participation in AMC outings requires club membership. Outings vary in degree of danger. When you participate in an outing you should be both physically and mentally prepared and equipped with the appropriate gear. You should always be aware of the risks involved in outdoor activities and conduct yourselves accordingly. The Outing Leader is not responsible for your safety; you are. Please contact the Outing Leader before going on an outing, discussing your capabilities with the Outing Leader. You must be over 18 years of age to participate, or must be accompanied by a parent or responsible adult, and obtain prior consent from the Outing Leader. Those accompanying minors are responsible for the minor's safety.

- Oct 23 **The Mace** 5.9+ located in Sedona, AZ - 11th annual ascent of this classic sandstone spire. Limit 4. Contact: Frank Vers at: 480-947-9435
- Oct 30 **Crown King**. Crown of Thorns area. (Nope, you won't find this one in the guidebooks.) Limit 6 participants plus 2 OL helpers. 1/2 hour approach. 5.5 to 5.10 climbs, single pitch on backcountry rock. Meet at 7 a.m. at Safeway lot in Anthem at east end toward MdDonalds. Jeff Nagel 602-318-9538 or azfreedheart@aol.com.
- Oct 30 **Queen Creek Clean up and Climb** - No limit 8:00 AM Meet at Mesa Community College Parking lot for car pooling. Or be at that Oak Flats Turn off from US 60 at 9:00 Am. Pick up trash for one hour then climb on some 5.7 to 5.11 climbs. Contact: Scott Hoffman 623-580-8909
- Nov 3 **Anchors School Instructors' Meet** at the Larimer's – see page 15.
- Nov 4&7 **Alpine Rock Seminar**. Skills involved in moving from rock crag to mountain setting. Should have AMC Basic School, AMC AARS and AMC Lead Schools, or equivalents. Enrollment via permission of instructor. Size limited. New students \$50. Returning students \$25. For details contact Erik Filsinger at smorefil@aol.com.
- Nov 6 **Scorpion Ridge** Another not in the guidebooks! Numerous 2 short-pitch routes ranging from 5.5 to 5.8 Limit 4 with 3 OL helpers. This is a great outing for those who just completed Lead School. Jeff Nagel. 602-318-9538 or azfreedheart@aol.com. Helmets Required.
- Nov 8 Board Meeting at the Monastery
- Nov 9 **Anchors School** Nov. 9, 11, 13 and 14.
- Nov 14 **Scenic Sedona Area** - Climbing at it's finest on 70 ft basalt cracks. Must be willing to climb up to 5.10 on trad routes. Off Schnebly road, short approach. Limit 12. For meeting time and place contact:

(Continued on page 17)

Outing Leaders

Requirements for becoming a leader: take the Basic, Anchors and Lead classes (or equivalents), be a member for at least one year, complete a basic first aid and CPR class (8 hours or more), and be approved for leadership by at least five current leaders through formal application process and by the Board of Directors. Contact Dave Larimer at (480) 425-9689.

Tom Conner	480-897-7623	David Larimer	480-425-9689	Rogil Schroeter	623-512-8465
Erik Filsinger	602-906-1186	Sally Borg Larimer ...	480-425-9689	Wayne Schroeter	602-402-1631
Jeff Hatfield	480-897-1750	Tim Medlock	719-494-1171	Jef Sloat	602-316-1899
Scott Hoffman	623-580-8909	Jeff Nagel	602-318-9538	Mick Strole	520-856-3335
Richard Horst	623-434-4769	Paul Norberg	602-808-9244	Rick Taylor	623-487-8507
David Johnson	623-486-7387	Paul Paonessa	602-493-7356	Frank Vers	480-947-9435
John Keedy	623-412-1452	Chris Query	602-323-5927	Tim Ward	602-212-1929
Tim Lange	480-598-9124	Tim Schneider	480-497-8377		

November 2004

AMC Outing Calendar

Sun	Mon	Tue	Wed	Thu	Fri	Sat
	1 <i>BOARD MEETING MONAS- TERY</i>	2	3 Anchors Sch In- structors Meet Sunrise 6:49	4 Alpine Rock Seminar	5	6 Scorpion Ridge
7 Alpine Rock Field Day	8	9 Anchors School	10 <i>Sunrise 6:56 Sunset 5:29 M-rise 4:45a</i>	11 Anchors School	12 <i>New Moon</i>	13 Anchors School
14 Anchors School and Sedona	15 <i>MEM- BERSHIP MEETING PYLE CENTER</i>	16	17 <i>Sunrise 7:02 Sunset 5:24</i>	18 <i>First Quarter</i>	19	20
21	22	23 J-Tree Thanks- giving	24 <i>Sunrise 7:09 Sunset 5:22 M-rise 4:04p</i> J-Tree Outing	25 J-Tree Outng	26 J-Tree Outing <i>full Moon</i>	27 J-Tree Outing
28 J-Tree Thanks- giving Outing	29	30				

Arizona Mountaineering Club
4340 E Indian School, Ste. 21-164
Phoenix, AZ 85018

November's meeting will be held at the Pyle Center in Tempe at Rural and Southern on the 15th.