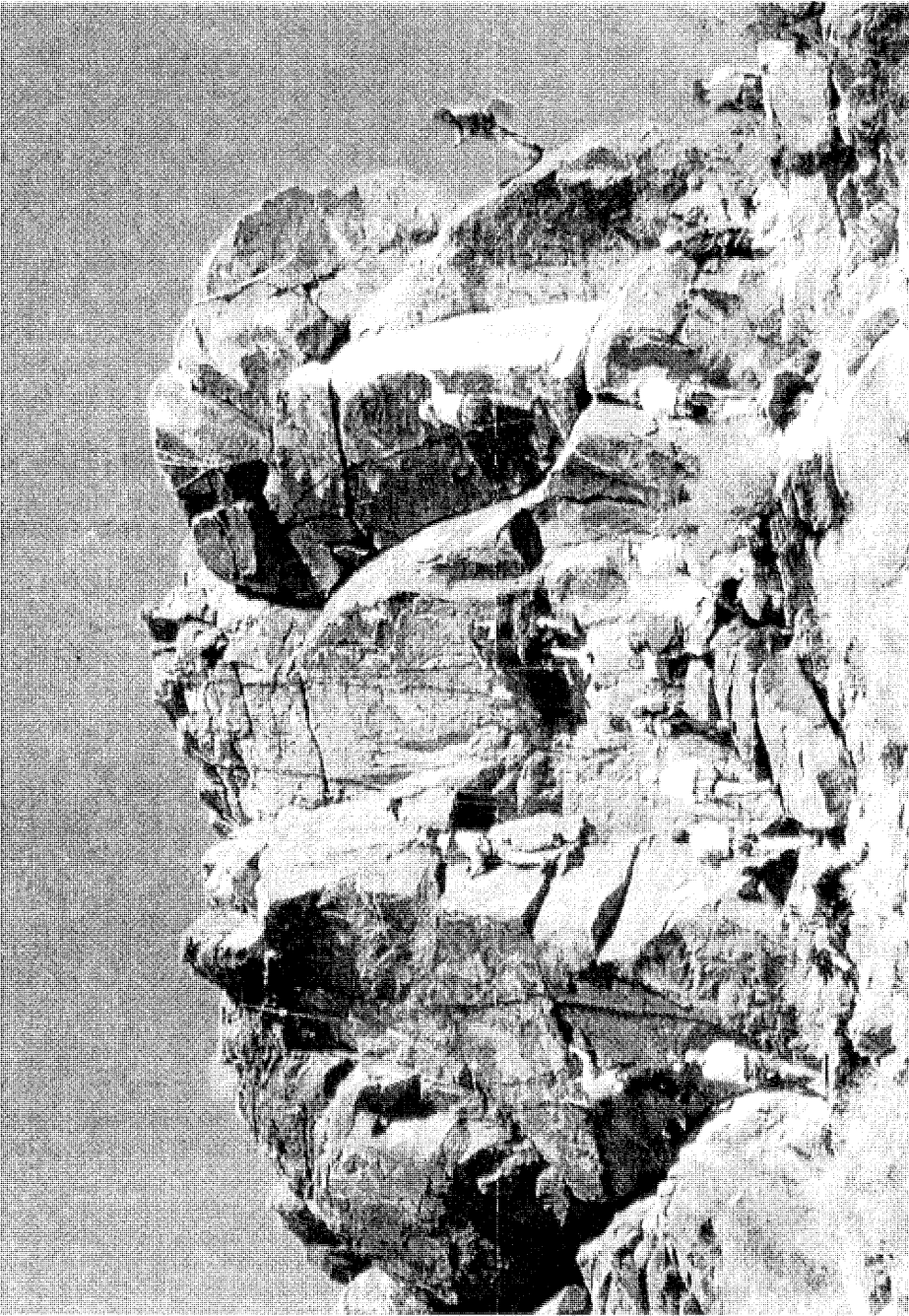


ARIZONA MOUNTAINEER

FEBRUARY 2006



Almost like the (very) old days when AMC'ers descended on the Carefree Boulderpile or Pinnacle Peak or Camel's head on a Saturday or Sunday and made a day of it. Everyone welcome! This 19 November outing at Teddy Bear Wall was conducted by John Keedy—plus helpers. I think I counted twelve top-ropes of which at least six are in use at this moment. Routes ranged from about 5.6 to 5.10. Great fun!

The Arizona Mountaineering Club

Meetings January meeting at the Washington Adult Center, 2240 W> Citrus Way, between Bethany Home and Blendale Aves. Off 23rd Ave at 7:00 p.m.

Board Meetings: Board meetings are open to all members and are held two Mondays prior to the Club meeting.

Dues: Dues cover January through December. A single membership is \$30.00 per year: \$35.00 for a family. Those joining after June 30 pay \$15 or \$18. Members joining after October 31 who pay for a full year will have dues credited through the end of the following year. Dues must be sent to:

AMC Membership Committee
6519 W. Aire Libre Ave.
Glendale, AZ 85306

Schools: The AMC conducts several rock climbing, mountaineering and other outdoor skills schools each year. Browse the AMC website for information on schedules and classes.

For More Information:

Call: (623) 878-2485

Email:

president@azmountaineeringclub.org
board@azmountaineeringclub.org

Websites:

www.azmountaineeringclub.org
or — www.amcaz.org

Mail:

Arizona Mountaineering Club
4340 E. Indian School Rd., Ste 21-164
Phoenix, AZ 85018

Board of Directors:

President..... John Keedy 623-412-1452
Vice-President Robert England .. 480-688-5412
Secretary Erik Filsinger 480-314-1089
Treasurer Clay Vollmer 602-595-7266
Director 2-year Dave McClintic.. 480-607-0890
Director 2-year Justin Iske 480-225-7739
Director 1-year Dave Van Hook . 602-790-6283
Director 1-year Bill Fallon..... 602-996-9790
Past President Jutta Ulrich 602-234-3579

Committees:

Archivist..... Jef Sloat..... 602-316-1899
Classification..... Nancy Birdwell.. 480-821-1932
Elections..... Dave Van Hook . 602-790-6283
Equipment Rental Erik Filsinger 480-314-1089
Email..... Tricia Rudloff 623-580-7740
Land Advocacy..... Erik Filsinger 480-314-1089
Librarian..... Richard Kocher.. 480-966-5568
Membership..... Rogil Schroeter.. 623-512-8465
Mountaineering..... Erik Filsinger 480-314-1089
Newsletter Wally Vegors..... 602-246-9341
Outings..... Frank Vers 480-947-9435
Programs Sheri Kenly 602-242-0504
Training & Schools.. Monica Miller 623-362-0456
 Basic Class Sally Larimer 480-425-9689
 Anchors Class..... Robert England.. 480-688-5412
 Lead Class Mike Knarzer..... 602-751-1701
T-shirts..... Sally Larimer 480-425-9689
WebSite..... Kirrawebadmin@amcaz.org

The AMC Land Advocacy Committee: The Committee works by itself and with the national Access Fund to maintain public access to climbing areas. If you know of areas that are threatened with closures or climbing restrictions, please notify the Land Advocacy representative Erik Filsinger, 480-314-1089.

The Access Fund: This is a national, non-profit, climber's organization that works to maintain access to climbing areas nationwide. Climbers can join The Access Fund by mailing an annual, tax-deductible donation of \$35 or more to: The Access Fund, P.O. Box 17010, Boulder, CO 80308, or calling 888-8MEMBER or giving it to the AMC Club Treasurer to be sent to The Access Fund in your name. A donation of \$35 or more is needed to receive *Vertical Times*, The Access Fund newsletter. One can also join electronically at https://www.accessfund.org/secure/joinnow/join_indiv.php or at <https://accessfund.org/join/indiv.php>.

This Month in the AMC

- 2..... Who does what, addresses and numbers
- 3..... Birthdays; Index
- 4..... Minutes
- 5..... Treasurer's Report; Discounts, Rentals
- 6..... Libeck Program next meeting
- 7..... Ice Class scheduled
- 8..... Minutes, contd.; Red Rocks Event
- 9..... Meeting Place Blues
- 10..... Basic School Details
- 11..... New AMC Officers
- 12..... Lead School Details
- 13..... Outings Contin
- 14..... Outings and meetings
- 15..... January Calendar

NOT STOPP!!

...from a COOL continent —
**Libeck gives March Meeting
Program at Phoenix Library,
Feb 27th.**

**Lead School this month;
Basic Classes to be next
month. Come Help!!**

Newsletter

The *Arizona Mountaineer* is published monthly by the AMC. Members are encouraged to submit articles and photos about their climbing- or mountaineering-related activities. Submit items for publication (subject to approval) to AMC Editor, 6151 N. 8th Ave., Phoenix, AZ 85013 or through email to azmountaineer@azmountaineeringclub.org. Prints are preferred over slides. Digital photos should preferably be in JPG format and 300 dpi. Articles can be in any standard word processing format. For more info call the editor at (602) 246-9341. wvegors@cox.net

Advertising in the *Arizona Mountaineer* is accepted, subject to approval, at the following rates. Personal ads are free to members. Business ads are \$5.00 for a business card, \$10.00 for half page, \$20.00 for full page, and \$25.00 for inserts.

Library

You must be an AMC member; i. e., your name must be on the most current membership list.

The circulation period is one month. Materials are due at the next general club meeting. The overdue fine is \$2 per title per month. Please contact the librarian if unable to return your books and tapes.

The circulation limit is three titles per person. One of these may be a videotape, for which a \$50 deposit is required. Each guidebook requires a \$25 deposit.

Mar. NL Deadline: 18 Feb.

FEBRUARY BIRTHDAYS

Sutton Demlong 3, Chris Kline 3, Melody Moses 3, Voytek Ciula 5, Scott Frankel 5, James Keeley 5, Sharon Gordon 6, Julie Dehlin 7, Brad Rutkowski 7, Kurt Gusinde 9, Michael Palagonia 10, Donald Gotelli 11, Brian Waichunas 11, Michael Baker 12, David Cameron 12, Daniel Gonzales 12, Linda Kriegel 12, Douglas Roill 13, Christine Bolick 14, Alex Richards 15, Jonathan Houf 16, Clare Norman 19, Richard Balland 20, Janice Burns 20, John Schneider 23, Travis Bloedel 25, Sean Colonello 25, Robert Lea 25, Jim Kline 26, Paul Buckley 27, Scott Hoffman 28, Paul Pacheco 28, Gregory Sirek 29

Minutes of the AMC Board Meeting: 9 Jan, 2006

Attendees:

Board Members - Jutta Ulrich, John Keedy, Bill Fallon, Clay Vollmer, Robert England, Bruce McHenry, Jeff Nagel

Committee Chairpersons:

Equipment Rental, Land Advocacy, and Mountaineering – Erik Filsinger

Newsletter – Wally Vegors

Elections – Dave Van Hook

General Membership – Monica Miller, Mike Knarzer

Call to order – 7:00

Reviewed minutes from the December Board meeting.

Motion to approve the minutes - John Second – Robert Approved

President's Updates:

Representatives from the PF Chang's Marathon requested general volunteer assistance from any interested AMC members.

Tim Kovacs from Mountain Rescue has requested AMC volunteer assistance to transcribe the Mt Humphreys Fatality Analysis from hard copy to electronic format.

Committee reports:

Classification – Discussion regarding outing leader applicant eligibility.

Clay made a motion to waive the one-year membership requirement to *submit* Top Rope Outing Leader candidate applications in the cases of Justin York and Jason Garvin.* John seconded the motion

The motion is approved. There was one vote opposed.

*This motion was made using the board's option to exercise discretion under this policy.

Membership – 419 members as of January 2006

Elections – Dave Van Hook presented the proposed ballot for 2006 elections. Candidates noted on the 2006 ballot include John Keedy for President, Robert England for Vice President, Clay Vollmer for Treasurer, Erik Filsinger for Treasurer, Jutta Ulrich for Past President, Dave McClintic for Director (1 of 2 2-year positions), Justin Iske for Director (2 of 2 2-year positions), and Dave Van Hook for Director (1 year position). Jutta Ulrich was removed from the ballot for Past President, as this is not an elected position.

Bruce made a motion to adopt the ballot as presented minus the position of Past President. Bill seconded the motion. The motion is approved.

Yahoo Groups – Bruce is the new Moderator of the Committee Chairs and Outing Leader Yahoo Groups

Library – Housing the club's library continues to be a problem as long as we do not have a relatively permanent meeting place. Finding such a location is an ongoing effort and continues to be a top board priority.

Newsletter – Wally reported that Hiking Shack will discontinue their advertisement in the newsletter. Wally presented a comprehensive report on the state of the newsletter including overall content, printing/ assembling/delivery issues, and the need for assistance. Board members were directed to review Wally's report and continue the discussion at the next board meeting.

Land Advocacy

Discussion regarding the AMC's continued adoption of a portion of the highway adjacent to the Queen Creek climbing areas on Highway 60. The board requests Tiina review and update information as necessary for the AMC to continue its adopt-a-highway role.

Training:

The Training and Schools Committee Chairperson and Lead School "Lead Instructor" positions are vacant. Monica expressed interest in the Chairperson position and presented a comprehensive resume of climbing experience as background. Mike Knarzer expressed interest in the Lead School "Lead Instructor" position and will work with Monica to gather more information.

Robert made a motion to appoint Monica Miller as the next Training and Schools Committee Chairperson. Clay seconded the motion. The motion is approved. Congratulations to Monica!

Training site locations

Robert continues to explore opportunities for the board to meet with State Land Authorities regarding permit issues and the associated use of long-established training areas in North Scottsdale at Little Granite Mountain.

Discussion was held regarding Robert's scouting trip to the Boy Scouts Heard Pueblo (pun intended) as a possible site to conduct training activities. Robert will post photos from his visit on the AMC Board yahoo group site for review. Discussion regarding this and other potential training sites will continue in the T&S committee. (*Contin. P. 8*)

Discount Directory

The following merchants currently offer a discount to AMC members:

Arizona Hiking Shack—11645 N. Cave Creek Rd., Phoenix, AZ 85020, (602) 944-7723. Show your AMC membership card and get a 10% discount.

AZ on the Rocks Gym — 16447 N. 91st St., Scottsdale, AZ 85260. 480-502-9777. Gym membership 10% off for AMC members.

OvertheCrux Inside Phoenix Rock Gym at 1353 E. University Dr., Tempe.. 480-890-0997. 15% off to AMC members.

Solid Rock Gym — 23620 N. 20th Dr, Phoenix, AZ 85027 (623) 587-7625 Gym membership 10% off for AMC members.

Rental Equipment

EQUIPMENT.....	Qty	\$Dep	1-3day	4-7day
MSR Alpine snowshoes.....	5	32	10	16
Ice Crampons	5	26	8	13
Ice axes (70 cm).....	6	16	5	8
Ice axes (90 cm).....	5	14	5	7
Snow shovel.....	1	8	3	4
PortaLedge	1	100	30	50
Climbing shoes ...	Various sizes .. Call			

Equipment Rental Policy: All equipment rentals shall be only to current AMC members. AMC members renting equipment shall contact the Rental Committee Chair and arrange a time for pick-up and drop-off of rentals. Rental rates shall be as published in the AMC Newsletter. Two checks shall be collected from the renter. The first being for the rental amount. It will be placed into AMC accounts. The second check shall be a deposit held against the return of the item. It will be held and given back to the renter upon return of the equipment. If the return is not timely, is damaged, or is lost, the second check shall be held against the late amounts due or against any replacement or repair required. The AMC Member renting the equipment shall be expected to replace any lost or damaged equipment.

An AMC rental form (found under the Forms section of the website) will be used and will identify the name and contact information of the renter, the items rented, the rent due, as well as the replacement cost, along with statements indicating the renter's responsibilities for returning or replacing the items. Call Linda Locke at (602) 997-4235 for shoes. For everything else, call Erik Filsinger at 480-314-1089.

Treasurer's Report

Statement of Operations

Jan 1 to Dec. 31, 2005

Category Description	Amount
INCOME	
Access.....	202.00
Advertising.....	170.00
Dues 2005.....	6,856.00
Return of NSF expenses.....	31.00
Friends of Queen Creek	320.00
Interest	122.01
Merchandise (Tee Shirts & Etc).....	591.00
Mountaineering Schools	1,012.00
Rental Income (incl shoes).....	163.00
T&S School Rental Income	255.00
AARS Spring	2,475.00
AARS Fall.....	1,275.00
Basic Spring.....	5,280.00
Basic Fall.....	4,000.00
Lead Spring.....	750.00
Lead Fall.....	1,200.00
Navigation.....	150.00
First Aid Class.....	60.00
Other.....	10.00
TOTAL INCOME	24,922.01

EXPENSES

Access Fund Payment.....	202.00
Administration.....	1,255.88
Capital Exp., Depreciation	4,299.96
Classification.....	1,030.00
Equipment Maint.....	113.00
Friends of Queen Creek	320.00
Insurance.....	4,337.25
Land Advocy Comm	400.00
Library.....	30.00
Mounfaineering Comm	93.30
Newsletter	3,648.44
Outings	430.99
Programs & Monthly Meeting Exp	4,731.83
Service/Bank Charge.....	73.00
Training	3,438.83
TOTAL EXPENSES	24,404.48

OVERALL FOR YEAR TO DATE 517.53

ACCOUNT BALANCES

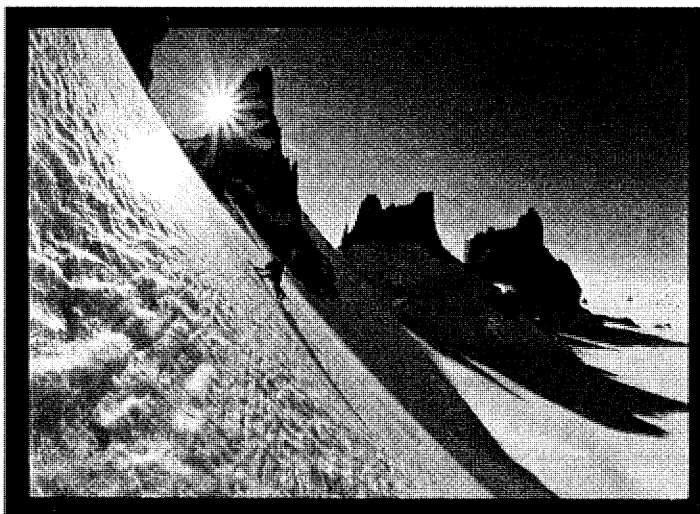
CD Account 1/21/06.....	10,121.73
Checking12/31/05.....	11,948.13
TOTAL CASH ASSETS	22,069.86
Other Assets (gear).....	2,251.71

OVERALL TOTAL 24,321.57

AMC Programs is proud to bring back:

Mike Libeck

The Year of the Rooster Expedi- tions



China/Kyrgystan: Mike and his brother went to search out a virgin area of the Tien Shan Mountains. The magical experience with the local Kyrgyz nomads, virgin big wall ascents and reconnaissance to an unknown area of the planet exceeded their expectations. Add in two banjos for daily live music, and it will be an expedition experience of laughter and beauty in every way.

Solo Antarctica: This is one of Mike's pinnacle expeditions. He was the first to go solo to Antarctica for big wall first ascents. This show emanates the intensity of living in temperatures colder than our freezers for six weeks while trying to climb unique big walls and towers, completely alone.

Access Fund Raffle/Auction: Mike is a big supporter of the Access Fund and has ALWAYS brought an amazing amount of gear to be given out to lucky ticket holders. Bring your \$1's, \$5's, \$10's, \$20's and dare I say \$50's to support the organization that is *the* voice for climbers. **P.S.:** Bring extra change for one of the amazing T-shirts made for each of his "The Year of" Expeditions.

NEW LOCATION: 7:00 PM, Feb. 27th, **Burton Barr Public Library 1221 N. Central Avenue.** Lecture Room is on the 4th floor. The library is south of McDowell on the East side of Central. From the 1-10 exit N. on 7th St. if you are headed west — or 7th Ave if bound east. — Big Building, you can't miss it.

Multi-pitch Ice Class Next Month — Sign Up Now

The weekend of March 11-12 the AMC has arranged with Southwest Adventures to offer Advanced Ice: Multipitch Climbing. Topics will include screw placement, anchors, rope systems, multi-pitch strategies, gear selection, mental attitude, belaying, and rappelling as it applies to descending multi-pitch ice routes. The first day will be a review and instruction on multipitch climbing issues. The second day will be a guided ascent of a classic multipitch ice climb, conditions warranting.

Course location will be in either Silverton or Ouray. Group will meet in Durango and then stay in Silverton hotels to be closer to the long ice routes.

Anyone signing up must have taken a Beginning Ice Climbing class or with permission depending on experience. The course cost would be \$345 per person, and would have a 2 person minimum. Client to guide ratio would be 2:1 max.

This is a great experience for those taking the President's Day Beginning Ice Climbing weekend and/or those who have done so in the past. Group gear and tools will be provided. Boots and crampons can be rented from SWA.

To begin the enrollment process, contact Erik Filsinger at _smorefil@aol.com (mip://036036b8/smorefil@aol.com) with a brief description of your ice climbing experience as of the March date.

Queen Creek climbing area access issue Climb it? Or mine it?



Recreational access to the Queen Creek climbing area is being threatened by a copper mine that has been proposed by the Resolution Copper Company.

Resolution Copper is trying to take over Oak Flat campground via a congressionally legislated land swap, which in turn would threaten access to all these areas: Queen Creek Canyon, Apache Leap, Devils Canyon, Hackberry Canyon, etc.

We need your help to keep this world-class climbing area (and home of the Phoenix BoulderBlast) from disappearing forever into a big hole in the ground. Join the Friends of Queen Creek!

We are not opposed to mining. But we are FOR ACCESS! We need to make Resolution Copper develop their mine in such a way as to preserve recreational access to these public lands.

Be a Friend of Queen Creek. Act now to help preserve access to your public lands by subscribing to the Friends of Queen Creek FREE e-mail action list at info@friendsofqueencreek.com

www.friendsofqueencreek.com

The AMC is represented on the Steering Committee of Friends of Queen Creek.

Red Rock Rendezvous in March

The third Red Rocks Rendezvous will take place near Las Vegas, Nevada, over March 24-26.th

It will offer shows, on-site clinics, feeds, sales venues, and general hoopla of interest to climbers, plus access to Red Rocks Canyon when not in use by clinics.

All activities other than the clinics will be held at Spring Mountain Ranch State Park. The clinics themselves will be conducted in the Red Rock Canyon National Conservation Area, 10 minutes down the road..

Attendance costs range from \$30 for a general walk-around pass to the Spring Valley activities to \$60 registration for the Saturday-Sunday events and clinics; and \$159 for an "Intro to Red Rocks" clinic plus sessions led by the likes of Roxanna Brock, Greg Child, Jim Donini, Mark Synnott, and Cedar Wright.

For considerably more information or to register, call 800-829-2009 or visit www.mgear.com/rrr. The event is sponsored by the Mountain Gear catalog people and by North Face.

Beneficiaries of the event include the Access Fund, American Safe Climbing Assn., American Alpine Club, Friends of Red Rocks and the Las Vegas Climbers Liaison Council.

More than 400 climbers are expected for this year's event.

Mar 25 - Queen Creek Cleanup and Climb.

Come cleanup a stretch of highway 60 at Oakflat and then Climb, . Meet at 8.00 am. To carpool at Mesa Community College South West most parking lot, Scott Hoffman-Outing leader. Any Q's call him (623) 694-8078 or arrive at 9.00 am at Oak Flat road turn off. Tiina and John Perlman (the "trashleaders" will wait you there with trash bags). Bring gloves. No limit

Board Minutes, Continued

Reviewed the Treasurer's report – Clay notes that the end of year report reflects a cash increase of approximately \$4817.00.

John made a motion to approve the Treasurer's end-of-year budget report. Bill seconded the motion. The motion is approved.

Old Business

Outing Leader t-shirts – Mike Knarzer will provide Clay with the approved Logo designs and Monica will work with Clay to select the fabric and proceed with ordering the shirts.

Outing Leaders – Discussion continues regarding the definition of active status, incentives, and dues waivers. The board supports in general the dues waiver incentive for outing leaders and activity leaders. Board members and committee chairs, included in the original discussion, are removed from consideration for dues waiver incentives.

Additional tasks:

Bruce/Robert: Develop a draft of OL/activity leader criteria for dues reimbursement

Jutta will work with Sheri to check out possible meeting places

Robert will compile the 2006 calendar for review at the February Board meeting; all members are asked to submit calendar items

Monica / T&S: Meet to discuss leadership for classes, locations, gear, etc.

Motion to adjourn: Jutta Second – John Approved.

Meeting adjourned at 9:05.

NEW MEMBERS

Kim McLachlan
Robin O'Neal
Ella Stockbauer
Ethan Stockbauer
Margaret Stockbauer
John Whiteside

Meeting, Oh Meeting, Where for art Thou...?

Have you found yourself pondering this question? As the Program Director, 3rd year running, this has been an ongoing question, problem, challenge....

AMC Meeting History: Okay, this is only my 9+ years experience in the club talking, so don't get too excited if I don't mention a location where you attended meetings prior to my being a member. We met for over 8 of those years at *Los Olivos Senior Center* and all the AMC'ers got fat, happy and comfy meeting at the same place. Then construction and a budget cut sliced us out of that location for the time unknown. They are no longer open evenings and since that is when we meet...you get the picture. While there was still hope of returning to our tried and true home we tried another Parks and Recreation facility, *The Pyle Center*, in Tempe and struggled for a number of months through very small rooms that did not meet our needs. Next was the *Pueblo Grande Museum*, a great location for East and West Valley members. They do not book very far in advance and charged \$200. I called them recently thinking we could hold some meetings in their VERY nice meeting room and was astonished to find that their room charge had escalated to \$500 per event. Ouch!

AMC Current Meeting Location: Currently, we meet at the *Washington Adult Center* near the I-17 between Glendale and Bethany Home Rd. It has a very large meeting room, but seems to scare off some of you from the East Valley and perhaps other Valleys, too. Well, too bad. Okay, that's not really my attitude, I just wanted to wake you up a bit and see if you were paying attention to this thrilling essay on meeting venues. Clench your fists with excitement for this next sentence. We are going to hold February and March meetings at, are you ready?, the *Burton Barr Central Public Library*!! Hooray!! Yes, right off the I-10 with easy access to the freeway, can you join me in a big 'whoop'? Who's your daddy now?! Yes, I'm well aware that my purpose here is to incite excitement where there isn't any, but you can't fault me for trying. No, you can't. Are you ready for bad news? Sit down... ready? Because the library does not book, (no pun intended), more than two months in advance, we will continue to use the Washington Adult Center as a back up. If you get confused about where to go on

any given month, read your newsletter, check the website (www.azmountaineeringclub.org) or phone random AMC members from the phone list. Oops, did I mention that on occasion we will have our 'meeting' at the Phoenix Rock Gym? Hope I didn't scare you, but I do hope to see you at the February meeting. We have a seasoned presenter whom is always well received for his amazing adventures. Thanks for those of you who made it to the end...and now for the quiz.

Sheri Kenly

SCREE by Wally

Sheri has identified what I consider one of the AMC's biggest problems. We NEED to be Fat, Dumb and, above all, Happy with a regular, don't have to even think about it meeting place, date and time.

And it would help a lot if we could store our library there between meetings as well. Practically speaking, we may as well not own our outstanding set of guidebooks, videos and manuals because no one can get at them. (Right now they have my reloading bench covered three boxes deep.)

Her job of snagging interesting speakers and shows is made harder by her uncertainty as to *when* the program is needed, how big a space will be needed, requiring what equipment?? A program chairman's lot is not an 'appy one under the best of circumstances. These circumstances are intolerable.

We have met in churches and their meeting halls at times. Library storage is a universal problem and being bumped by events is always a threat. We have met in the community rooms of banks and other businesses and, a few times, in government offices. None have been ideal.

Any ideas? Tell them to Sheri or a Board Member.

We really need a HOME!

Basic Rock Climbing School

Arizona Mountaineering Club — Spring 2006

The Arizona Mountaineering Club (AMC) has been teaching basic rock climbing for over 35 years. We place maximum emphasis on safety and self-rescue. This is a beginning climbing class. We will teach you equipment care and usage, rope handling, climbing knots, belaying, rappelling, climbing techniques, and self-rescue. Enrollment fills up quickly, so don't delay; make a reservation to join us soon!

Class schedule (this is 2-week class):

Mar 78	Tuesday	5:30 pm–10:00 pm	*Havasupai Ramada, North Mountain Park
Mar 9	Thursday	6:00 pm–10:00 pm	Havasupai Ramada, North Mountain Park
Mar 11	Saturday	8:00 am–5:00 pm	North McDowell Mountains, Scottsdale
Mar 12	Sunday	8:00 am–5:00 pm	North McDowell Mountains, Scottsdale
Mar 14	Tuesday	6:00 pm–10:00 pm	TBA
Mar 16	Thursday	6:00 pm–10:00 pm	TBA
Mar 18	Saturday	all day	Various times, various places

*North Mountain Park is located at Peoria and 7th St, 5 miles north of Camelback on 7th St. Turn west into the park and look for the orange traffic cones imprinted "AMC" at Havasupai Ramada.

Experience required: None. Even if you have never climbed a tree before, this class is for you.

What is provided by the AMC:

- Technical climbing gear that will be used for the school (and is yours to keep): 1 belay/rappel device, 2 non-locking carabiners, 3 locking carabiners, 4 prusiks, one 5' sling (subject to change)
- Harness and helmet provided free by the AMC for the duration of the class if needed
- Basic climbing textbook
- Instruction through all phases of the class
- Discounts from local retailers on climbing gear

Equipment recommended for the class: You will wear a climbing harness at every class, so dress casually. Most sessions will be held outside, so watch the weather. Climbing shoes are recommended for the weekend sessions only. The AMC rents climbing shoes on a first-come, first-serve basis on the **second** night of class for \$10 for the class. We will discuss what to look for in a shoe on the first night of class.

Paperwork: You will be required to read, fill out and sign an AMC release of liability on the first night of class. Students under 18 must have the release signed by their parent or guardian (no students under 14 please; students 14-15 years of age must be accompanied by an older adult).

Class fee: \$160 plus membership if not already a member (\$30 for an individual and \$35 for a family). Membership is good through Dec., 2006.

Registration: The class is limited to 40 students. To reserve a spot, send a check for \$160 + membership cost (see Class Fee above) made out to AMC Basic School. Include your clearly printed name, address and current phone number(s). Mail to: AMC Basic School, 1025 E. Highland Ave., #26, Phoenix, AZ 85014. No credit cards accepted. If you have further questions, please call Slawa Ciula at 602-265-2661 or email at amcbasic-school@hotmail.com. (Please note: \$75 is a non-refundable deposit; the rest will be returned if you cancel. If someone else can be found to take your place, the entire \$160 will be refunded.)

For more information: Visit the Arizona Mountaineering Club website at www.AzMountaineeringClub.org

AMC's 2006 Officers, Directors

In a not very ferocious contest, the array of perpetrators shown below was elected to office at the AMC Membership Meeting held January 30th at the Washington Adult Center. In fact, elections committee chairman, Dave Van Hook, lamented the fact that it was "no contest" for any of the positions this time.

Left to right — Clay Vollmer, Treasurer; Erik Filsinger, Secretary; John Keedy, President; Jutta Ulich, Past President Board Member; Robert England, Vice-President; two-year Board Member Justin Iske and one-year member Dave Van Hook. Two-year Board Member David McClintic is not shown.



Editor Apologizes

The *Arizona Mountaineer* obviously did not appear when scheduled this time. Sorry, folks. Had a bout that involved hospitals and such — nothing drastic but definitely a monkey wrench in the time line.

Let me renew a request: *Producing* the newsletter is, inescapably, pretty much a one-person job. It will require an apprenticeship of a couple of months and a firm commitment to do the necessary drudgery, of which there is a fair amount.

One will need a computer with a fair amount of memory, cable hookup (or else the task takes forever), and a good printer that will handle 8-1/2 by 14 sheets to close to their edges. I am using Publisher 2000 tho Publisher 97 will work.

If anyone has had experience with reporting, publishing, etc., and would like to devote roughly three days a month (spread over a week's time) to taking on this job, please get in touch with the editor.

Alien Recall

A recall of certain batches of Aliens has been posted at <http://www.rockclimbing.com/topic/104853>. This notice was sent to AMC's electronically, but in case you missed it, check out the address above.

Lead Climbing School — Spring 2006

Arizona Mountaineering Club

This is an advanced climbing class. Even if you don't plan on leading, you will learn much about the dynamics of climbing, and it will make you a safer climber. Protecting a climb is a different skill from climbing itself. We will talk about the dynamics of lead falls, how to prepare for a climb, the differences between single-pitch and multi-pitch, and the differences between clipping bolts and placing natural pro. There will be no "true" lead climbs during the class, but we will provide simulated leading exercises.

Class curriculum:

Tue	Lecture, slide show: introduction, the lead fall, equipment
Wed	Lecture, slide show: equipment (continued); the process and techniques of leading
Thu	Lecture, slide show: multi-pitch techniques, the descent, leader rescue, aid climbing
Sat	Hands-on practice: natural pro placement (Prescott)
Sun	Hands-on practice: leading on bolts (Prescott or Scottsdale)

Class schedule:

Feb 21	Tuesday	6:30 pm–9:30 pm	*Dreamy Draw Park
Feb 22	Wednesday	6:30 pm–9:30 pm	Dreamy Draw Park
Feb 23	Thursday	6:30 pm–9:30 pm	Dreamy Draw Park
Feb 25	Saturday	9:00 am–5:00 pm	Prescott (directions will be in syllabus)
Feb 26	Sunday	9:00 am–5:00 pm	Prescott or Scottsdale (directions will be in syllabus)

*To get to Dreamy Draw Park take SR 51 (Piestewa Peak Parkway) to Northern and turn east. This dead-ends at the Park. We will be at the big ramada next to the parking lot. Directions to the other locations will be given out then.

Experience required: Preferably, AMC Basic School and AMC Anchors School or equivalent experience. This includes knowing how to tie a variety of knots, belay, rappel, prusik and set anchors.

Cost: \$75 plus membership if not already a member (\$30 for an individual and \$35 for a family). Membership is good through Dec., 2005. Register by sending a check payable to AMC Lead School to 1654 W. Boston St, Chandler, AZ, 85224. No credit cards accepted. (Please note: the registration fee is fully refundable if you cancel.) Call Nancy Birdwell at 480-821-1932 or email lead.school@AzMountaineeringClub.org for more information. The number of students will be limited to 30.

Equipment required for the class:

The following will not be needed the first night. You may want to listen to the gear lectures before making purchases.

1. All climbing gear (harness, prusiks, biners, etc.)
2. Helmet—mandatory for all on-rock sessions
3. Specifically needed:
 - 2 20' slings (untied length), preferably different colors
 - 2 10' slings (untied length), preferably different colors
 - Nut pick
 - Quickdraws with biners—at least 5 per person
 - All pro that you own, which may include cams, hexes, wired nuts, Tri-cams, etc.
 - Consider combining with another person to have enough gear
4. Hiking boots or shoes with stiff soles for Saturday, climbing shoes for Sunday
5. Optional: kneepads for Saturday (\$3–6 at Home Depot, \$5 volleyball pads at sporting goods stores)

For more information: Visit the Arizona Mountaineering Club website at www.AzMountaineeringClub.org.

Calendar of Events (Continued from page14)

Group outings are intended to be social climbing experiences with no supervision. They may or may not be organized by an AMC Outing Leader. If they are organized by an AMC Outing Leader, the Leader will only be responsible for organizing the time, date, meeting places, and any necessary camping. The AMC Outing Leader may also set anchors, but will not be responsible for supervising any climbing activity or for monitoring the anchors they set. Participants are responsible for their own climbing activities, their own climbing partners, and for monitoring anchors, whether set by an AMC Outing Leader or not. Participants are also responsible for their own conduct and safety at the campsite and during any approaches to and from the climbing areas. If any AMC equipment is used for the outing, the participants using that equipment are responsible for checking the equipment before use and for using the equipment properly and in the safest manner possible. The campsite, where possible, may be reserved and paid for by the AMC. Parking may be first-come, first-served.

Billboard—Other Scheduled Events

Outings listed in this section are not AMC sanctioned outings. Any AMC member can list an event he or she is planning and which is open to other AMC members. The member does not have to be an approved AMC Outing Leader. If you wish to participate you should be physically and mentally prepared with the appropriate gear and should contact the member planning the outing. You are responsible for your own safety, not the person leading the outing. You should always be aware of the risks involved in outdoor activities and conduct yourself accordingly.

March 4 **Strenuous 11-mile hike along the Superstition ridgeline.** A classic hike for fit, experienced hikers only. Contact Rogil 623-512-8465 at rogil@cox.net before Feb. 25.

Wednesdays North Mountain hikes after work. Rogil Schroeter (623) 512-8465

Commercially Provided Training and Events

The events listed below are provided by commercial outfitters for the benefit of AMC members. They are not AMC Outings, nor are they led by AMC Outing Leaders, though they may be open only to AMC members. The commercial outfitter is solely responsible for all aspects of the outing, not AMC. While, in most cases, an AMC member may provide a service by AMC collecting the names of prospective participants and handling the logistics of out-of-town events, participants will sign up directly with the commercial outfitter.

March 11-12 **Advanced Ice: Multipitch Climbing.** Offered by Southwest Adventures. Day of review and instruction and then a day of a classic backcountry multipitch ice climb near Silverton or Ouray. Must have prior ice climbing experience. The course cost would be \$345 per person, and would have a 2 person minimum. Client to guide ratio would be 2:1 max. For more information and to sign-up, contact Erik Filsinger at _smorefil@aol_ ([mip://036036b8/smorefil@aol.com](http://036036b8/smorefil@aol.com))

Zen-Lizard Systems Presents

X-Chalk

The world's first rock climbing chalk that soothes hot and ripped up fingers -- as you climb! Also helps heal cuts and scratches. All natural -- no chemicals. Available at the Phoenix Rock Gym, Climbmax, the Arizona Hiking Shack, and online at:

<http://www.zen-lizard.com>



Calendar of Events

AMC Outings

Please note: It is suggested that Outing participants donate gas money to the Outing Leader, and that car-poolers share the cost of gas for the driver. See footnotes below for other info about outings.

- Feb 12 **The Monk.** AMC half-day classic (5.3 --5.7 depending on start) Robert England, 480-688-5412
- Feb 19 **Zonerland** in the Superstitions. (5.9—5.11 range) Great rock in a little-climbed area. Limit 12. Frank Vers 480-947-9435
- Feb 21 **Lead School.** Feb. 21,22,23,25,26 — See page 5
- Mar 1 **Basic School Instructor Meeting.**
- Mar 7,9,11,12,14,16,18 **Basic School** — See page 7.
- Mar 25 **Queen Creek Cleanup and Climb.** Come clean up a stretch of highway 60 at Oakflat and then Climb,(climbs vary from easy 5.6-5.11). Meet at 8.00 am. To carpool at Mesa Community College South West most parking lot, Scott Hoffman-Outing leader. Any Q's call him (623)694-8078 or arrive at 9.00 am at Oak Flat road turn off- Tiina and John Perlman (the" trash leaders" will wait you there with trash bags). Bring gloves. No limit-Everyone Welcome!
- Mar 29 **Anchors School Instructor Meeting.**
- Apr 04 **Anchors School.** Apr. 4,6,8,9

Footnotes: Car-pooling is optional on all outings and is not part of the outing. The outing begins at the trailhead designated by the Outing Leader and ends at the same place. Each participant should bring a First Aid kit. If you leave the outing, with or without the leader's permission, you are considered to be on your own until you rejoin the group. Each participant will be required to sign an AMC Activity Release Form at the beginning of the outing. Participation in AMC outings requires club membership. Outings vary in degree of danger. When you participate in an outing you should be both physically and mentally prepared and equipped with the appropriate gear. You should always be aware of the risks involved in outdoor activities and conduct yourselves accordingly. The Outing Leader is not responsible for your safety; you are. Please contact the Outing Leader before going on an outing, discussing your capabilities with the Outing Leader. You must be over 18 years of age to participate, or must be accompanied by a parent or responsible adult, and obtain prior consent from the Outing Leader. Those accompanying minors are responsible for the minor's safety.

(Calendar continued on page 13)

Outing Leaders

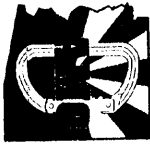
Requirements for becoming a leader: take the Basic, Anchors and Lead classes (or equivalents), be a member for at least one year, complete a basic first aid and CPR class (8 hours or more), and be approved for leadership by at least five current leaders through formal application process and by the Board of Directors. Contact Nancy Birdwell at (480) 821-1932.

Robert England	480-688-5412	Tim Lange.....	480-598-9124	Chris Query	602-323-5927
Erik Filsinger	602-906-1186	David Larimer	480-425-9689	Tim Schneider.....	480-497-8377
Scott Hoffman	623-580-8909	Sally Borg Larimer ...	480-425-9689	Rogil Schroeter	623-512-8465
Richard Horst	623-434-4769	Tim Medlock.....	480-963-3496	Jef Sloat.....	602-316-1899
David Johnson.....	623-486-7387	Monica Miller.....	623-362-0456	Mick Strole.....	520-856-3335
John Keedy	623-412-1452	Paul Norberg	602-808-9244	Frank Vers.....	480-947-9435
Mike Knarzer	602-751-1701	Paul Paonessa.....	602-493-7356	Tim Ward	602-212-1929

FEBRUARY 2006

AMC Outing Calendar

Sun	Mon	Tue	Wed	Thu	Fri	Sat
			1 Sunrise 7:24 Sunset 6:00 M-set 9:56p	2	3	4 1st Qtr
5	6	7	8 Sunrise 7:19 Sunset 6:07 M-rise 2:00p	9	10	11
12 The Monk Full Moon	13 AMC Board	14	15 Sunrise 7:12 Sunset 6:13 M-rise 8:41p	16	17	18
19 Zonerland	20	21 Lead School eve Last Qtr	22 Lead School eve Sunrise 7:05 Sunset 6:19 M-set 12:20p	23 Lead School eve	24	25 Lead School — Queen Cr. Clean & Climb
26 Lead School	27 Memb. Mtg/ Pnx Library Libeck Show	28		<div style="border: 1px solid black; padding: 5px;"> <p>NOTE Celestial events occur about 10 minutes earlier on Arizona's eastern border; 10 later on its western edge.</p> </div>		



Arizona Mountaineering Club
4340 E. Indian School. Ste.21-164
Phoenix, AZ. 85018